

**PROVISIONAL SPECIES VOUCHER SHEET****Provisional Name:** *Chaetozone* "setosa" sp SD 2**Taxon:** Annelida, Cirratulidae**Taxonomist:** R. Rowe**Date:** 1 Dec. 1996**Authority:****Common Synonyms:**formerly identified as *Chaetozone* "setosa"**Specimen(s):**

STATION	DATE	DEPTH	STORAGE LOCATION	VIAL #
I-3 rep.1	1Jul96	85 ft.	RCR pers. coll.	(2 specmns)
I-2 rep.2	1Jul96	108 ft.	RCR pers. coll.	(1 specmn)
I-16 rep.1	2Jul96	93 ft.	RCR pers. coll.	(1 specmn)

ITP

**Characters:**

Neuropodial spines begin on setiger 70-95.

Notopodial spines begin on ~setiger 140.

Spines on posterior segments in reduced cinctures with broad dorsal and ventral gaps. The lateral gap narrows, but continues to posterior end.

Posterior spines are blunt and most are slightly curved. Spines in the last few posterior setigers are more strongly hooked terminally.

10-12 spines per side maximally, alternating with capillaries.

Dorsal tentacles inserted on last peristomial annulation.

First branchiae inserted lateral to dorsal tentacles.

Eyes absent.

Prostomium pointed, fused to the peristomium which is formed of three weak and one distinct annulations.

Strong midventral furrough (especially anteriorly).

Methyl green stain:

--prostomium stains intensely except anterior tip

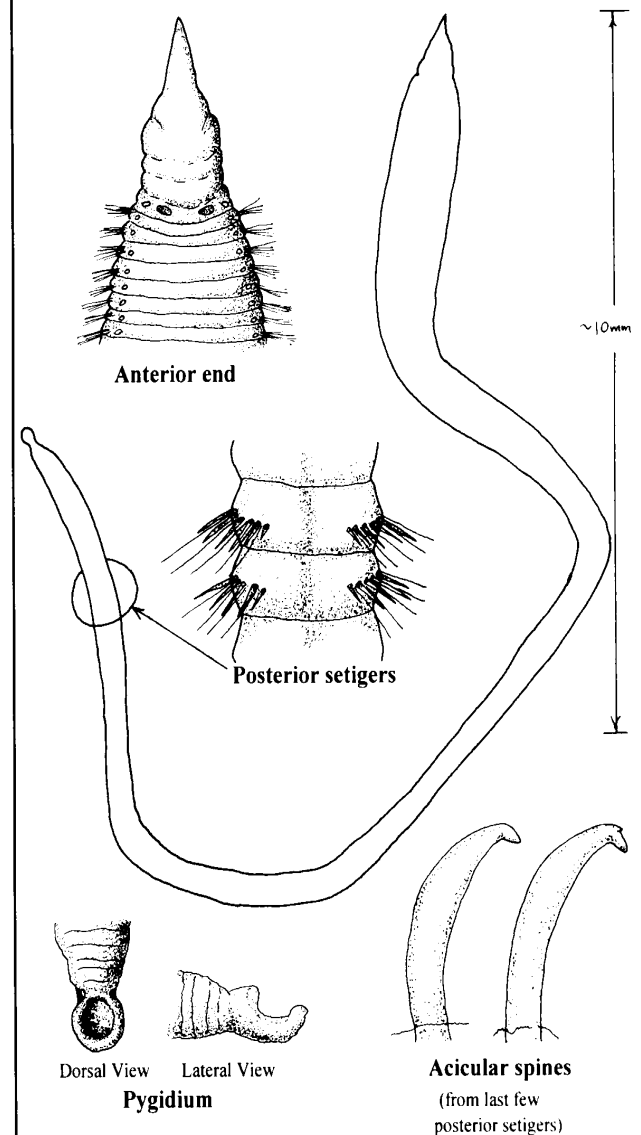
--peristomium does not stain

--setal fascicles of anterior setigers stains moderately

--midventral furrough stains with pale speckling anteriorly

**Illustrations:** All views dorsal

(unless labeled otherwise)

**Related Species & Other Comments:**See the table of *Chaetozone* spp summarizing the characters of species reported by Blake, 1996 and of provisional species from City of San Diego collections.**References:** Blake, J.A. 1996. Family Cirratulidae. In: Taxonomic Atlas of the Benthic Fauna of the Santa Maria Basin and Western Santa Barbara Channel. Volume 6 The Annelida Part 3 - Polychaeta: Orbiniidae to Cossuridae pp.263-384.