

VOUCHER SHEET

Aglaophamus verrilli (McIntosh, 1885)
~~Hartman, 1950~~

Nephtyidae

Date Examined and Code: AHF 9 ; NOVEMBER 8, 1982

Keys Used: Hartman, O. 1968 (Atlas) p. 567

Other Literature: Hartman, O. 1950. p. 122

Important Characters: Interramal cirri are involute, not recurved (Fig. 1), begin on setiger 5-6; pigmentation absent except for pair of eyes at posterior margin of prostomium.

Related Species and Character Differences: Aglaophamus erectens HARTMAN, 1950 — interramal cirri begin on setiger 9-11.

Aids to Identification: Interramal cirri are involute, not recurved.

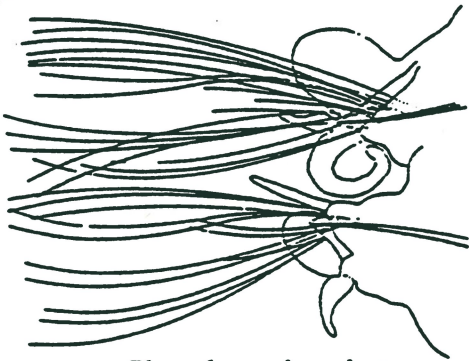


Fig. 1 a. involute
 (Hartman, O. 1968.
 p. 567)



Fig. 1 b. recurved
 (Hartman, O. 1968
 p. 579)