



City and County of San Francisco Voucher Sheet

Voucher #: P340

Taxa: Polychaeta: Nephtyidae

Original Prep.Date: 28 June 1999

Prepared By: Dot Norris

Species Code: Nep_californien

Species: *Nephtys californiensis*

Authority: Hartman, 1938

Common Synonyms:

Characters:

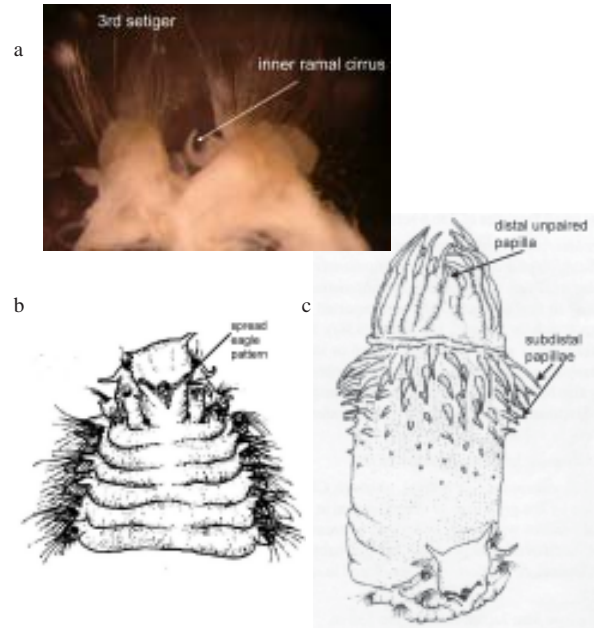
- Inner ramal cirri begin on setiger 3 (a)
- Anterior end unpigmented except sometimes with 'spread eagle' pattern on posterior of head (b).
- Proboscis without a subdistal unpaired cirrus, but with a distal unpaired cirrus (c). There are 22 rows of subdistal papillae with 5 to 8 per row.
- No apparent Methyl Green staining pattern

Additional Information:

Habitat: sandy beaches to 330 m depth (Hilbig, 1997)

Distribution: Mexico to California, Yellow Sea and Japan (Hilbig, 1997).

Illustrations:



a photographed specimen #2 by Dot Norris

b and c from Hilbig, 1997

Similar Species:

Nephtys caecoides - Inner ramal cirri begin on setiger 4, proboscis with a subdistal unpaired papilla

Nephtys ferruginea - subdistal unpaired papilla present, middorsal distal papilla absent (see *N. ferruginea* voucher sheet), ribbed pigment pattern on dorsum, and methyl green stains around the mouth.

Comments:

We get all three species (*N. ferruginea*, *N. caecoides* and *N. californiensis*). Unpigmented specimens with inner ramal cirri starting on setiger 3 should be examined for proboscoidal papillae arrangement or methyl green stain.

Nephtys californiensis (continued)

References:

- Banse K., Hobson K. D., 1974. Benthic Errantiate Polychaetes of British Columbia and Washington. *Bull. Fish. Res. Bd. Canada* 185:111.
- Blake J. A., 1975. Phylum Annelida: Class Polychaeta. in: Smith R. I., Carlton J. T., eds. *Light's Manual: Intertidal Invertebrates of the Central California Coast*. 3rd ed. Berkeley, CA.: University of California Press. pp. 716.
- Hartman O., 1968. Atlas of the Errantiate Polychaetous Annelids from California. Los Angeles California: Allan Hancock Foundation, USC. pp. 828.
- Hilbig B., 1997. Family Nephtyidae Grube, 1850. in: Blake J. A., Hilbig B., Scott P., ed. *Taxonomic Atlas of the Benthic Fauna of the Santa Maria Basin and the Western Santa Barbara Channel*. revised ed. Volume 4 - The Annelida Part 1. Santa Barbara: Santa Barbara Museum of Natural History. pp. 317-49.
- Lovell L., 1997. A review of six species of *Nephtys* (Cuvier, 1817) (Nephtyidae: Polychaeta) described from the eastern Pacific. *Bulletin of Marine Science* 60(2):350-63.

Voucher Specimens

Vial Number	Sample Number	Station	Sample Date	Number of Specimens	Comments
1	SWOOA022	SWOO46	17 Sep 1997	1	SM, large specimen, anterior damaged
2	0309112588	SWOO43	12 Sep 2003	1	CLB/DJN, large specimen, good condition

Revision History:

DATE	TAXONOMIST	COMMENTS
13 Feb 2007	DJN	Transfer information into PageMaker format, add image and update information