

Key to the Oweniidae of San Diego

by R. Rowe; revised by S. Douglass May, 2002

additional text added by K. Barwick 11NOV2017

- 1.a.** Anterior terminus a branched branchial crown with a membranous collar surrounding its base (Fig. 1). Methyl green staining pattern: Entire body covered with speckles, concentrated mostly in thoracic region (Fig. 6).....*Owenia collaris*
- 1.b.** Anterior terminus a bilobed prostomium and a larger, bulbous peristome. Two large, long, grooved palps attached at the dorso-anterior edge of the peristome (Fig. 2). Methyl green staining pattern: Prostomium and peristomium stain uniformly, with no pattern; from setiger 1, segments with numerous distinct speckles distributed over entire surface (Fig. 7).....*Myriowenia californiensis*
- 1.c.** Anterior terminus with a flange and oral opening, but without additional structures. Terminus rounded or truncate.....2

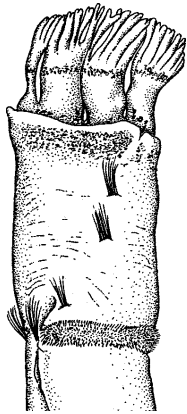


Fig. 1 *Owenia collaris*
Anterior end, lateral view
(from Blake, 2000)

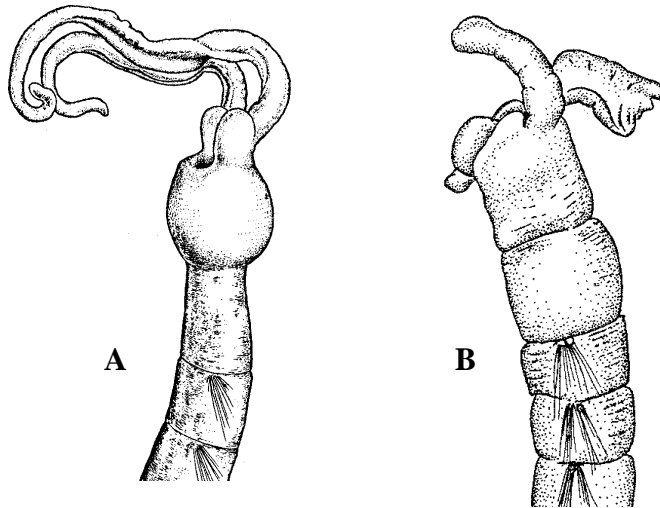


Fig. 2 *Myriowenia californiensis*: **A.** anterior end, lateral view.
B. anterior end, lateral view (from Blake, 2000)

- 2.a.** Anterior margin truncate, squared to lateral margins when viewed ventrally. The first four notosetal fascicles in an evenly spaced series. The fifth and subsequent notosetal fascicles on more prolonged segments (Fig. 3A). Pygidium petaloid with seven to nine lobes (Fig. 3B and Fig. 8). Methyl green staining pattern: see Fig. 9.
.....*Galathowenia pygidialis* [= *Myriochele pygidialis*]
- 2.b.** Anterior margin rounded.....3

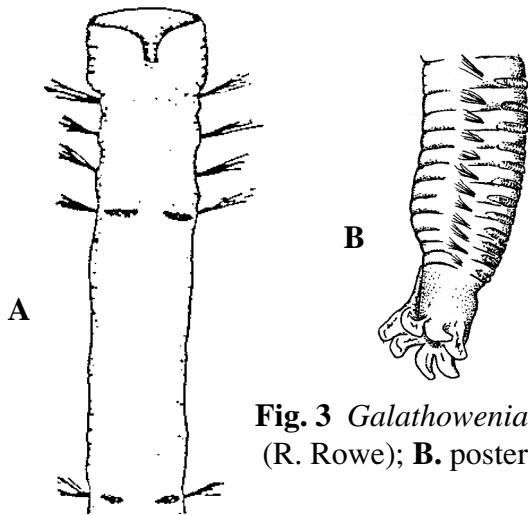


Fig. 3 *Galathowenia pygidialis*: **A.** Anterior end ventral view (R. Rowe); **B.** posterior end, lateral view (from Blake, 2000)

3.a. First two notosetal fascicles proximal, on shortened segments, the following setigers more elongate (Fig. 4). Eyes usually present (minute, red). Tube with randomly arranged grain pattern. Methyl green staining pattern: Diagonal band on lateral side of cephalic groove separating head from thorax (Fig. 10).....*Myriochele striolata* [= *M sp. M*]

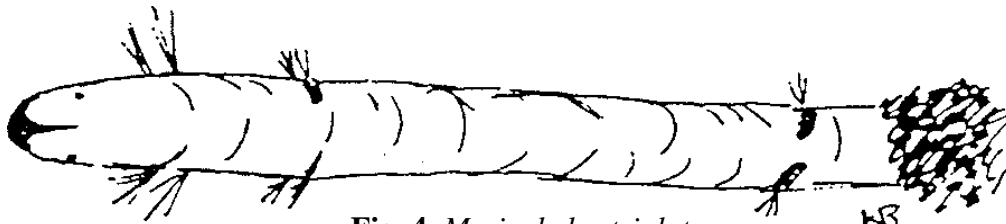


Fig. 4 *Myriochele striolata* (K. Barwick)

3.b. First three (or four) notosetal fascicles proximal, on shortened setigers, the following setigers more elongate. No eye spots. Tube with grains arranged in a pattern diagonal to tube axis (Fig. 5). Methyl green staining pattern: Midventral line of stain extending posteriorly from mouth to level of setiger 1 (Fig. 11).....*Myriochele gracilis*
 First three setigers uniramous

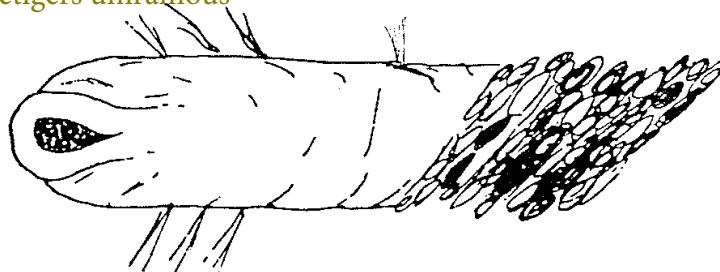


Fig. 5 *Myriochele gracilis* (adapted from M. Kelly)

3.c. First two setigers uniramous.....*Myriochele olgae*

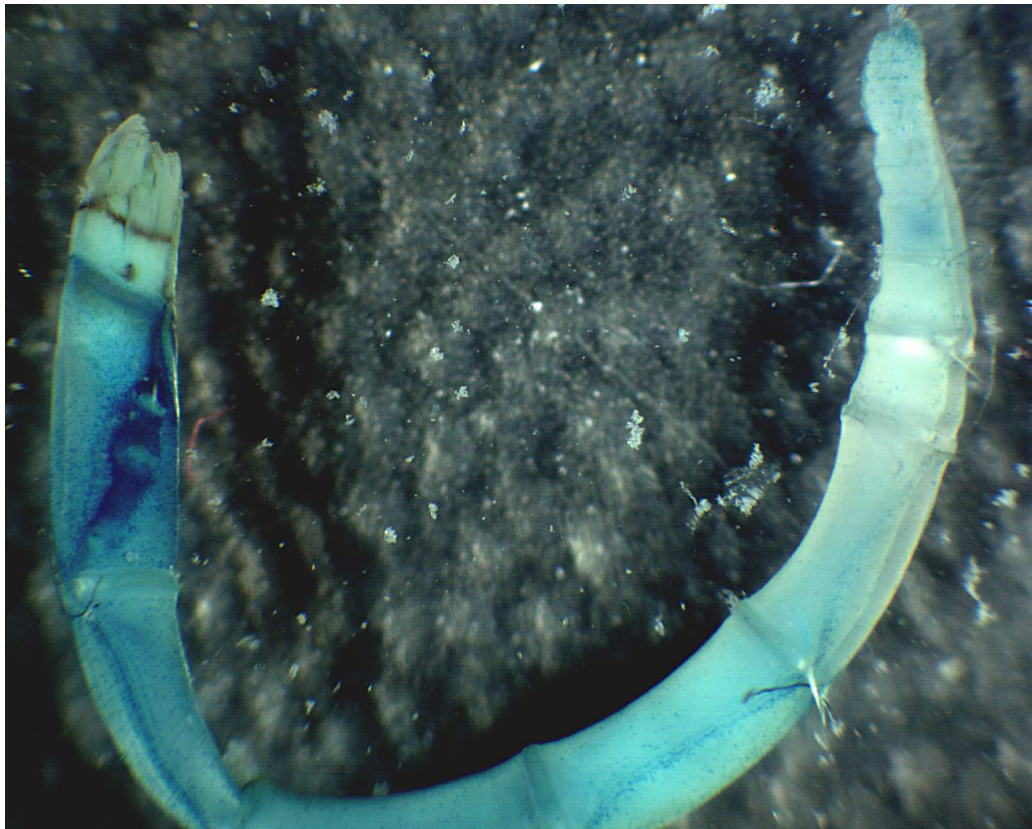


Fig. 6 *Owenia collaris*, lateral view, stained with methyl green. Sta 17930, 7/26/1994, 23m
Image by S. Douglass

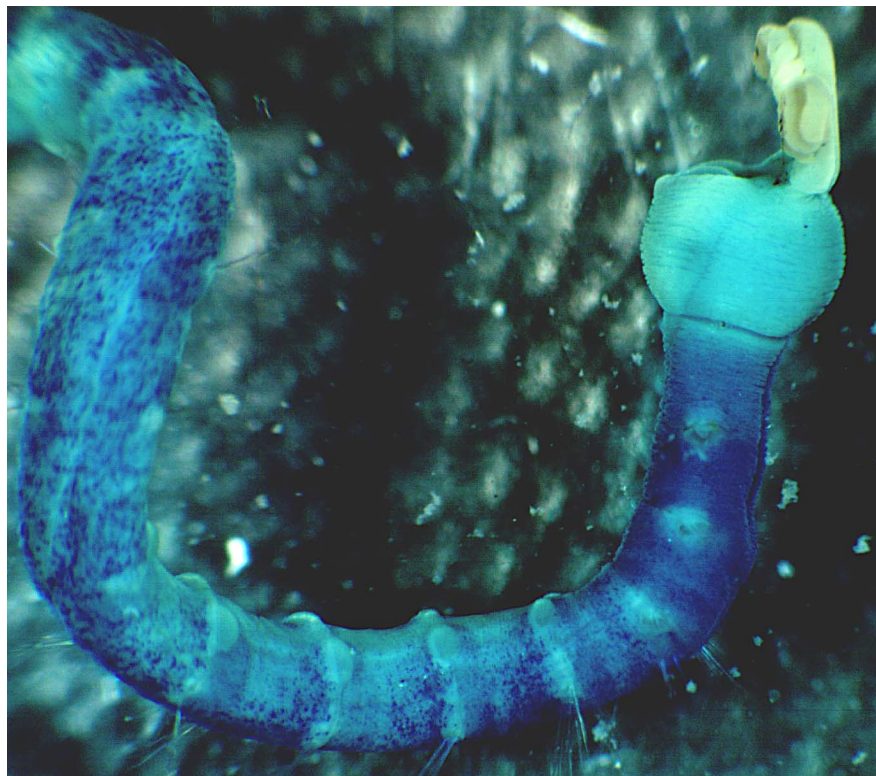


Fig. 7 *Myriowenia californiensis*, lateral view, stained with methyl green
Station data unknown. Image by S. Douglass



Fig. 8 *Galathowenia pygidialis* posterior end, stained with methyl green. Sta 2691(2), 7/25/2000, 210 ft.
Image by S. Douglass



Fig. 9 *Galathowenia pygidialis* anterior end, lateral view, stained with methyl green. Sta 2691(2), 7/25/2000, 210 ft. Image by S. Douglass



Fig. 10 *Myriochele striolata* anterior end, lateral view, stained with methyl green. Sta 2696(1), 7/25/2000, 310 ft. Image by S. Douglass



Fig. 11 *Myriochele gracilis* anterior end, lateral view, stained with methyl green. Sta E9(1), 4/4/2002, 381 ft. Image by S. Douglass

