

Date Reviewed: March 1996

Voucher Sheet: T. Parker

Synonymy: *Owenia collaris* Hartman 1955
Owenia fusiformis collaris Hartman 1955

Literature: Dauvin, J.C., E. Thiebaut. 1994. Is *Owenia fusiformis* Delle Chiaje a cosmopolitan species? In: J. C. Dauvin, L. Laubier, D. J. Reish (eds.). Actes de la 4eme Conference Internationale des Polychaetes. Mem. Mus. natn. Hist. nat. 162:383-404. Paris.

Diagnostic Characters: (see Figures 1, 2, 3, & 4)

1. Anterior end with branchial lobes that increase in complexity with age and become a highly branched tentacular crown. Crown often with bands of brown pigment.
2. Small specimens and juveniles have a slightly produced collar that often requires close inspection or manipulation with a fine probe to view. Larger or more mature specimens have a clearly visible collar.
3. Latero-ventral eyespots commonly are seen at base of crown near collar in most specimens. These spots may be absent or diminished in size and density. In many specimens these eyespots appear as small round concentrations of pigment.

Comments:

Differences between tube structure is likely related to the specimen's habitat and is not a taxonomic character. Uncinal characteristics such as tooth arrangement and shoulder prominence have been observed with SEM techniques. Though some slight differences can be detected, they are not diagnostic of a species concept. There are no morphological conditions which justify a separation between *O. collaris* and *O. fusiformis*. *O. collaris* is a junior synonym of *O. fusiformis*.

Distribution: Cosmopolitan, abundant in shallow waters (0-40 meters). Also recorded to 2,325 meters.

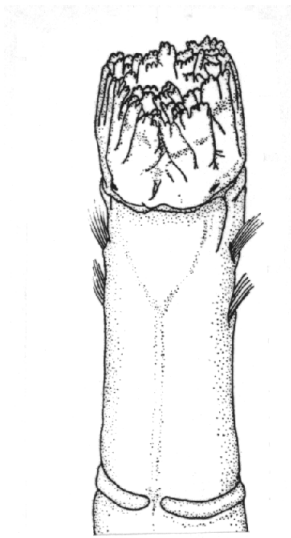


Figure 1. ventral
(Imagima & Morita 1987)

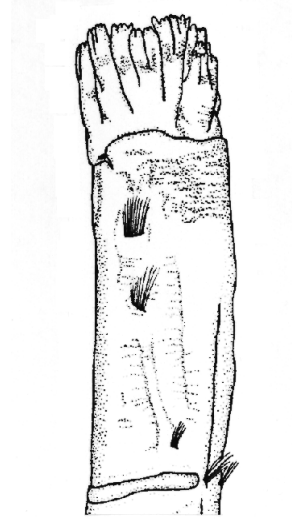


Figure 2. lateral
(Imagima & Morita 1987)

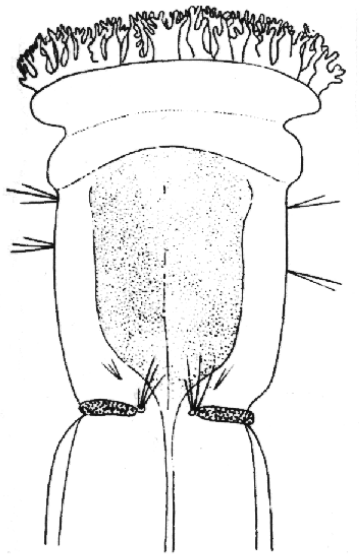


Figure 3. dorsum
(Hartman 1969)

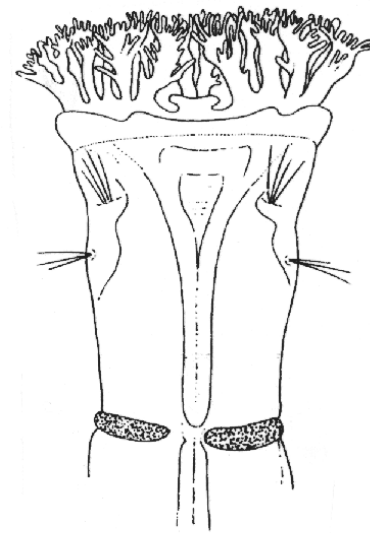


Figure 4. ventrum
(Hartman 1969)