



# City and County of San Francisco Voucher Sheet

Species: *Magelona sacculata*

Authority: Hartman, 1961

Common Synonyms:

Voucher #: P735

Taxa: Polychaeta: Magelonidae

Original Prep.Date: 10 Aug 2004

Prepared By: S. McCormick and D. Norris

Species Code: MAG\_SACCULATA

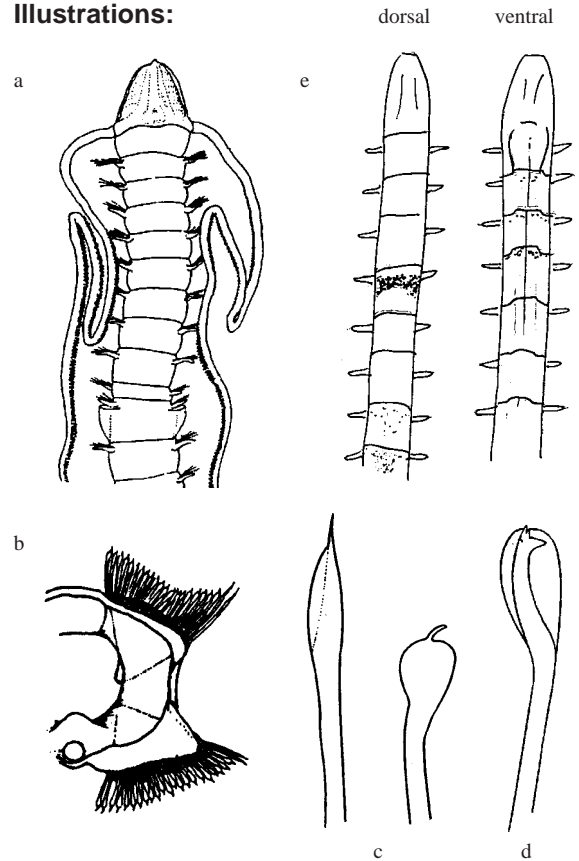
## Voucher Information

SAMPLE NUMBER	STATION	SAMPLE DATE	NUMBER OF SPECIMENS	COMMENTS/NOTES
SWOOA105	34	20 SEP 1999	2	PRM, fragments
BSNTB002		JUN 1982	1	whole, 40 mm. in length
BSSWE189	28	16 OCT 1992	1	KL, whole, 15 mm. in length
BSSWE201	06	26 AUG 1993	3	whole, dyed with Rose Bengal

### Characters:

- Color in life, ivory with paired, lavender spots dorsally; color in alcohol tan
- Prostomium rounded in front, slightly longer than wide or as long as wide, lacking frontal horns (a)
- Parapodium 9 without ventral medial lobe (b); 9th setiger setae of two types: limbate and mucronate (c)
- Parapodia 1-8 with 1 or 2 lateral lamellae; setae long, thin, bilimbate
- Lateral pouches between setigers 10 and 11
- Hooded hooks of posterior region with tridentate tips (d)
- Methyl green staining pattern: minimal lateral staining; pouches do not stain; a band on 4th setiger, which is not present on juveniles (e)

### Illustrations:



a-d from Blake (1996)  
e Illustrations by DJN

### Additional Information:

SIZE: Length 20 - 30 mm; width 0.7 - 1.5 mm (Blake 1996)

DISTRIBUTION: Central and southern California (Blake 1996)

HABITAT: 10 - 50 m in silt or fine sand (Blake 1996)

### Similar Species:

This species may be distinguished from all other central California *Magelona* by the presence of lateral pouches between setigers 10 and 11. Use staining patterns on adult specimens with fewer than 10 setigers to distinguish this species from other *Magelona*.

***Magelona sacculata*** (continued)

**Comments:**

Staining pattern described for this species by Blake (1996) does not include the dorsal band on the 4th setiger found in our mature specimens.

Unique crescent-shape Rose Bengal stain pattern on setigers 1 thru 9.

**References:**

Blake, J.A., 1996. Family Magelonidae Cunningham and Ramage, 1888, in *Taxonomic Atlas of the Benthic Fauna of the Santa Maria Basin and Western Santa Barbara Channel*; eds.: J.A. Blake, B. Hilbig, and P. Scott. Santa Barbara, California: Santa Barbara Museum of Natural History, vol. 6, 253-262 pp.

Hartman, O., 1969. *Atlas of the Sedentariate Polychaetous Annelids from California*: Los Angeles, California, Allen Hancock Foundation, USC, 812 pp.

Hobson, K.D., and Banse, K., 1981. Sedentariate and archiannelid polychaetes of British Columbia and Washington: Canadian Bulletin of Fisheries and Aquatic Sciences, v. 209, pp. 145.

**Revision History:**