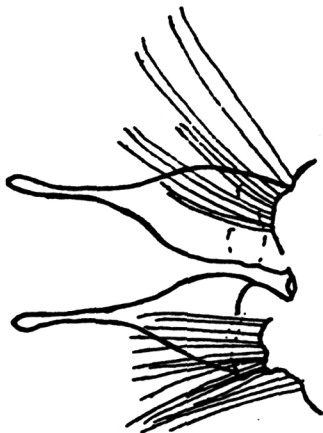
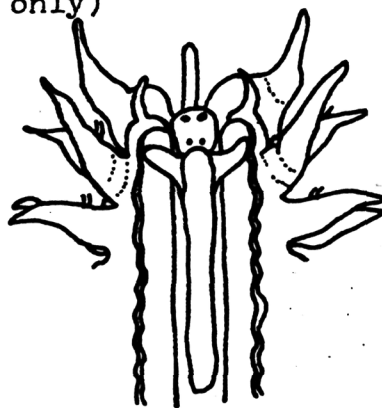


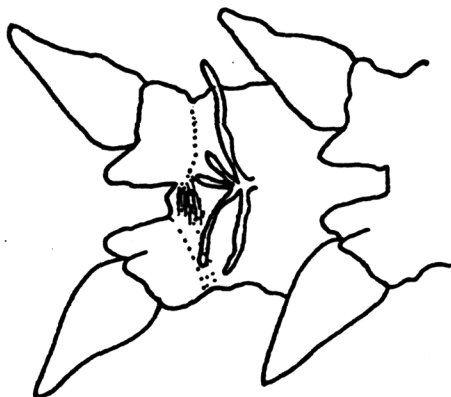
pilose      plumose      spinose      spine with tuft  
 (P. johnsoni only)      heavy spines (setiger 2-3 only)



flask cirri (setiger 7-13 only)\*



anterior dorsal view of generalized Poecilochaetus\*



25th parapodium of Poecilochaetus sp A showing branchia posterior to the parapodium

**BRANCHIAE IF PRESENT ARE POST-PARAPODIAL AND PARTIALLY RETRACTILE**

**Poecilochaetus sp. A .... BRANCHIAE PRESENT AFTER SETIGER 14**

**Poecilochaetus johnsoni.... NO BRANCHIAE**

**Poecilochaetus sp. .... LESS THAN 14 SETIGERS**

\* Taken from: Hartman, O. 1939. Allan Hancock Pac. Exped., 7(2): 159-171.