

Lanice "conchilega" (Pallas, 1766)
Terebellidae

Vol. 4, No. 11

SCAMIT Code: LACO 63

Date Examined: November 12, 1985
Voucher by: Susan Williams (AHF)

LITERATURE: Hartman, 1969

DIAGNOSTIC CHARACTERISTICS:

1. Thoracic setigers 17, including 16 uncingers; uncini in double rows in last 10 thoracic segments.
2. Conspicuous lateral lappets on segments 2 and 4, the first very large.
3. Branchiae 3 pairs, each with a thick basal stalk and distally branched.
4. Tesselated top of tube; tube decorated with sand grains.

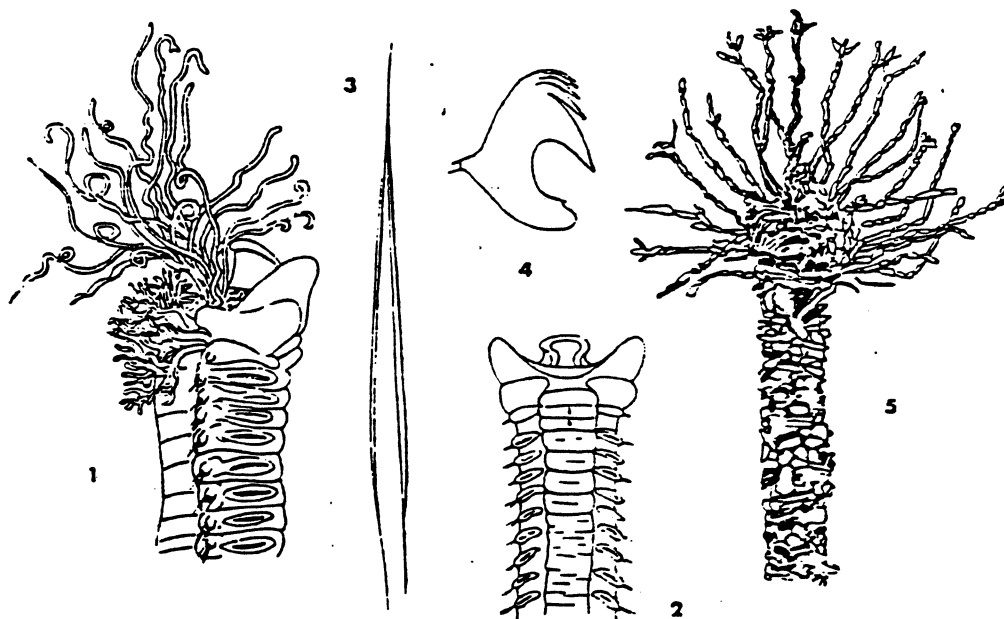
RELATED SPECIES AND DIFFERENCES:

Only species of Lanice reported from western North America.

REMARKS:

1. Lanice superficially resembles Loimia and Pista elongata, as all have similar lappet morphology and three pairs of branched gills.
2. Lanice conchilega has been reported from a broad geographic range and probably represents a species complex that has yet to be worked out.

DISTRIBUTION: California, intertidal to shelf depths; North Atlantic, etc.



Figures from Hartman, 1969.