
SCAMIT Code: MBC 38

Date Examined: November 12, 1985

Voucher by: Susan Williams (AHF)

LITERATURE: Hobson & Banse, 1981
Imajima & Hartman, 1964
Okuda & Yamada, 1954
Uschakov, 1955

DIAGNOSTIC CHARACTERISTICS:

1. Thoracic setigers 17; about 40 abdominal segments
2. Notosetae not obviously dentate; but under oil immersion striations appear, giving a "fuzzy" look.
3. Uncini from setiger 2; in double rows in posterior thorax, the toothed edges facing each other (Fig. 1).
4. Branchiae two pairs, with short stems and short, wide terminal tufts.

RELATED SPECIES AND DIFFERENCES:

Nicolea zostericola: thoracic setigers 15

Nicolea chilensis: thoracic setigers 18

Nicolea gracilibranchis: branchiae with elongate stems (see illustration); differences in uncinal dental formulae and morphology of nephridial papillae.

REMARKS: This species will key to Scionides in Hartman's Atlas, but it differs in number of branchiae (3 vs. 2) and other features (Banse, 1980).

DISTRIBUTION: Central and southern California; shelf depths.

Fig. 1 from Hobson & Banse
1981



Polychaetous Annelids from Mutsushima Bay

Okuda & Yamada, 1954

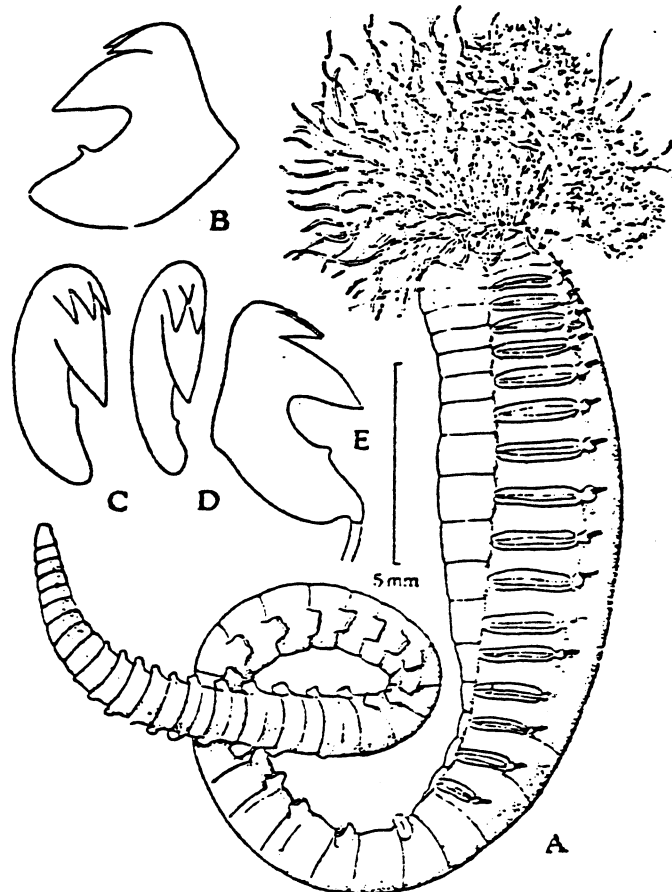


Fig. 9. *Nicolea gracilibranchis* Grube. A. Lateral view of entire body; B. Uncini from thoracic segments; C E, Uncini from abdominal segments.