

SCAMIT CODE: PL 27

Date Examined: September 19, 1983

Synonymy:

Aricidea (Acesta) simplex Strelzov, 1973; Aricidea suecica
simplex Day, 1963a; Aricidea uschakowi Levenstein, 1966.

Literature Cited: (refer to Vol. 2, No. 6)
Lovell, 1977; Strelzov, 1973; Fauchald, 1977.

Diagnostic Characters:

Median antenna short, club-shaped not extending past prostomium (fig. 1); 12-24 pairs short branchiae; abdominal neuropodial modified setae thick distally recurved alternating with longer capillary setae (fig. 2).

Related Species and Character Differences:

Acesta simplex differs from other west coast Acesta by the shape and arrangement of the modified setae.

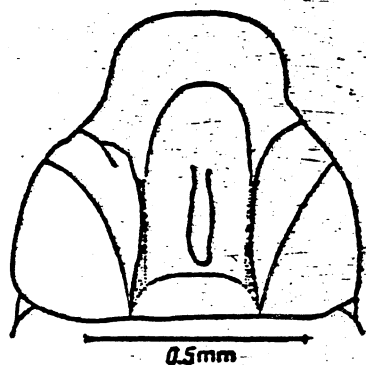


fig. 1
Strelzov, 1973

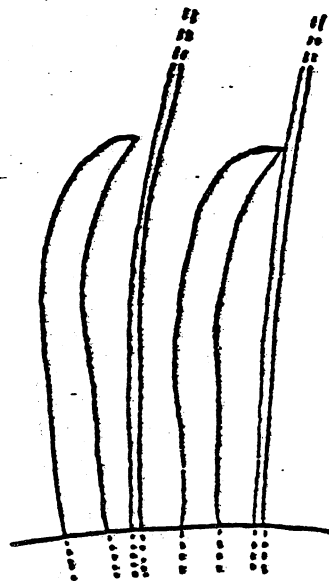


fig. 2
Lovell, 1977

