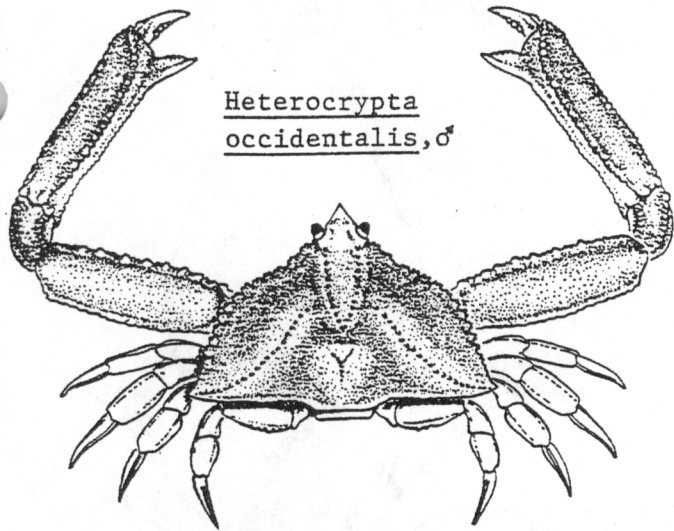
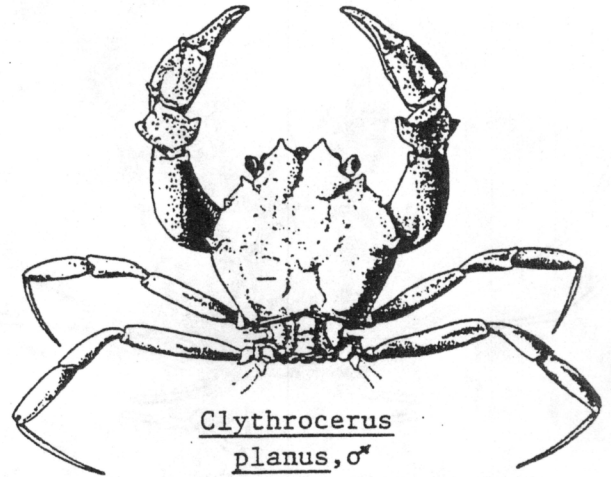


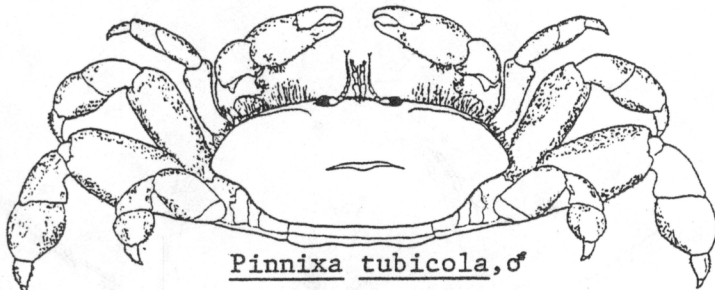
Phylum Arthropoda: Class Crustacea: Section Brachyura
(Figures from Allen, 1977; Hart, 1982; Schmitt, 1921)



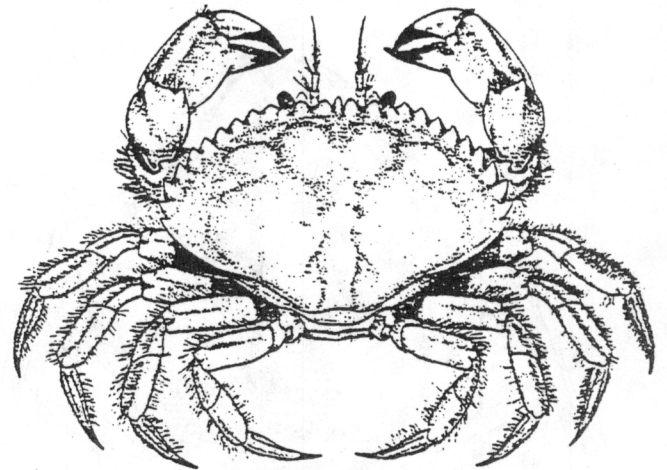
Heterocrypta
occidentalis, ♂



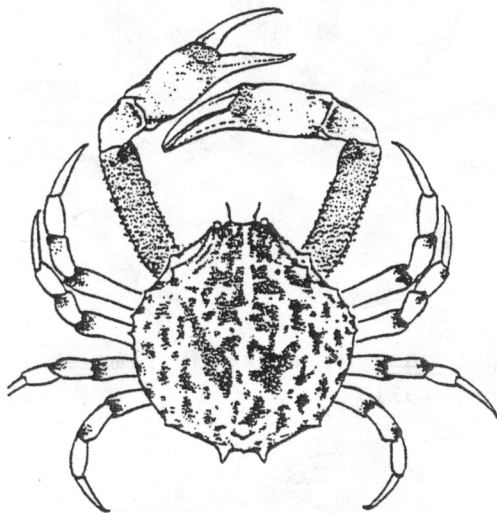
Clythrocerus
planus, ♂



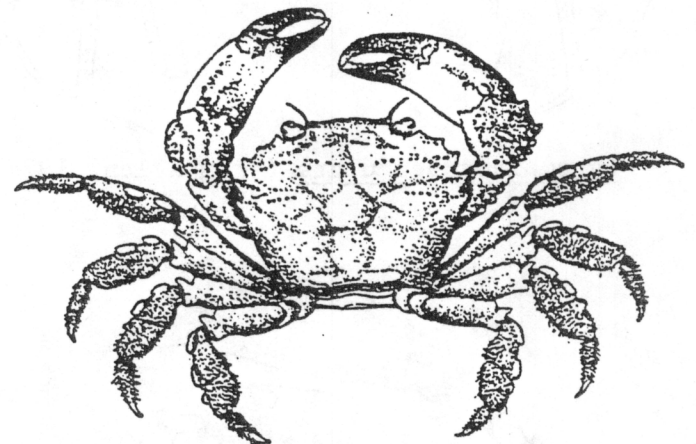
Pinnixa tubicola, ♂



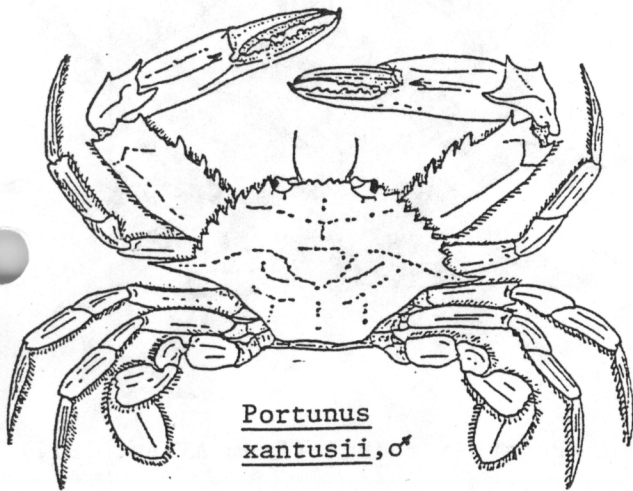
Cancer antennarius



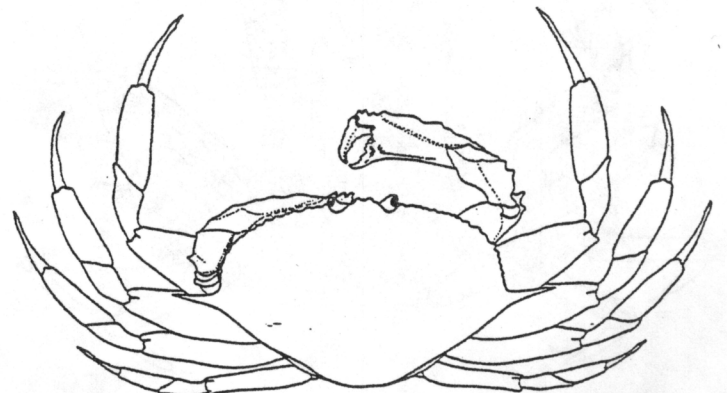
Randallia ornata



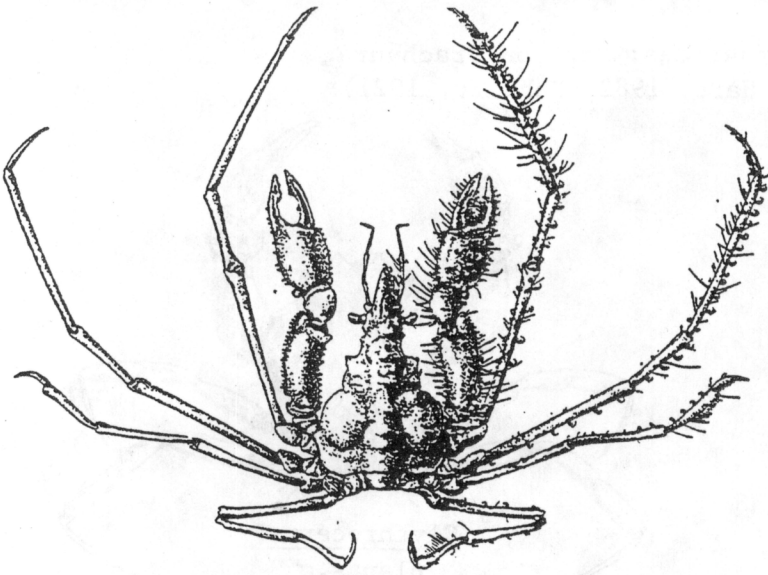
Lophopanopeus diegensis, ♂



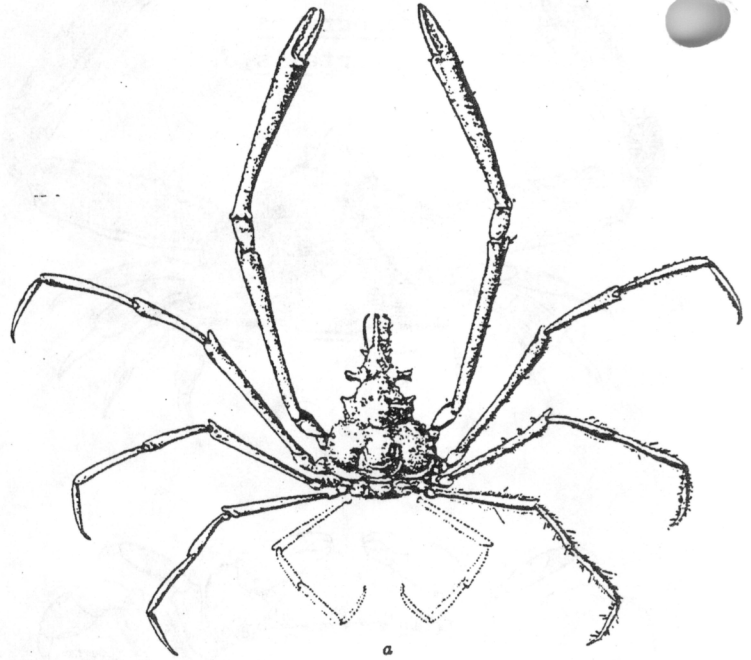
Portunus
xantusii, ♂



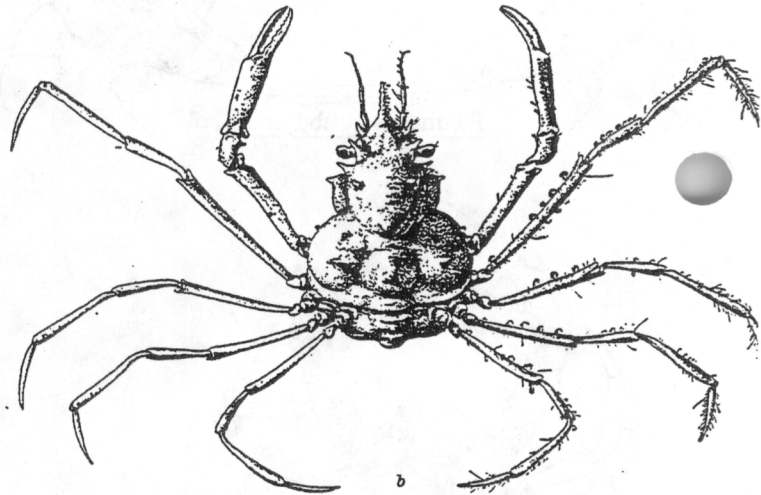
Mursia gaudichaudii (after Milne Edwards and Lucas).



Podocheila hemphillii, ♂ (from Schmitt, 1921)

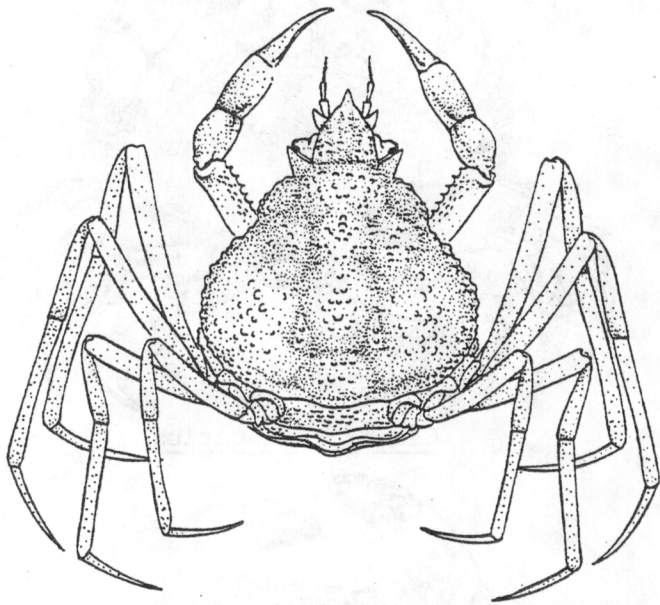


a

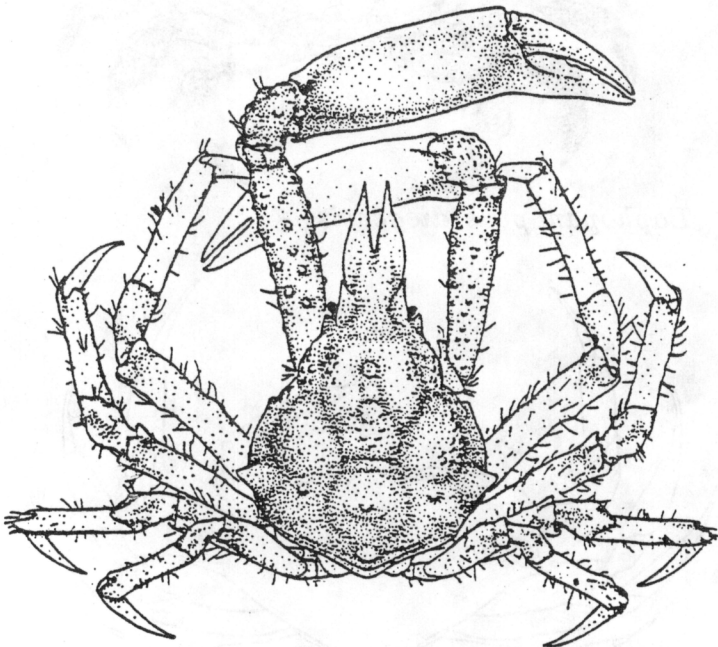


b

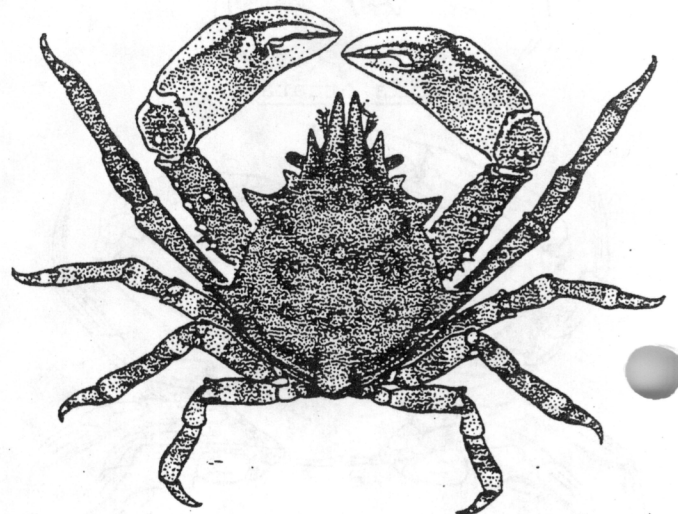
Erileptus spinosus: a, male; b, female
(from Schmitt, 1921)



Pyromaia tuberculata (from Allen, 1977)



Scyra acutifrons (from Allen, 1977)



Pugettia richii (from Allen, 1977)