

SCAMIT Code: HYP64

Date Examined: August 11, 1986
Voucher By: Ann Martin

SYNONYMY: Podochela barbarensis Rathbun, 1924

LITERATURE: Garth, J.S. 1958. Brachyura of the Pacific Coast of America Oxyrhyncha. Allan Hancock Pac. Exped. Vol. 21 Part 1 and 2.

DIAGNOSTIC CHARACTERISTICS:

1. Carapace flattened with two medial tubercles and poorly developed cardiac tubercles (Fig. 1).
2. Postorbital spine small, sometimes more readily visible from the ventral side.
3. Distinct hepatic spine, broadly strap-shaped.
- ✓ 4. First abdominal segment with two median tubercles.
5. Male first right pleopod as illustrated (Fig. 2).

RELATED SPECIES AND CHARACTER DIFFERENCES:

1. Podochela hemphilli does not have a strap-shaped hepatic spine and has one tubercle on the first abdominal segment.

DEPTH RANGE: Intertidal to 220m

DISTRIBUTION: Gulf of California to Pt. Mugu, California

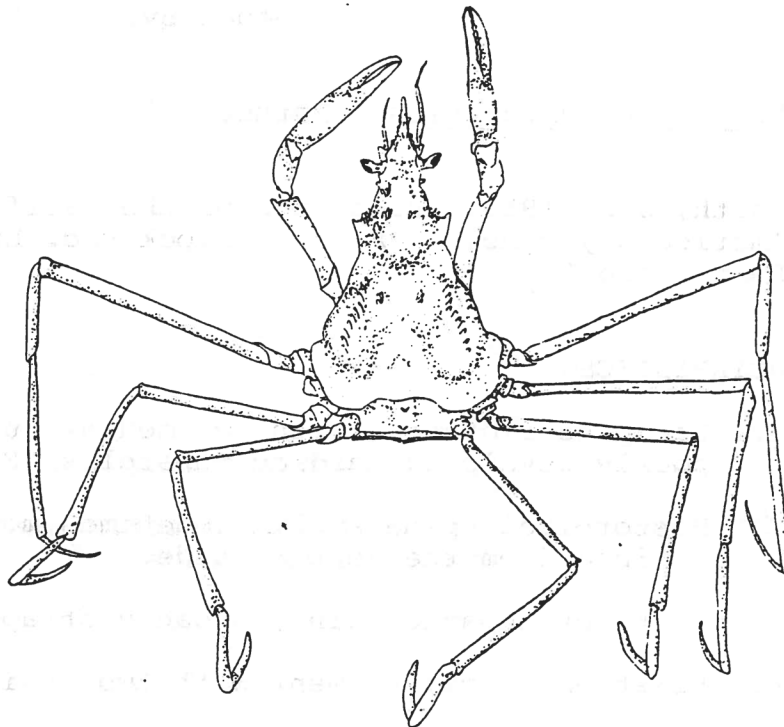


Fig. 1 Female Podochela lobifrons

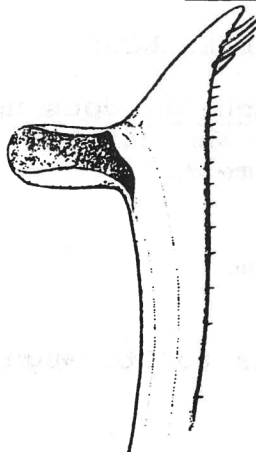


Fig. 2 Right first male pleopod (from Garth 1958)