

Phylum Arthropoda
Class Malacostraca
Superorder Eucarida
Order Decapoda
Suborder Reptantia
Infraorder Brachyura
Family Pathenopidae

Heterocrypta occidentalis

Coloration: Reddish, tips of tubercles white, ridges bearing tubercles that are a bit purplish. Ambulatory legs usually a light yellow.

Defining Characteristics:

- Carapace broadly triangular
- Rostrum triangular
- Cheliped long, trigonal

Illustration

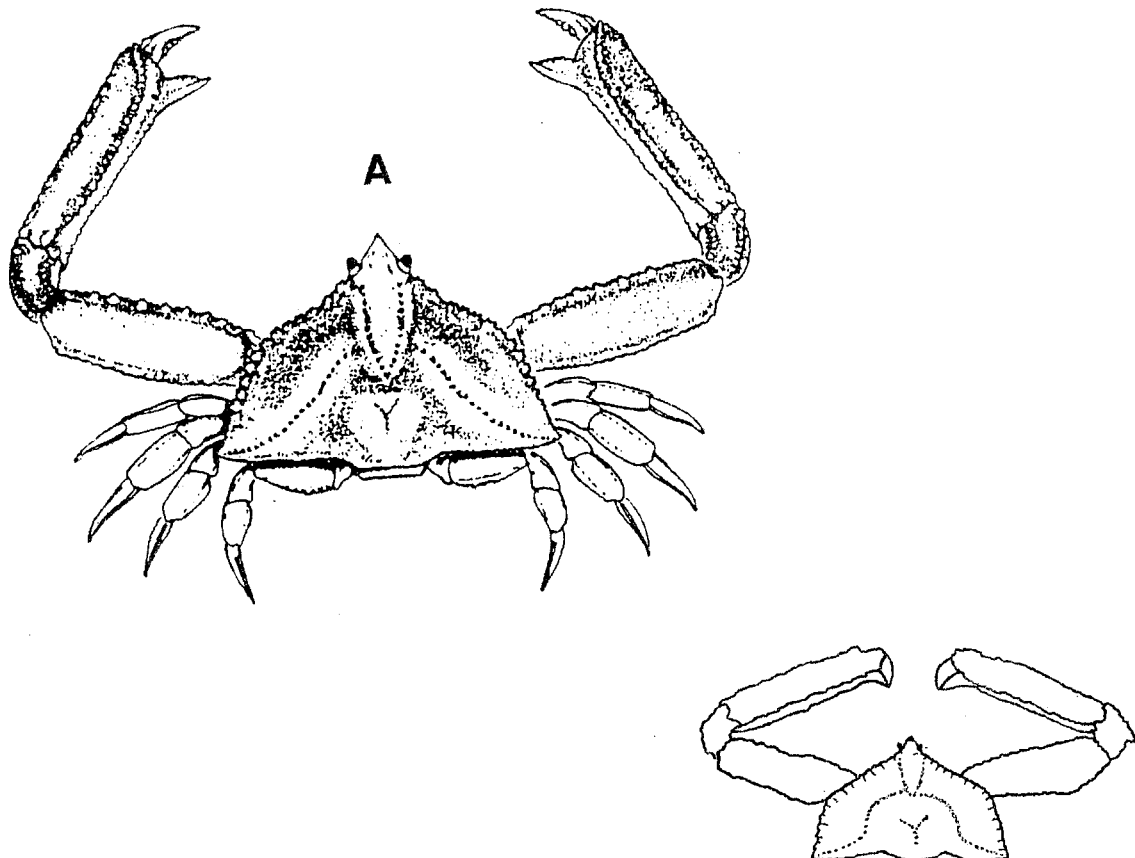


Fig. 119. *Heterocrypta occidentalis*, ♂, $\times \frac{1}{4}$ (after Dana).