



City and County of San Francisco Voucher Sheet

Species: *Ischyrocerus pelagops*
Authority: Barnard, 1962
Common Synonyms:

Voucher #: AM715
Taxa: Amphipoda: Ischyroceridae
Original Prep.Date: 27 Oct 2003
Prepared By: C.L. Black
Species Code: ISC_PELAGOPS

Voucher Information

VIAL NUMBER	SAMPLE NUMBER	STATION	SAMPLE DATE	NUMBER OF SPECIMENS	COMMENTS/NOTES
1	0109139380	54	12 Sep 2001	1	MGK
2	BSSWC132	01	26 Jun 1989	6	
3	BSSWA001	01	5 Oct 1982	1	
4	BSSWA006	06	5 Oct 1982	3	
5	SWOOA121	50	20 Sep 1999	3	PRM. Pigmentation preserved.
6	BSSWB002	02	5 Oct 1982	7	Poor condition.

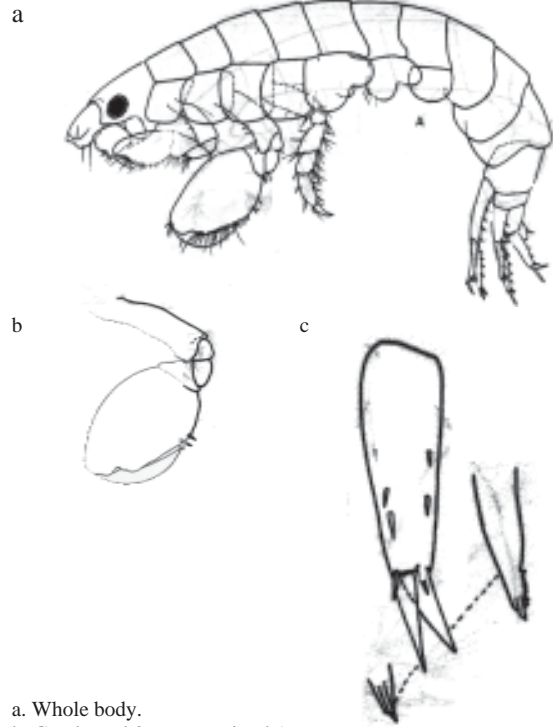
Characters:

- Gnathopods 1 and 2 have spines on the propodus at the point where the dactyl meets the propodus. (b) Because the gnathopods are quite setose, this is best observed using a compound microscope.
- Denticles on the outer ramus of uropod 3 are minute and variable in number. The denticulated portion of the ramus is about 1/5 the total length of the ramus (c).
- Propodus of gnathopod 2 no more than twice as long as that of gnathopod 1 (a).

Additional Information:

Type locality is off Laguna Beach at 6 fathoms on a bottom of fine gray sand.

Illustrations:



- a. Whole body.
b. Gnathopod 2, setae omitted (appearance is the same for both male and female).
c. Uropod 3. Outer ramus is on the right.
a,b,c from Barnard 1962

Ischyrocerus pelagops (continued)

Similar Species:

In *Ischyrocerus anguipes* and *Ischyrocerus* sp. SF1, the denticles on the outer ramus of uropod 3, which are pronounced and always 4 in number, occupy 1/3 of the length of the ramus. On *I. pelagops* and *Ischyrocerus* sp. SF2, they are much smaller and variable in number, occupying 1/5 or less of the length of the ramus. *I. anguipes* lacks the palmar spines found in *I. pelagops* and *Ischyrocerus* sp. SF2. *I. pelagops* differs from *Ischyrocerus* sp. SF2 only in gnathopod 2, which is greatly enlarged in *Ischyrocerus* sp. SF2.

Comments:

Our previous voucher sheet for this species gave the size of the eye (1/3 head length) as a diagnostic character, as does the species description. However, my observations of our reference material indicate that this character is unreliable; some specimens of *Ischyrocerus anguipes* and *Ischyrocerus* sp. SF1 also have eyes this large. Gnathopod spines and uropod 3 denticulation are more reliable characters.

References:

Barnard, Laurens J. 1962. Benthic marine Amphipoda of Southern California: families Aoridae, Photidae, Ischyroceridae, Corophiidae, Podoceridae. *Pacific Naturalist* 3(1):3-72.

Revision History:

13 July 2005 CLZ Added vial numbers and corrected some information in voucher specimen section.