

# *Gammaropsis spinosa*

## Diagnostic Characters:

Epimera 1-3, posterodistal corner not notched

Coxae 1-5 deeper than the body plates

G2, female, palm excavate

P5, male, segment 2 much wider than segment 2 of P6 & P7, segment 4 expanded, hind margin spinose

G2, male, not greatly heavier than G1, segment 5 at least as long as segment 6, posterior margin more than half the length of the anterior margin and not lobate

Uropods 1 and 2, rami subequal or longer than the peduncle.

Uropod 2 lacking a peduncular spinous process

Uropod 3, outer ramus only terminally setose

Urosome not dorsally cusped.

Peraeopods 3 and 4, segment 4 half to three-quarters the length of segment 5.

## Illustration:

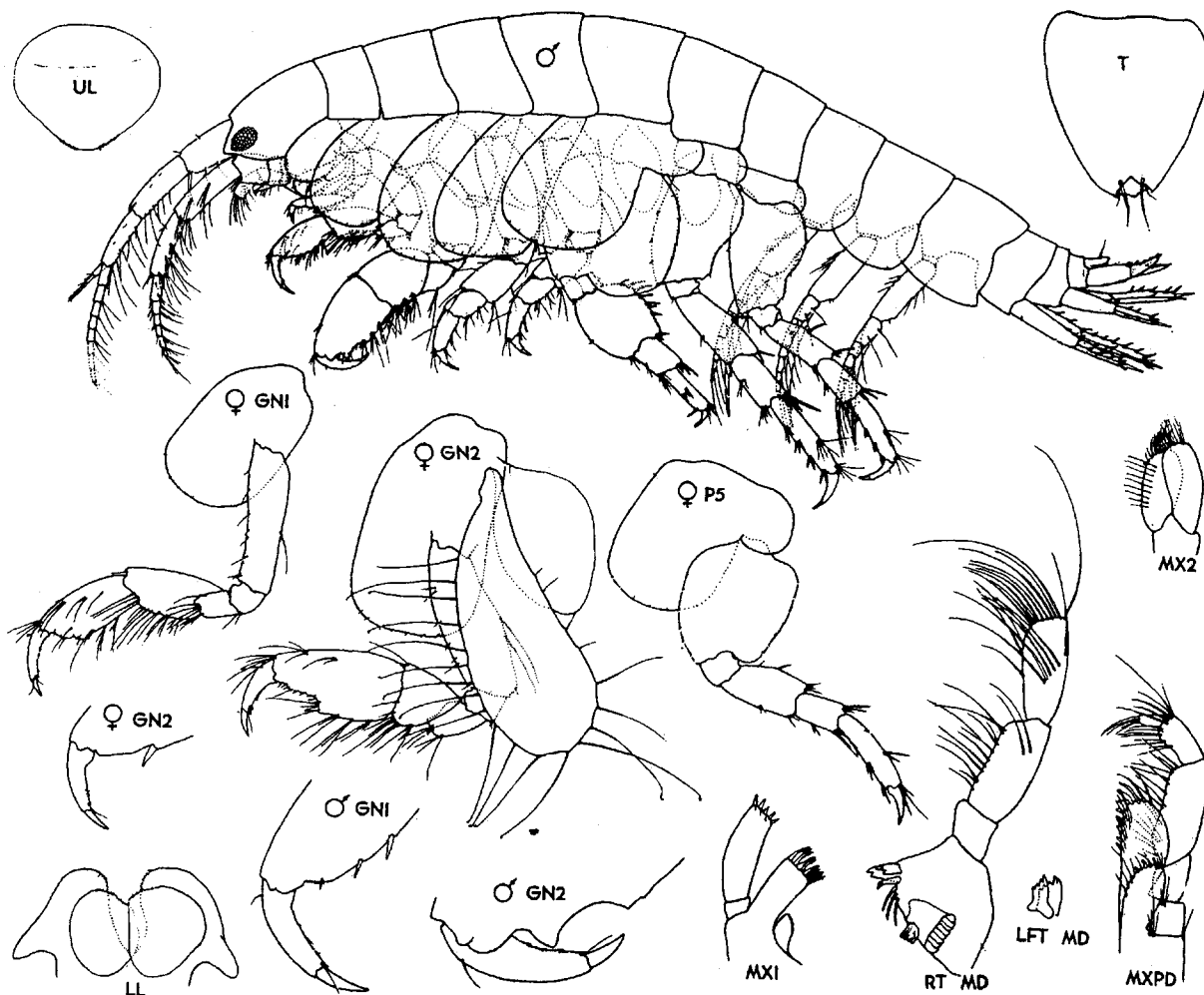


Figure 3. *Gammaropsis spinosa* (Shoemaker) ♂ 3.0 mm, Gooding Cove, Quatsino Sound, Vancouver Is., B.C.; ♀ 3.0 mm, Cape Beale, Barkley Sound, Vancouver Is., B.C.