

# *Ampelisca coeca*

## Diagnostic Characters:

- Eyes absent
- Tooth on posterior corner of E3
- U2 outer ramus bearing apical spine
- A1: article 1 and 2 subequal
- P7 with article 5 longer or subequal to 6
- P7 article 4 poorly produced
- U3 with lanceolate rami

## Illustration:

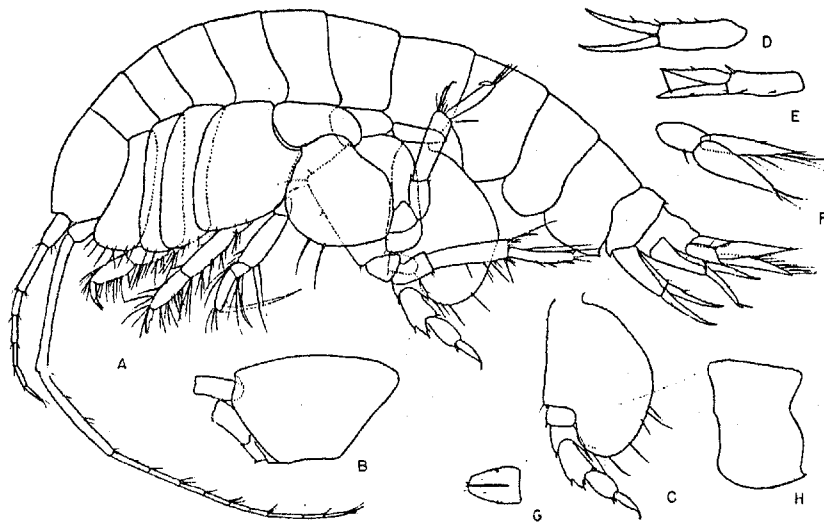


Fig. 5. *Ampelisca coeca* Holmes. Female, 5.5 mm, sta. 2440. A, lateral view of animal; B, head; C, peracopod 5; D, E, F, uropods 1, 2, 3; G, telson; H, pleon segment 3.