

Hartmanodes hartmanae

Diagnostic Characters:

- Coxa 1 not produced antero-distally
- G1 propod relatively narrow (2 times longer than broad)
- Rostrum with ventral "keel" convex
- Rostrum subacute
- Coxa 1-4 subequal
- Coxa 4 not distally expanded
- Telson rounded or truncate
- G1, article 5, lobe does not appear to be pinched at the base
- G1, article 5, lobate
- Pigmented eyes present

Illustration:

364

PACIFIC NATURALIST

VOL. 3, No. 12

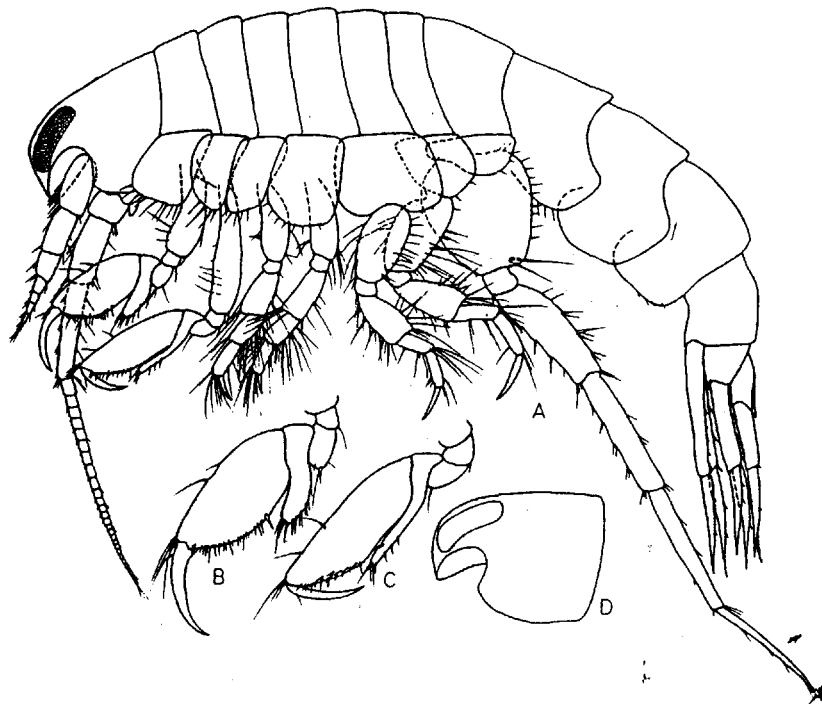


Fig. 6. *Monoculodes hartmanae*, n. sp. Male, 3.0 mm, sta. 4863: A, lateral view; B, C, gnathopods 1, 2; D, head.

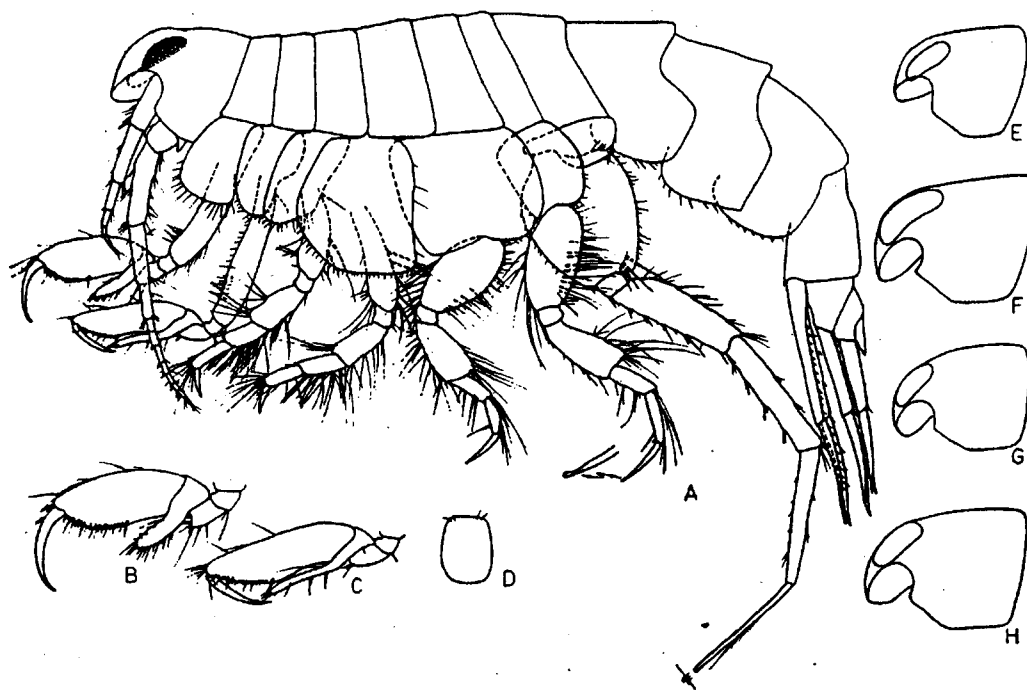


Fig. 7. *Monoculodes hartmanae*, n. sp. Female, 4.0 mm, sta. 2993: A, lateral view; B, C, gnathopods 1, 2; D, telson. Variation in head appearance, partially due to preservation and length of time after molting: E, F, G, H.