

SCAMIT Code: HYP36

Date examined: October 15, 1984

Voucher By: Ann Martin

Literature:

Barnard, J.L. 1962. Benthic marine amphipoda of southern California: Family Oedicerotidae. Pac. Nat. 3:251-371.

Diagnostic characters:

1. Body small, no pigment pattern.
2. Stout deflexed rostrum with eye filling much of it (Fig. 1).
3. Gnathopod 2 with lobe on article 5 reaching to palm of article 6.
4. Gnathopod 2 with slender lobe on article 5 reaching to palm of article 6; article 5 slender on both gnathopods (Fig. 2).

Variability:

The head varies in shape (Fig. 3).

Related species and character differences:

Barnard (1959) noted that M. hartmanae is closely related to M. nyei, but the latter has a more elongate hand on gnathopod 2 and has originally described from Florida and Brazil.

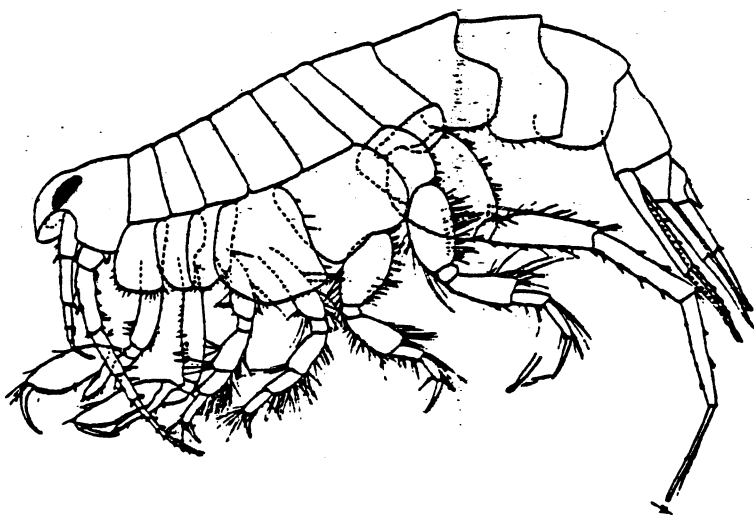


Fig. 1. Female M. hartmanae
(From Barnard, 1962).

See Male on next page.

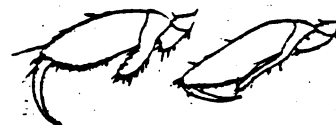


Fig. 2. Gnathopods 1 and 2
(From Barnard, 1962).

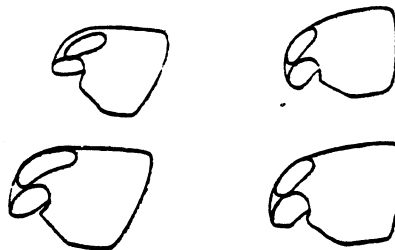


Fig. 3. Variation in head
shape (From Barnard, 1962).

Depth range: 2-100m

Distribution:

Pt. Conception, California, to Bahia de Sa Quintin, Baja California

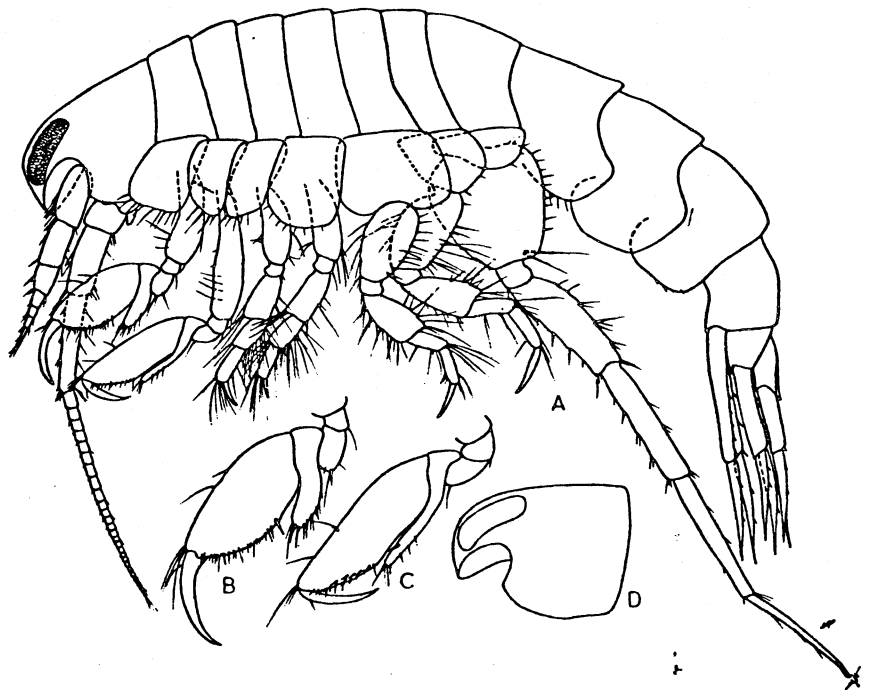
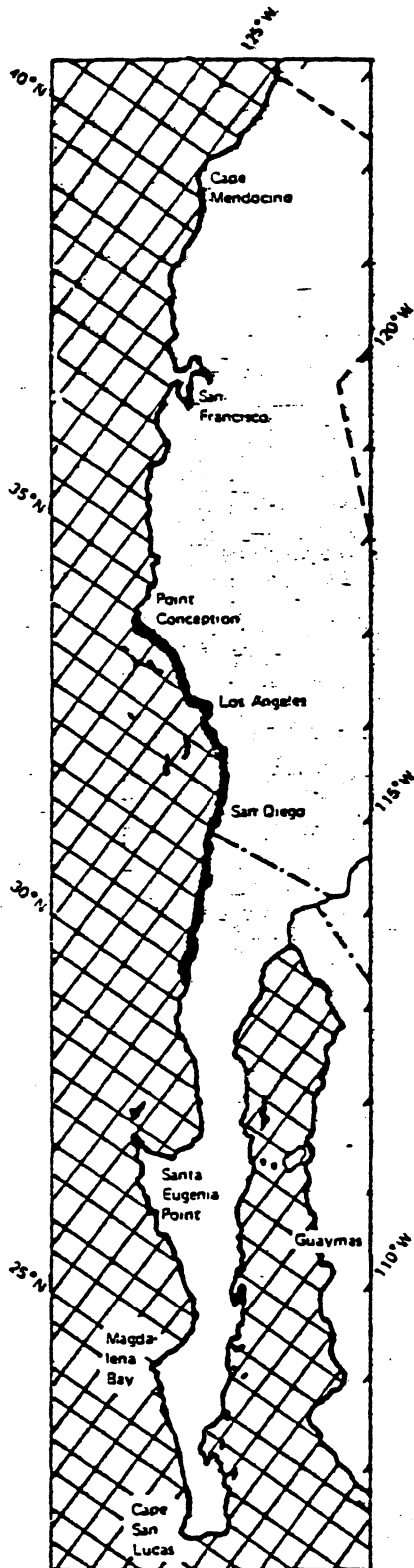


Fig. 6. *Monoculodes hartmanae*, n. sp. Male, 3.0 mm, sta. 4863: A, lateral view; B, C, gnathopods 1, 2; D, head.