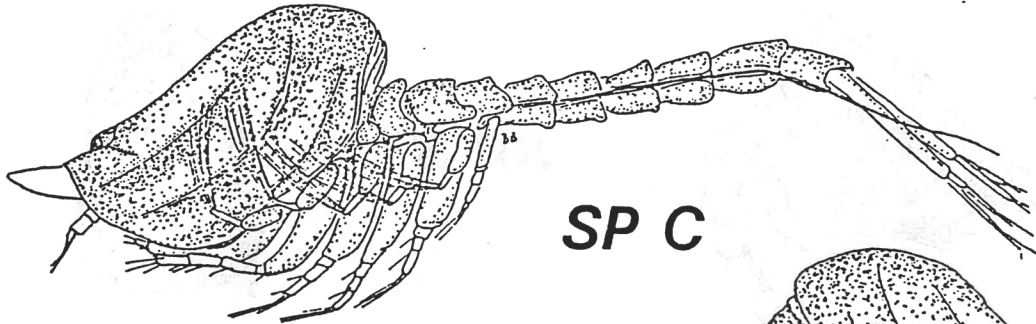
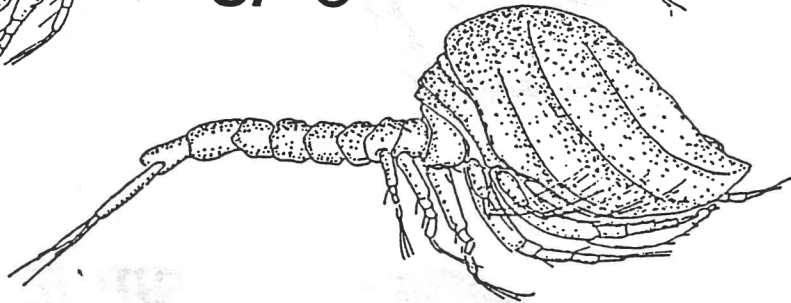


NEW SPECIES OF *CAMPYLASPIS* 1

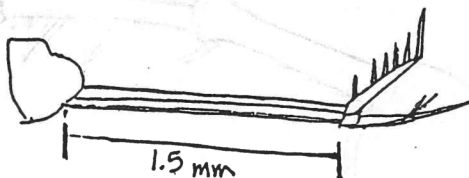


SP C

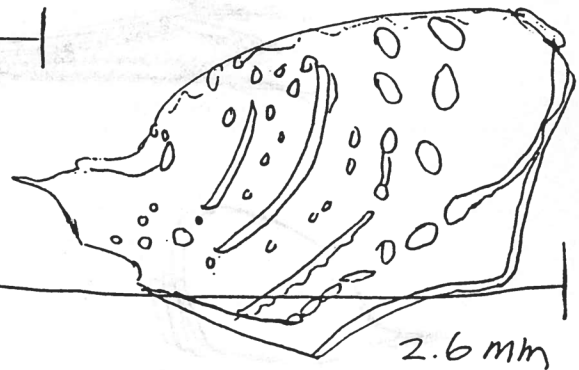


3.0 mm

SP Q

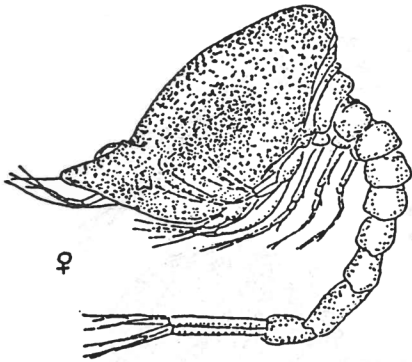


1.5 mm

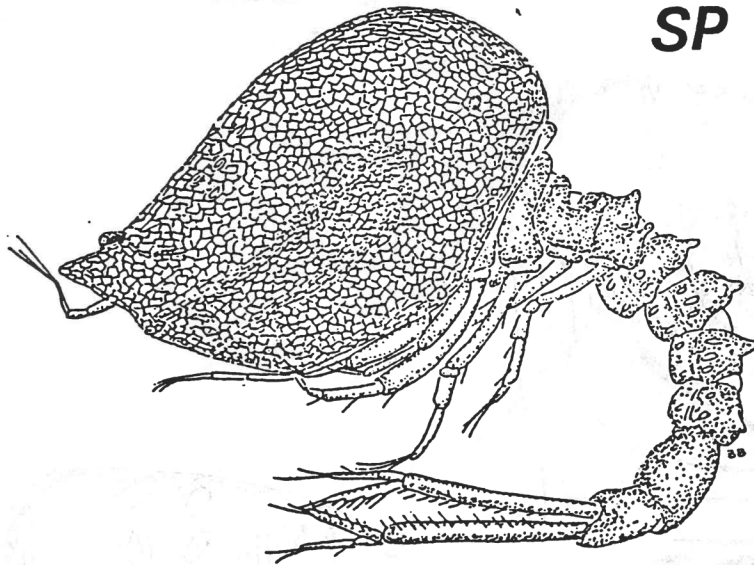
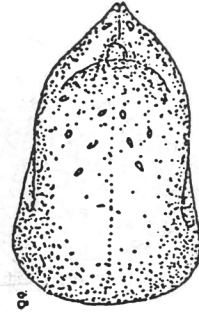


2.6 mm

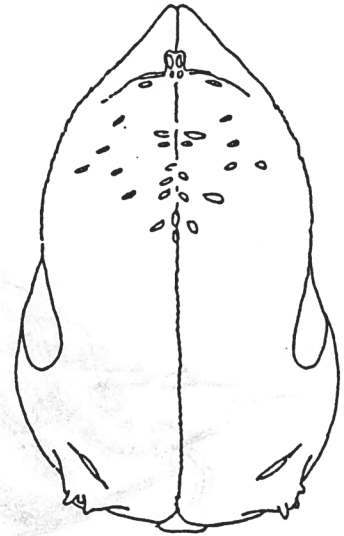
NEW SPECIES OF *CAMPYLASPIS* 2



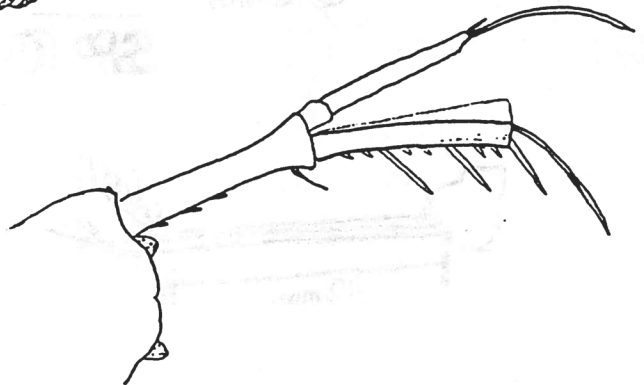
SP B



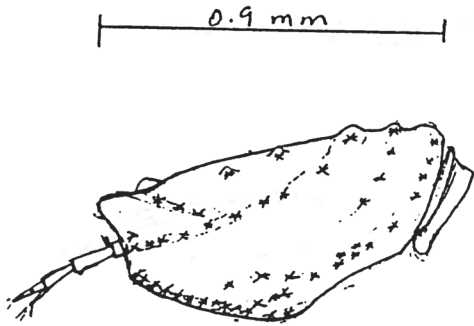
SP E



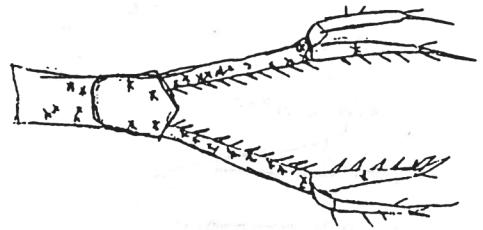
SP O



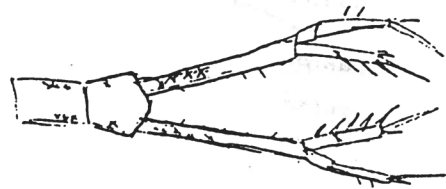
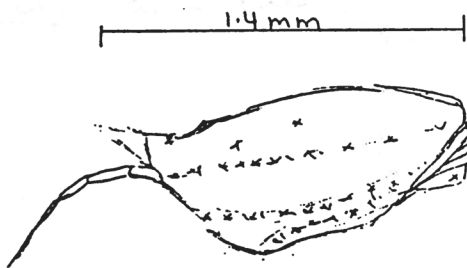
NEW SPECIES OF *CAMPYLASPIS* 3



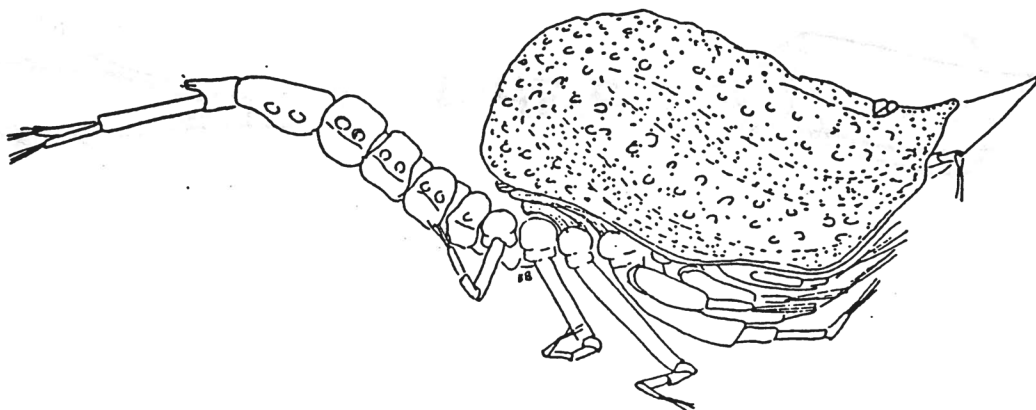
SP P



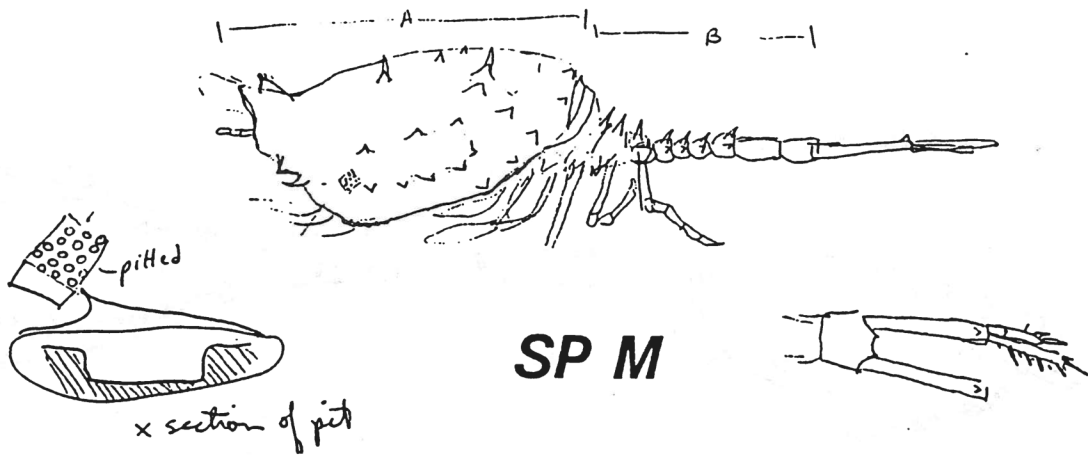
NR CRISPA



SP F



NEW SPECIES OF CAMPYLASPIS



AND PROCAMPYLASPIS

