

FIGURE 1. 1) Dorsal and lateral views of *Apanthura libyana* ♀ (from Negoescu 1980); 2) piercing mouthparts of *Paranthura elegans* (from Menzies 1951); 3) biting mouthparts of *Cyathura munda* (from Menzies 1951)

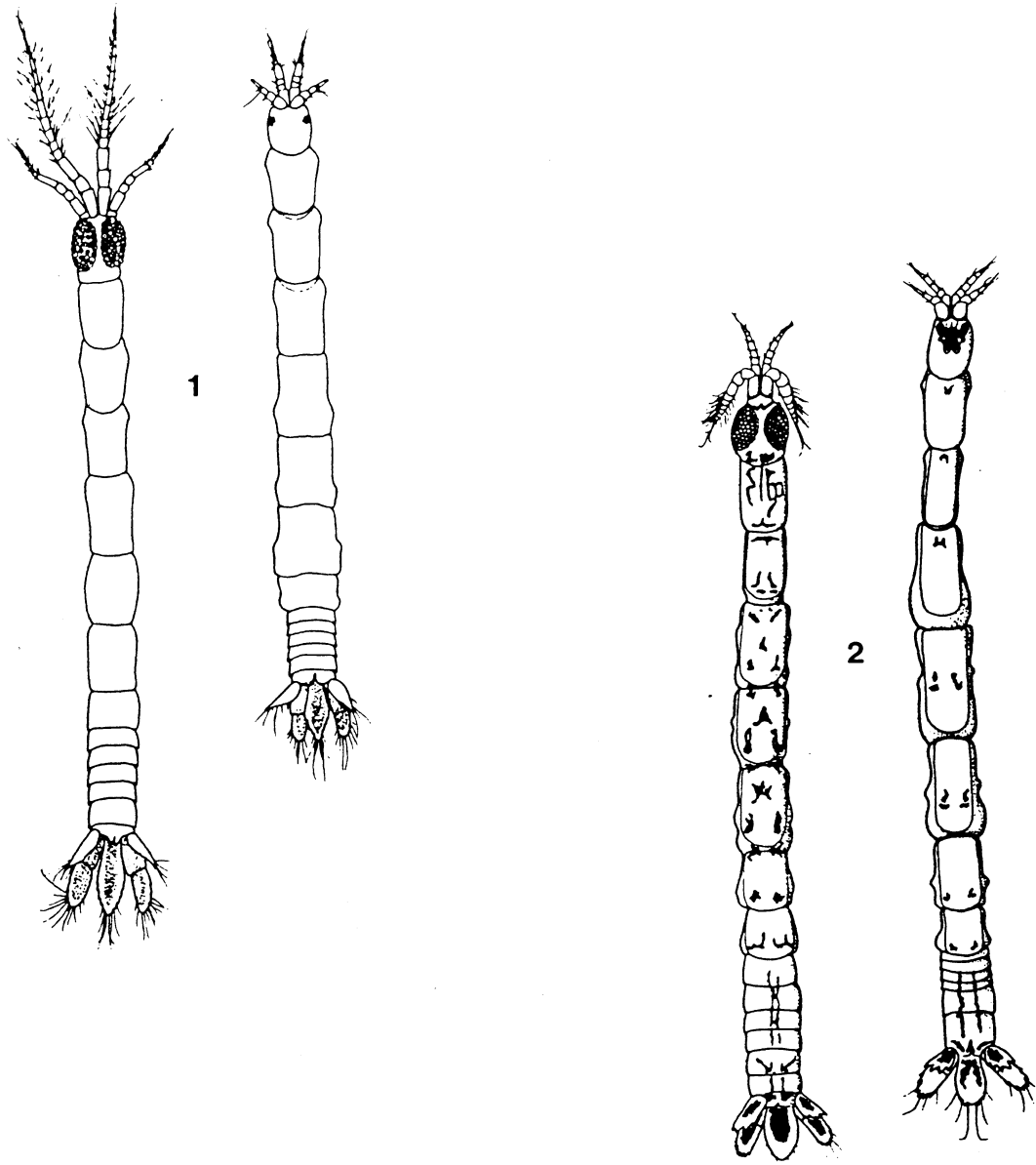
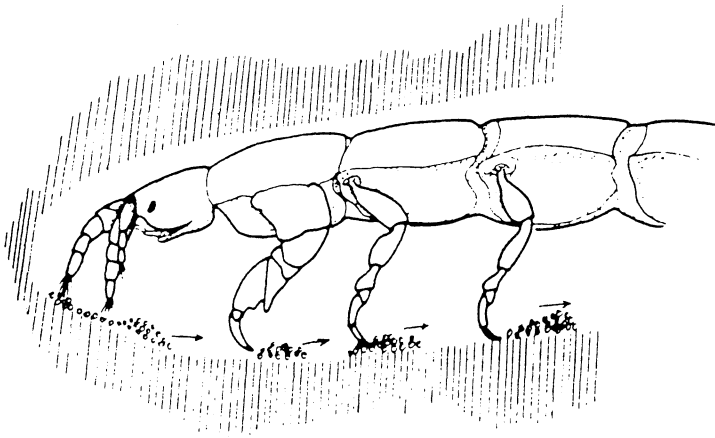
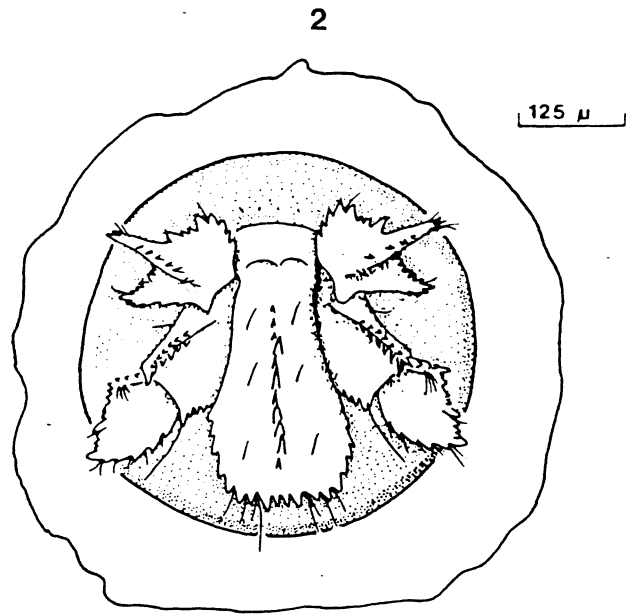


FIGURE 2. Anthurid sexual dimorphism. Male/female pairs of 1) *Chalixanthura lewisi* and 2) *Chalixanthura scopulosa* (male to the left of each pair)(from Kensley & Schotte 1989)



1



2

125 μ

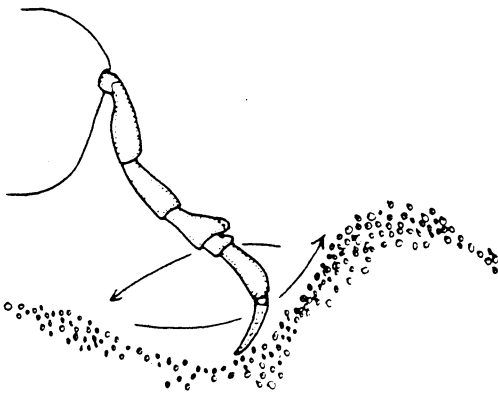
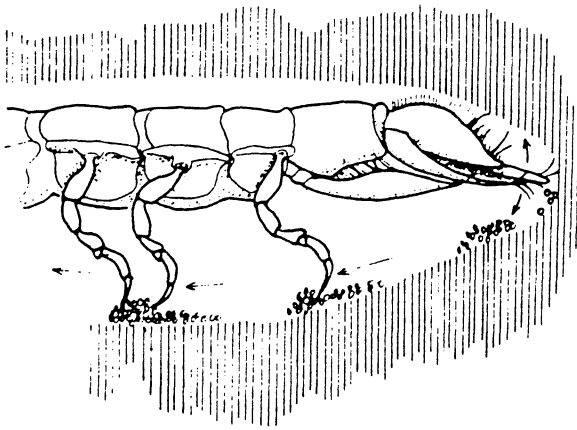


FIGURE 3. 1) *Cyathura carinata* excavating a burrow with anterior appendages, posterior appendages and pleotelson, and pereopods (from Wägele 1981); 2) tail fan of *Eisothisotos macrurus* at the aperture of a serpulid tube (from Wägele 1981)

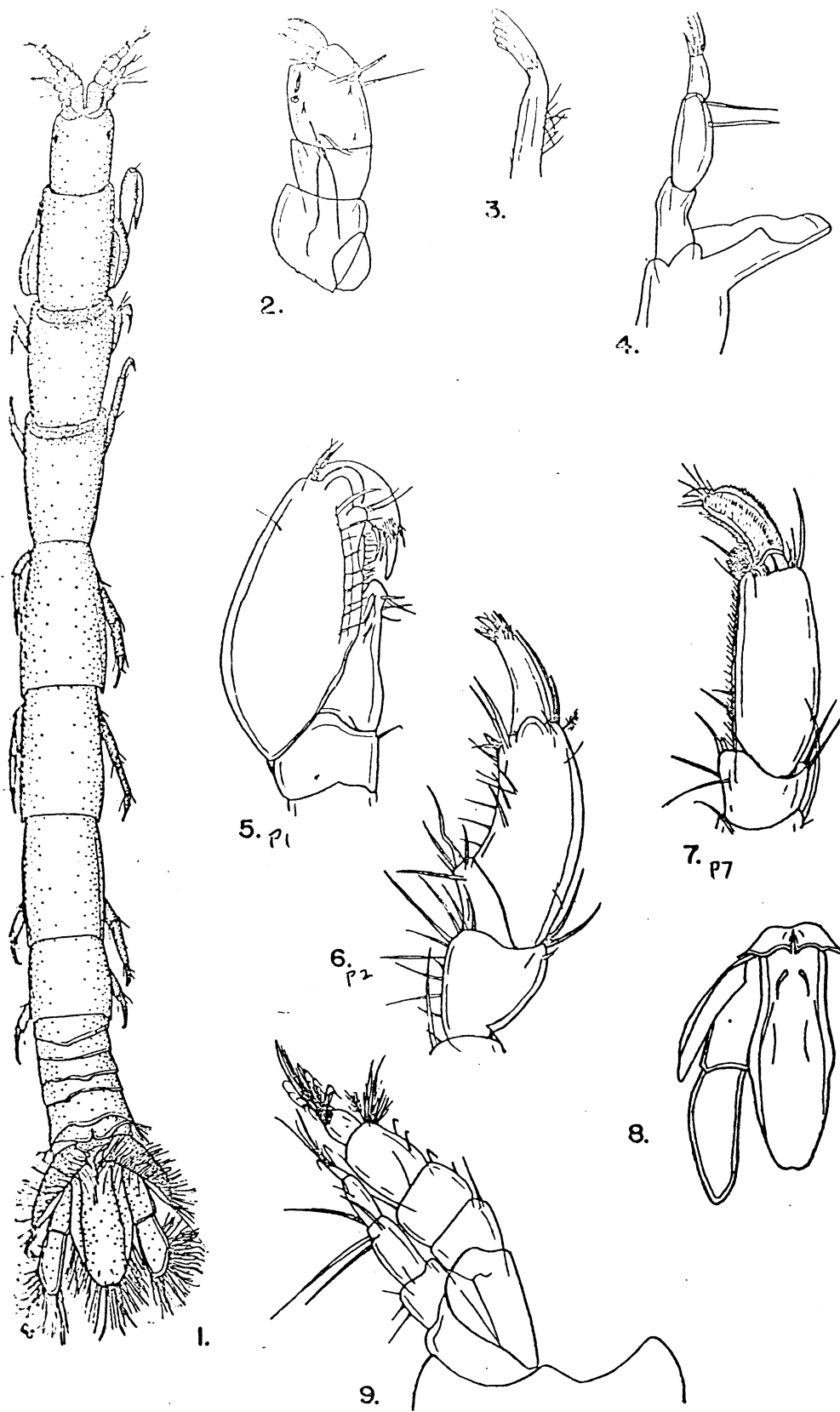


FIGURE 4. *Amakusanthura californiensis* - 1) ♀ whole animal, dorsal view; 2) maxilliped; 3) maxilla 1; 4) mandible; 5) pereopod 1; 6) pereopod 2; 7) pereopod 7; 8) tail fan; 9) antennae (from Schultz 1964)

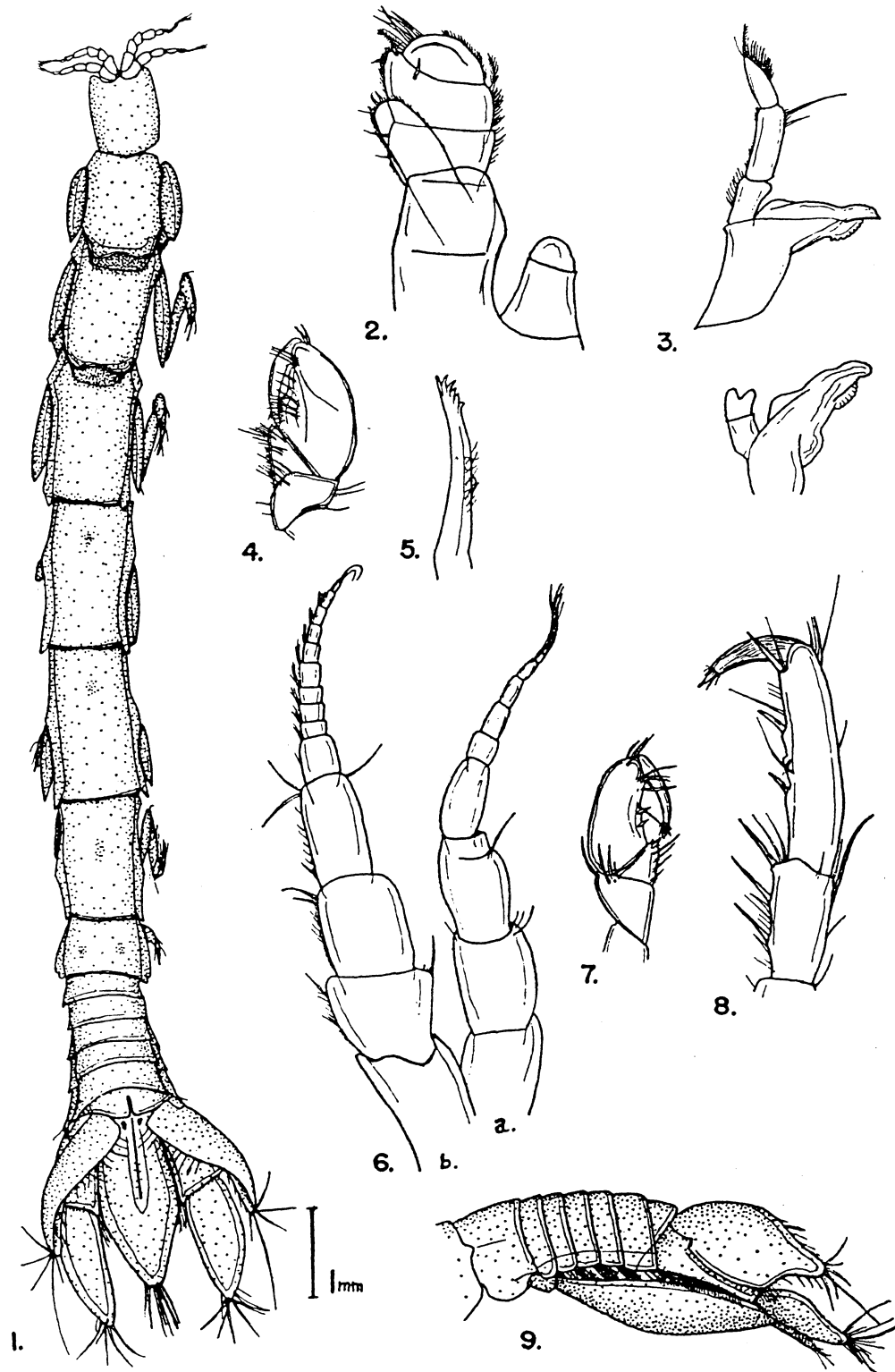


FIGURE 5. *Ananthura luna* - 1) ♀ whole animal, dorsal view; 2) maxilliped; 3) mandible; 4) pereopod 1; 5) maxilla 1; 6) antennae; 7) pereopod 2; 8) pereopod 7; 9) lateral view of pleon and tail fan (from Schultz 1966)

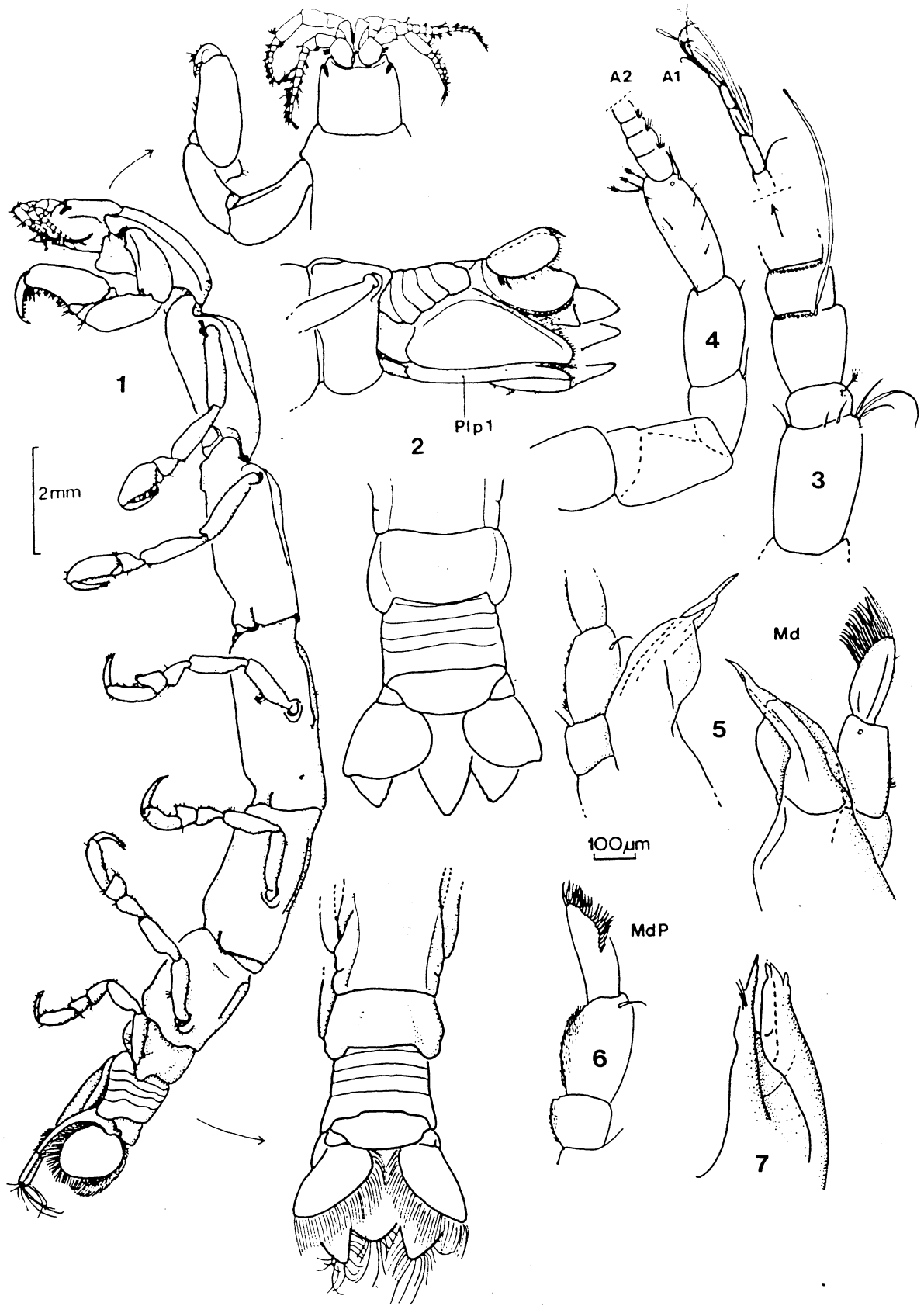


FIGURE 6. *Calathura branchiata* - 1) ♀ whole animal lateral view, with dorsal views of head and pleon/tail fan; 2) ventral oblique and dorsal views of the pleon/tail fan of another specimen; 3) antenna 1; 4) antenna 2; 5) mandible (2 views); 6) mandibular palp; 7) lower lip (labium)(from Wägele 1981)

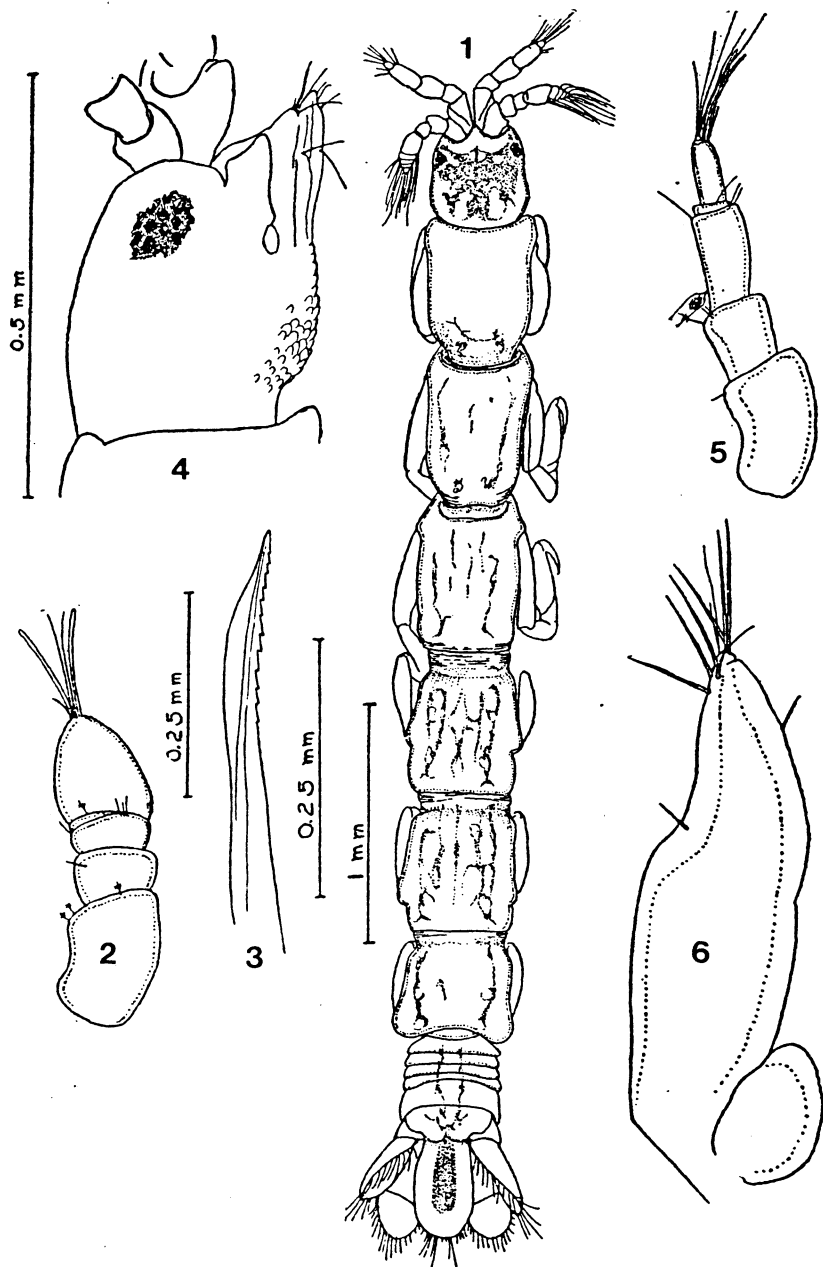


FIGURE 7. *Califanthura squamosissima* - 1) holotype ♂, dorsal view; 2) antenna 1 of juvenile ♂; 3) tip of maxilla 1; 4) later view of head, holotype ♂; 5) antenna 1 of ♀; 6) maxilliped of holotype ♂ (from Menzies 1951)

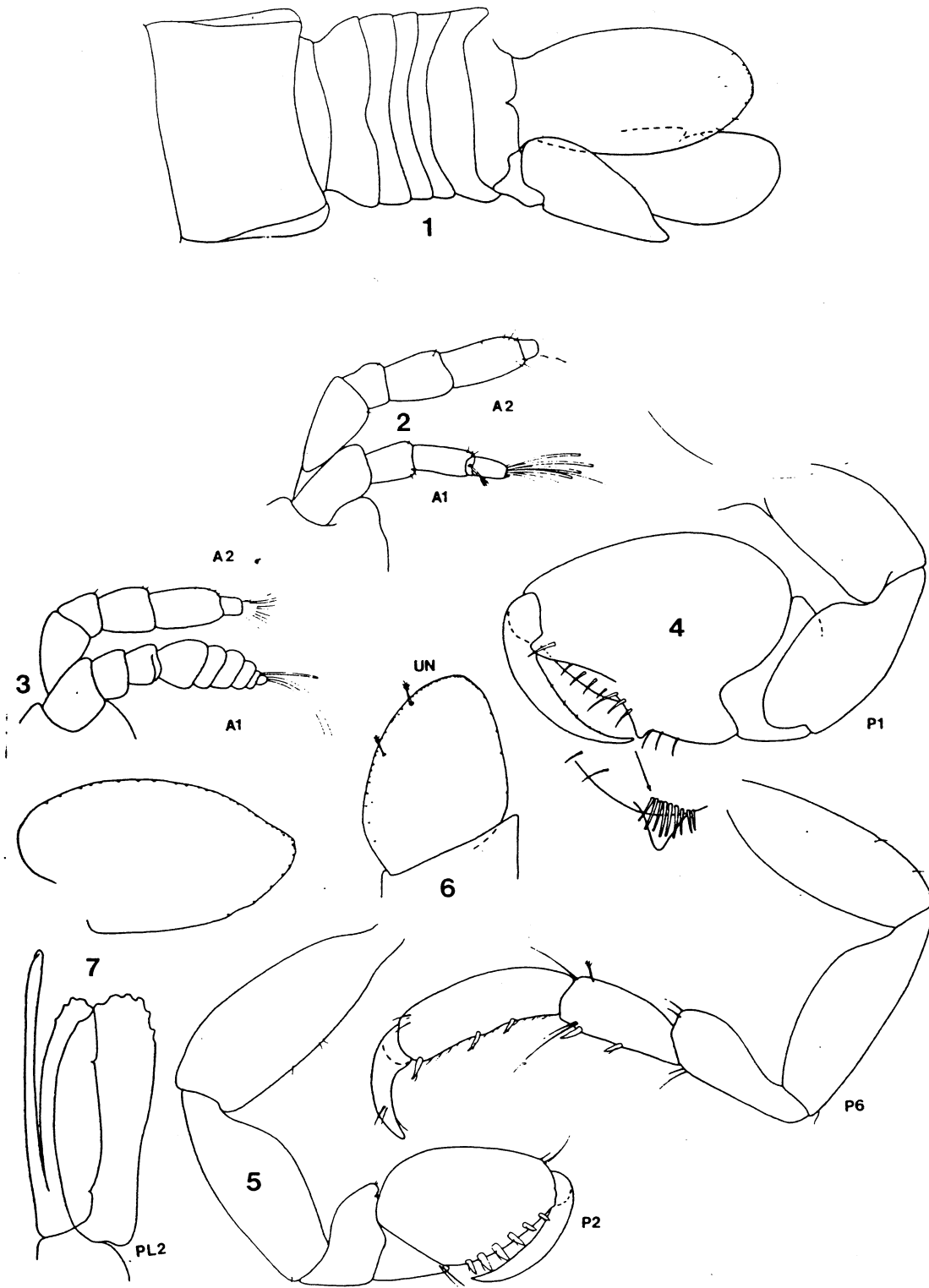


FIGURE 8. *Colanthurus bruscai* - 1) dorsal view of ♀; 2) antennae of ♀; 3) antennae of ♂; 4) pereopod 1 of ♀; 5) pereopod 2 of ♀; 6) uropodal endopod of ♀; 7) uropodal exopod of ♀; pleopod 2 of ♂ (from Poore 1984)

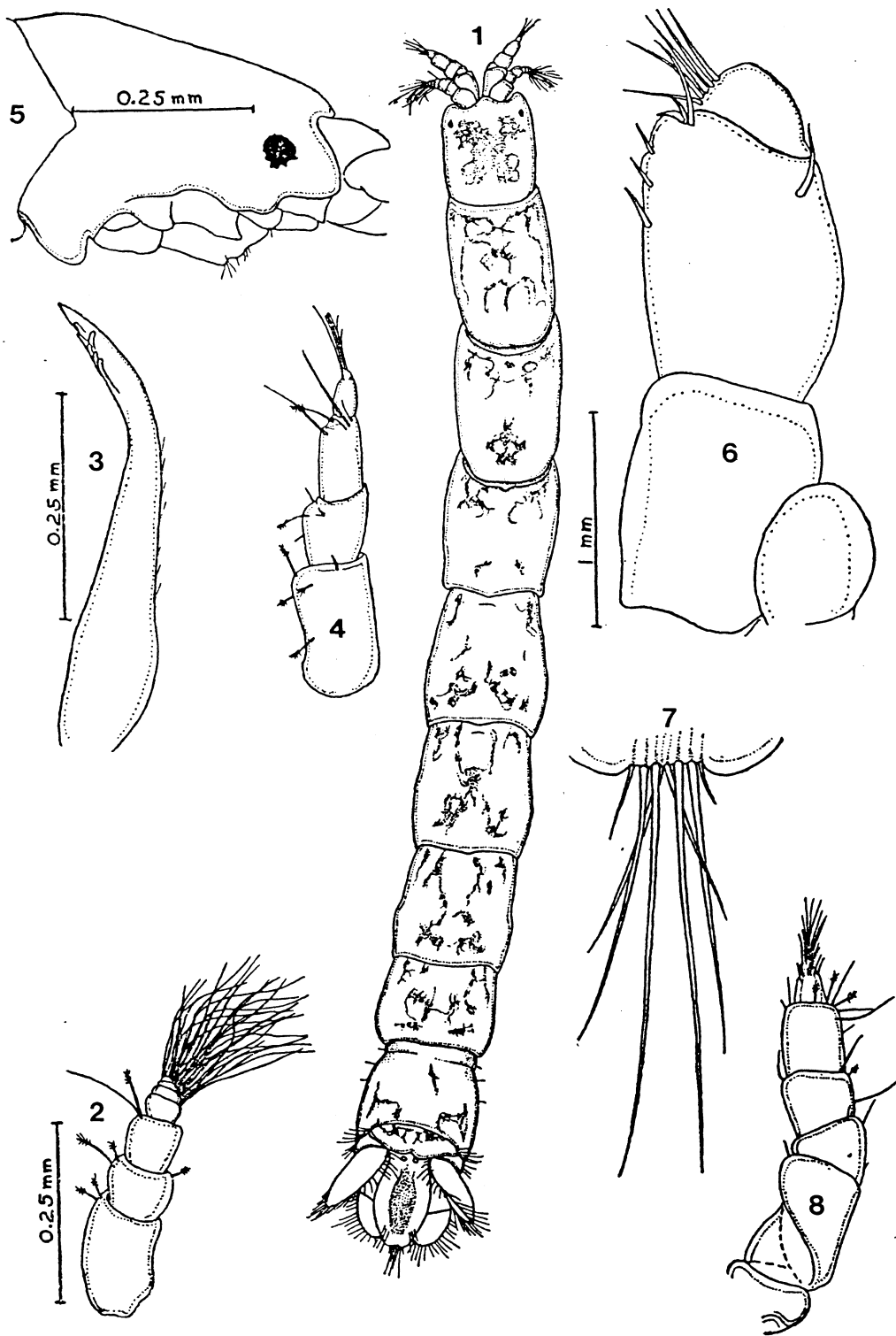


FIGURE 9. *Cyathura munda* - 1) dorsal view of ♂; 2) antenna 1 of ♂; 3) maxilla 1; 4) antenna 1 of ♀; 5) lateral view of ♂ head; 6) maxilliped of ♀; 7) tip of pleotelson of ♂; 8) antenna 2 of ♂ (from Menzies 1951)

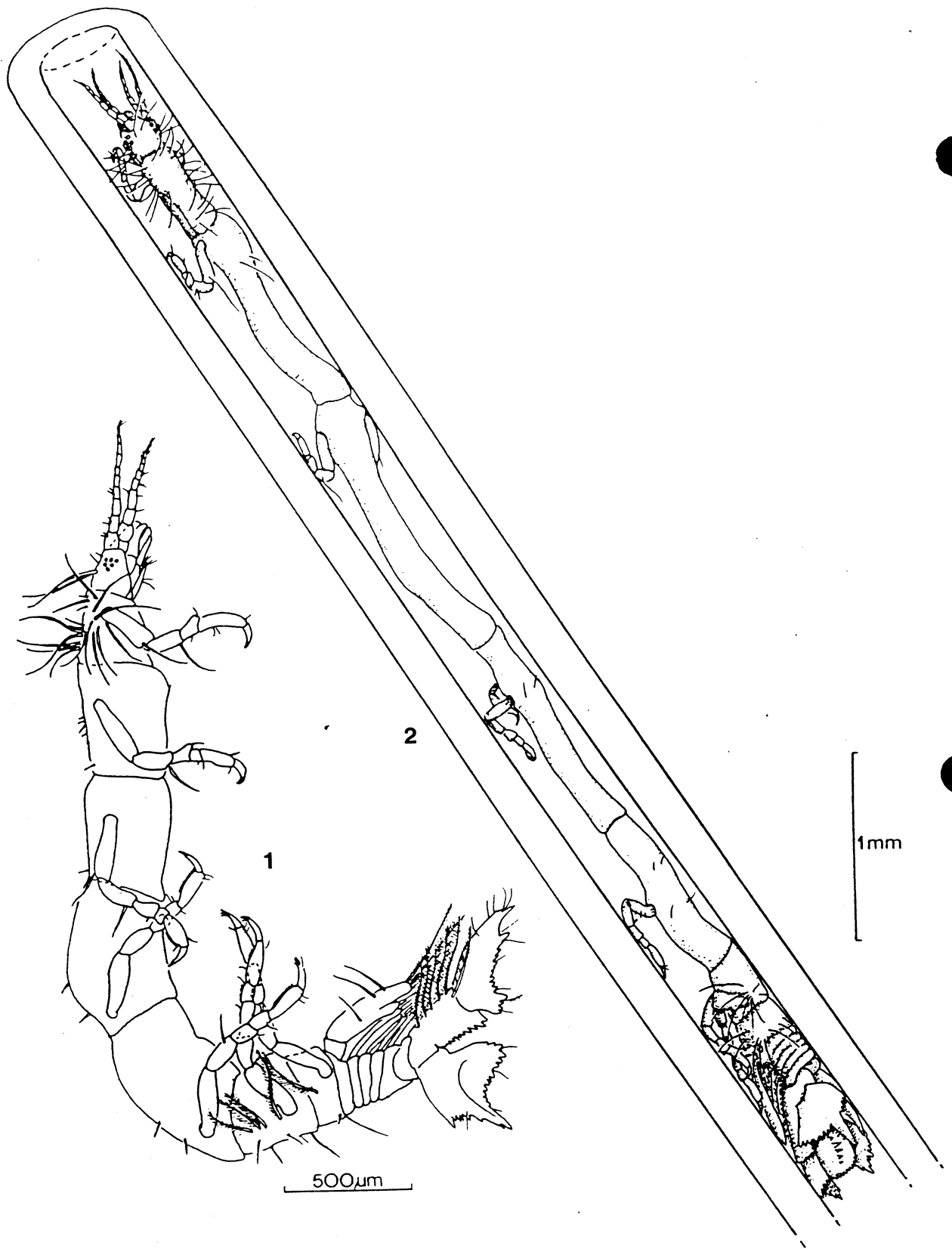


FIGURE 10. *Eisothisτος macrurus* - 1) pre-brood ♀ in lateral view; 2) post-brood female in capillary tube showing elongation of pereonites (from Wägele 1981)

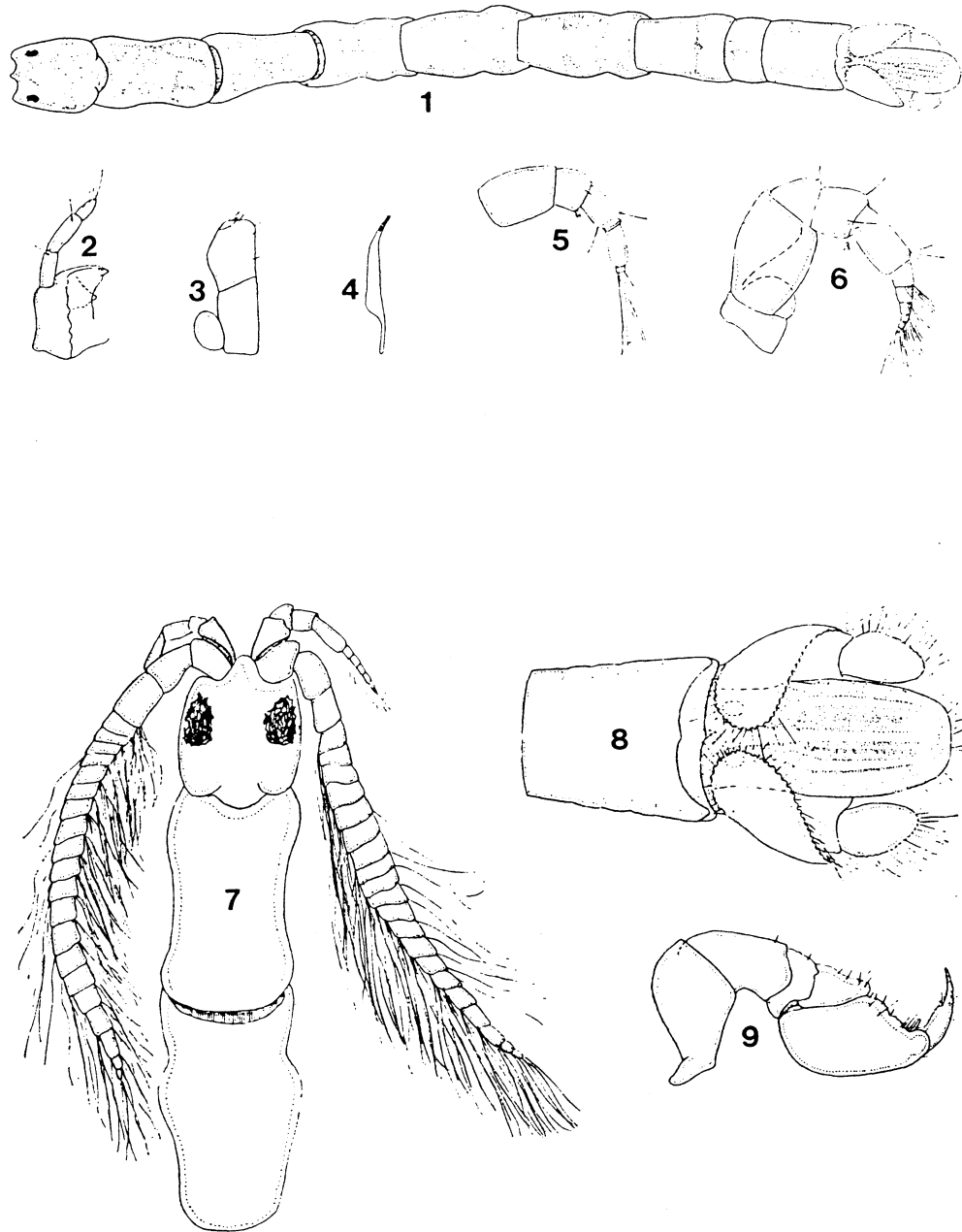


FIGURE 11. *Haliophasma geminatum* - 1) dorsal view of ♀; 2) mandible; 3) maxilliped; 4) maxilla 1; 5) antenna 1 of ♀; 6) antenna 2 of ♀; 7) anterior dorsal view of ♂; 8) pleon & pleotelson of ♂; 9) pereopod 1 of ♂ (from Menzies & Barnard 1959)

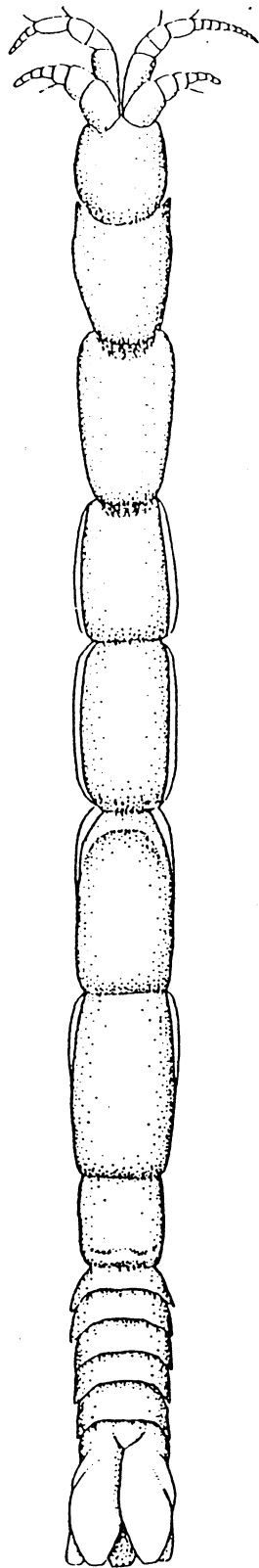


FIGURE 12. Hysurridae gen A sp A - dorsal view (from Wetzer & Brusca, in press)

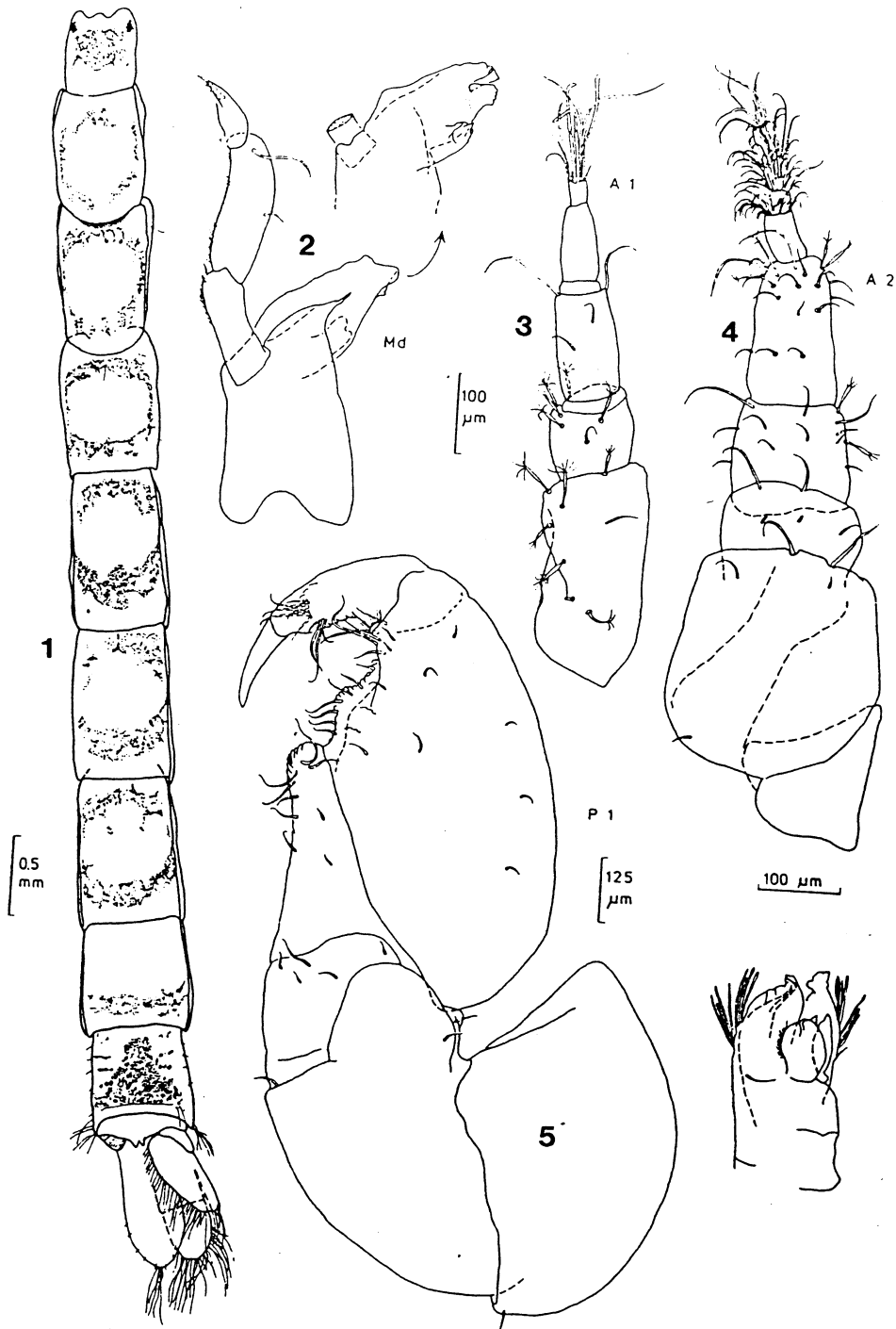


FIGURE 13. *Mesanthura occidentalis* - 1) dorsal view of juvenile; 2) mandible (2 views); 3) antenna 1; 4) antenna 2; 5) pereopod 1 (from Wägele 1984)

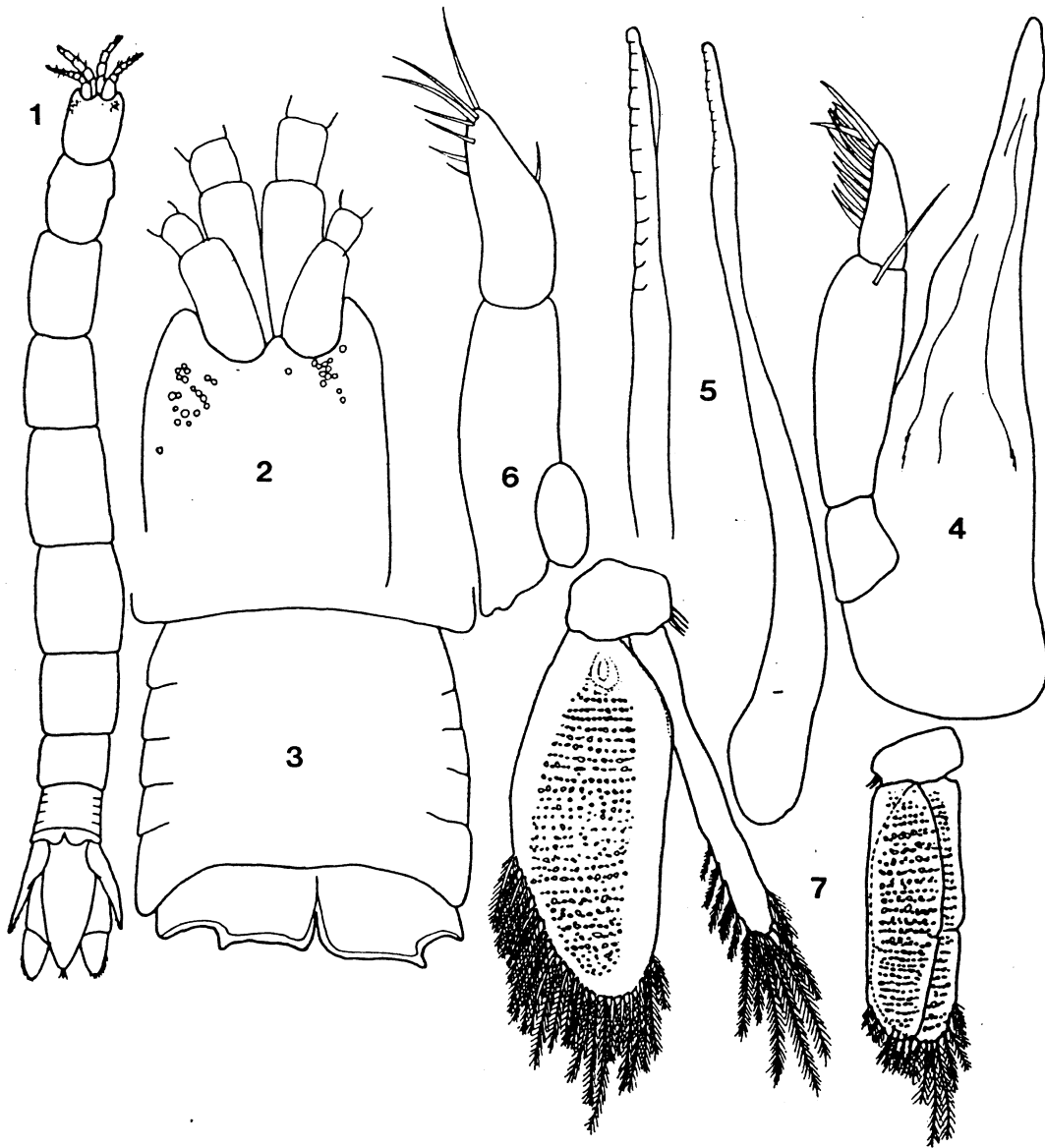


FIGURE 14. *Paranthura algicola* - 1) dorsal view of ♀; 2) head; 3) pleon; 4) mandible; 5) maxilla 1 (2 views); 6) maxilliped; 7) pleopods (2 views) (from Nunomura 1978)

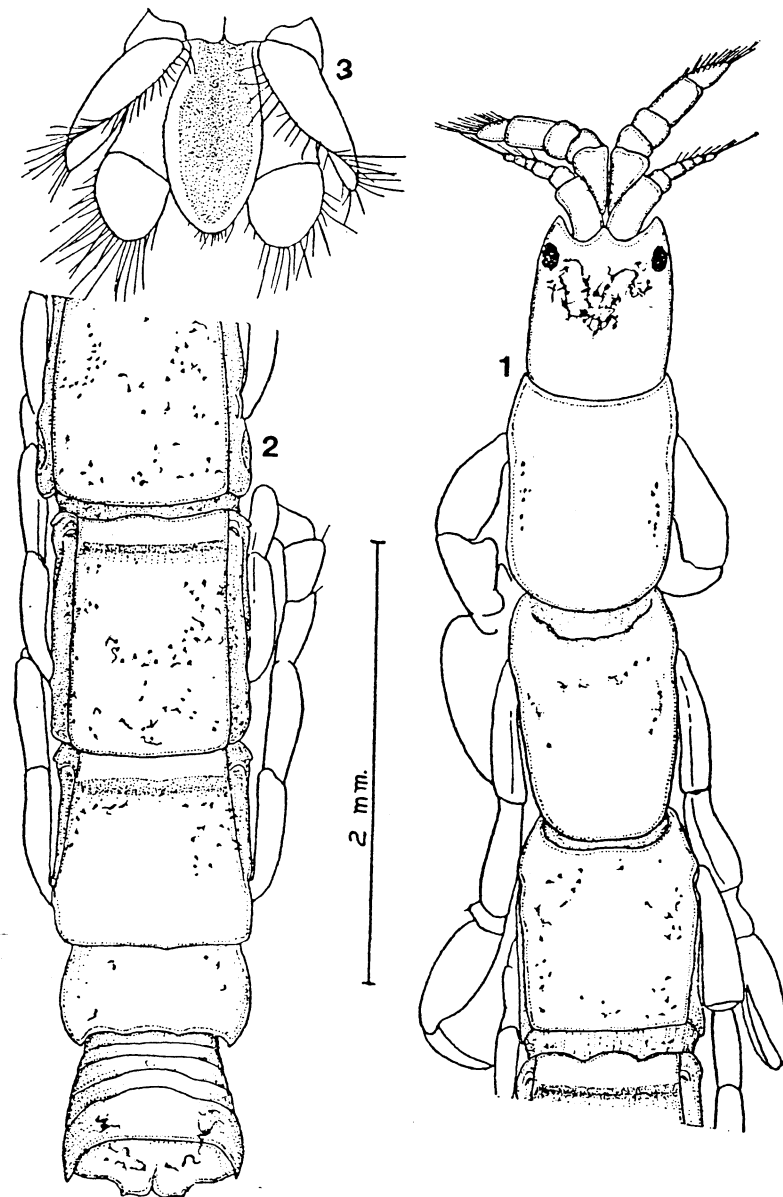


FIGURE 15. *Paranthura elegans* - 1) dorsal view of anterior body of ♀; 2) dorsal view of posterior body of ♀; 3) dorsal view of tail fan of ♀ (from Menzies 1951)