

SCAMIT CODE: None

Date Examined: January 1993

Voucher By: Don Cadien

SYNONYMY: *Pleurogonium californiense* (in part) aucct.
Pleurogonium sp A Wilson MS
Pleurogonium sp A SCAMIT 1993

LITERATURE: **Menzies, R. J. 1951.** New marine isopods, chiefly from Northern California, with notes on related forms. *Proceedings of the United States National Museum* 101(3273): 105-156
Menzies, R. J. & Barnard, J. L. 1959. Marine Isopoda of coastal shelf bottoms of Southern California - systematics and ecology. *Pacific Naturalist* 1(11):3-35.
Sars, G. O. 1897. Isopoda. Part V, VI Idotheidae, Arcturidae, Asellidae, Ianiridae, Munnidae. Bergen, Norway: Bergen Museum (An Account of the Crustacea of Norway with Short Descriptions and Figures of All the Species; II:78-117
Wilson, G. D. F. (MS 1992). Taxonomic Atlas of the Benthic Fauna of the Santa Maria Basin and Western Santa Barbara Channel. Volume NN: The Isopoda, Part 2 Suborder Asellota: NN.2-1 - NN.2-55

DIAGNOSTIC CHARACTERS:

1. antennulae with large curved anterolateral projection on distal margin
2. cuticle on body and limbs rough with apparent microscaling on all surfaces
3. lateral margins of pereonal segments without spines or serrations; coxae each bearing a posterolateral spine

RELATED SPECIES AND CHARACTER DIFFERENCES:

1. Differs from *Pleurogonium californiense* in having a large anterolateral projection of the distal margin of the first antennular article, and in having a coarsely scaled cuticle microstructure
2. Differs from *Pleurogonium rubicundum* in having no spinelike marginal tubercle on the pereonal segments, and in bearing a large posterolateral spine on the coxae of the pereonites and pleonites
3. Differs from *Pleurogonium inerme* in having spined coxae, and in having coarse cuticular scaling

DEPTH RANGE: 90 - 154m

DISTRIBUTION: Santa Maria Basin to Palos Verdes Peninsula

COMMENTS: This animal was recently described in greater detail by Wilson (MS) in a draft report on investigations in the Santa Maria Basin in Central California. He was the first to distinguish this species as more than just a form of *Pleurogonium californiense*. Records of *P. californiense* prior to 1992 require reexamination for *P. sp A* as the two co-occur in mixed populations in Central California. *Pleurogonium rubicundum* has also been reported to range into the Southern California Bight, but *P. inerme* has not yet been recorded south of Prince William Sound in the Northeast Pacific. Wilson (MS) indicated that this species may exhibit (at least in some populations) protogynous hermaphroditism.

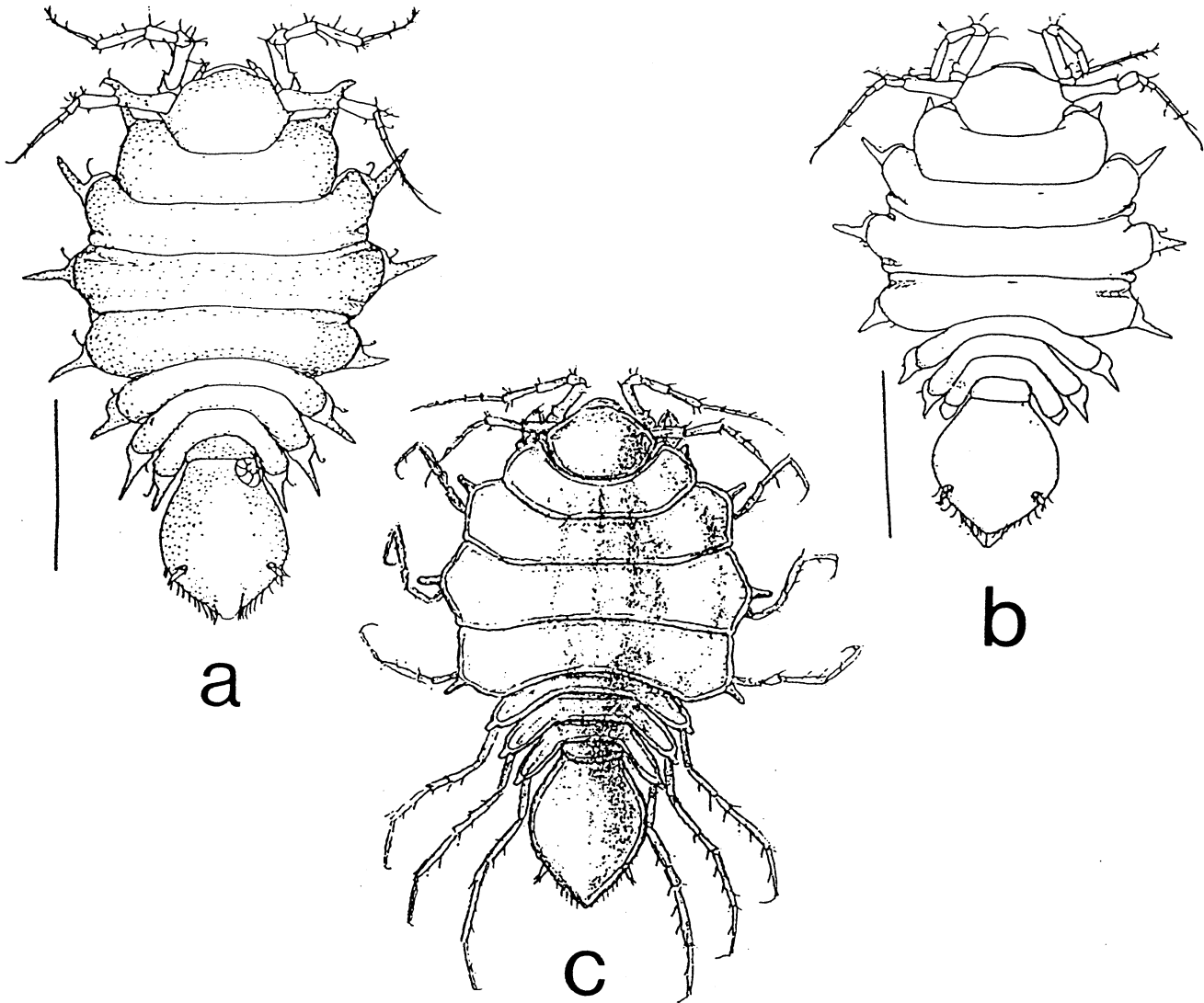


Figure 1. Species of *Pleurogonium* reported from California; A) *Pleurogonium sp A*, B) *Pleurogonium californiense* Menzies 1951, C) *Pleurogonium rubicundum* (Sars 1863)[Figures 1A and 1B from Wilson MS, Figure 1C from Sars 1897][scale bar = 0.5mm]