



# City and County of San Francisco Voucher Sheet

Species: *Bathycopea daltonae*  
Authority: (Menzies and Barnard, 1959)  
Common Synonyms: *Ancinus daltonae*  
Menzies and Barnard

Voucher #: AM360  
Taxa: Isopoda: Sphaeromatidae  
Original Prep.Date: 26 October 2005  
Prepared By: CL Zable  
Species Code: BAT\_DALTONAE

## Voucher Information

VIAL NUMBER	SAMPLE NUMBER	STATION	SAMPLE DATE	NUMBER OF SPECIMENS	COMMENTS/NOTES
1	BSSWB002	02	05 Oct 1982	4	
2	BSSWC186	04	16 Oct 1992	4	1.0 mm
3	BSSWC250	04	04 Feb 1987	1	1.0 mm
4	BSSWD186	04	16 Oct 1992	1	1.0 mm

### Characters:

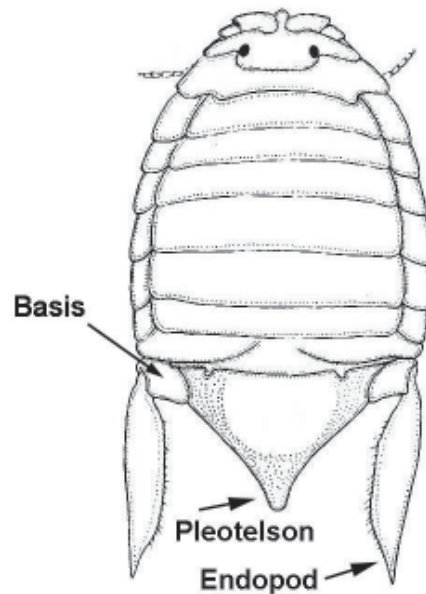
- Pointed tip on pleotelson (a).
- Uropods uniramous, with a long, flattened, pointed endopod (a).
- Pleon with a single segment plus pleotelson (this is a generic character for *Bathycopea*) (a).
- Basis of uropod is fused to pleotelson (generic character) (a).

### Additional Information:

Type specimen from medium-coarse sand off Point Conception, at 57 feet deep. (Menzies and Barnard, 1959)  
Monterey Bay to San Miguel Islands, CA 19-20 m deep. (Brusca *et al.*, 2001)

### Illustrations:

a



a from Menzies and Barnard (1959)

### Similar Species:

At first glance, *Bathycopea daltonae* may appear similar to other sphaeromatid isopods such as *Tecticeps* sp., but the pointed telson and uniramous uropods are not found in any other species in our samples.

### Comments:

***Bathycopea daltonae*** (continued)

**References:**

Brusca R.C, Cohelo V., Taiti S. 2001. A Guide to the Coastal Isopods of California. <http://tolweb.org/tree/eukaryotes/animals/arthropoda/crustacea/isopoda/accessory/caguide/caguide.html> Accessed August 26, 2005.

Menzies R. J., Barnard J. L. 1959. Marine Isopoda on coastal shelf bottoms of southern California: systematics and ecology. *Pacific Naturalist*. Volume 1. 11. p 3-35.

**Revision History:**