

Harbansus bradmyersi

Class Ostracod, Order Myodocopida, Family Philomedidate

DIAGNOSTIC CHARACTERS:

Carapace: Elongate with long narrow rostrum and small projecting caudal process. Dorsal margin more convex than ventral margin sides parallel in dorsal view.

Ornamentation: Each valve with 3 faint horizontal ribs. Upper rib extends onto rostrum. Carapace with large shallow fossae. Surface scattered with long bristles – mostly anterior, anterodorsal, and ventral margins. Some bristles are bifurcate.

Infold: Infold of rostrum with 6-7 long bristles. 6-7 frond-like bristles on infold of caudal process.

Selvage: Broad lamellar prolongation with marginal fringe present along anterior and ventral margins of valves, prolongation divided at inner end of incisor.

DIAGNOSTIC CHARACTERS:

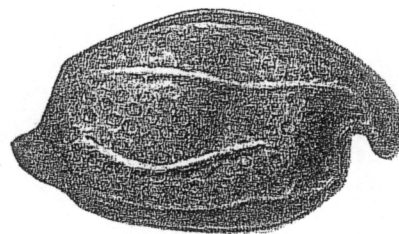
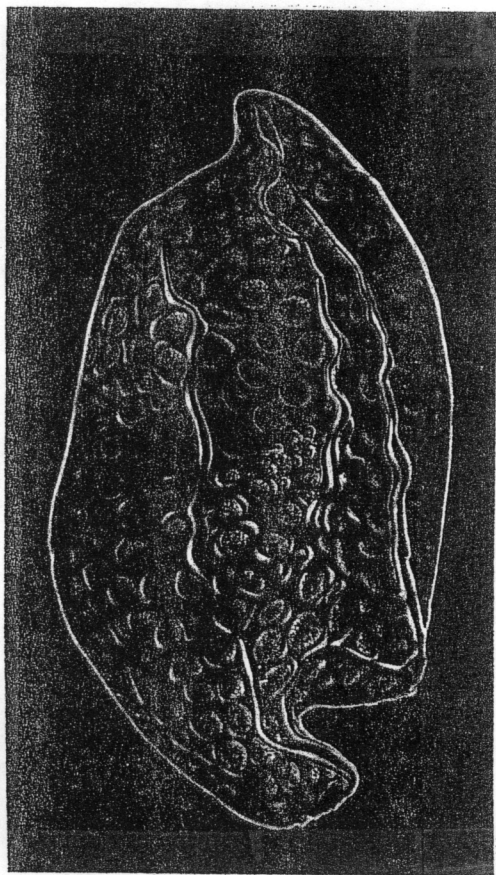


FIGURE 12.—*Harbansus bradmyersi*, new species, adult female, holotype, USNM 151989, length 0.95 mm, complete specimen.

