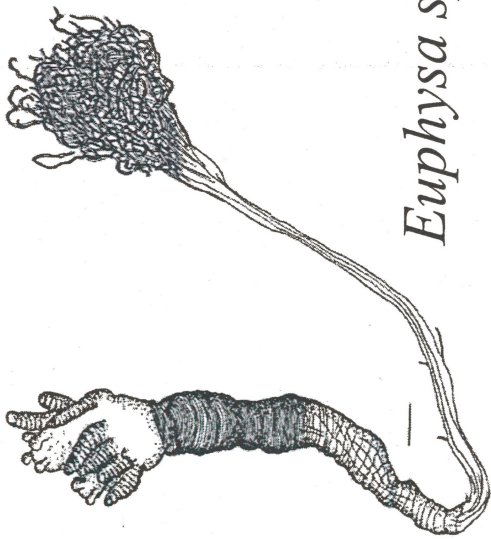


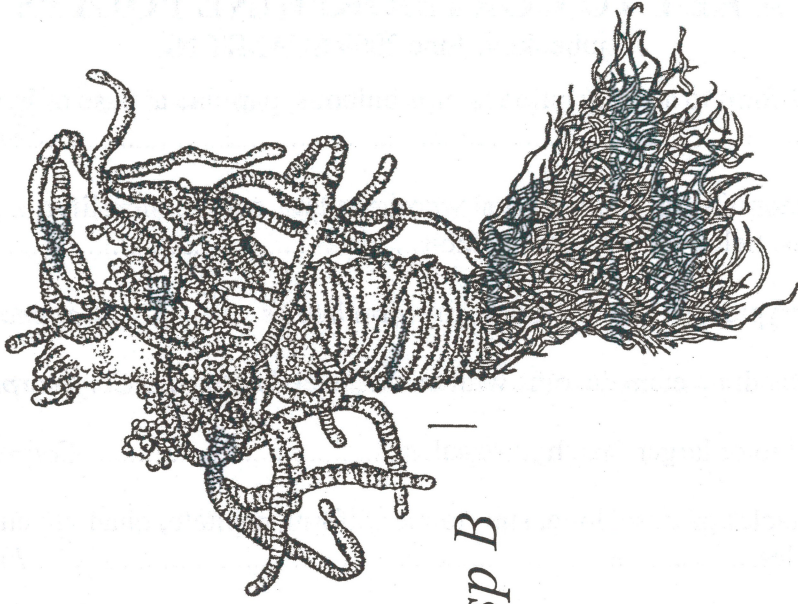
A KEY TO CORYMORPHINE POLYPS

J.Ljubenkov, June 2004 SCAMIT NL

1. Both whorls filiform to serially bulbous, tips bulbous; papillae at base of hydrocaulus
.....*Corymorpha* 2
1. Aboral whorl moniliform, capitate; oral whorl capitate, sub- to moniliform; papillae at top
of hydrocaulus, below line of demarcation *Euphysa* 3
2. Gonangia are cryptomedusae (elongate, fusiform bodies..... *Corymorpha palma*
2. Gonangia are quadrate eumedusoids with one tentacle longer.....*Corymorpha bigelowi*
2. Hydranth equal to or larger than hydrocaulus.....*Corymorpha sp A*
3. Oral whorl tentacles profuse, long, sub- to moniliform, capitate; quadrate eumedusoids with
4 equal tentacles *Euphysa sp B*
3. Oral tentacles 4-9, short and capitate; hydrocaulus tapering; hypostome short and blunt;
quadrate hydromedusa with 1 longer tentacle; about 1mm *Euphysa sp A*
- 3 Oral tentacles 3-7, short and capitate; hydrocaulus thin with uniform diameter; hypostome
ovoid; buds polyps not hydromedusae.....*Euphysa ruthae*

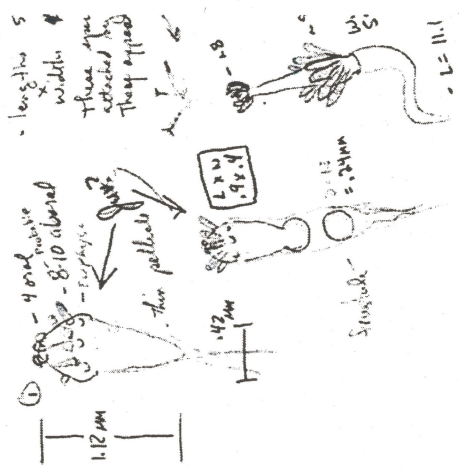


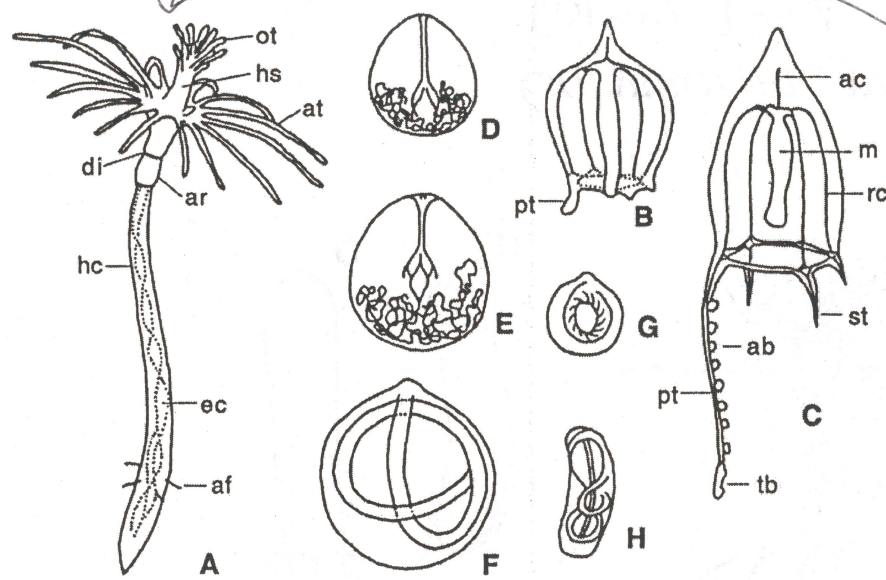
Euphysa sp A



Euphysa sp B

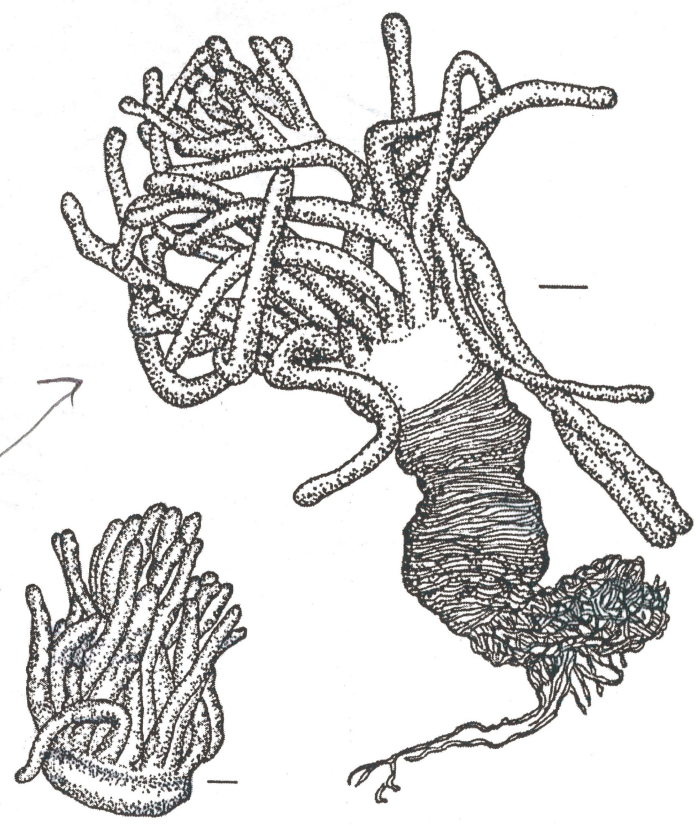
Euphysa sp C

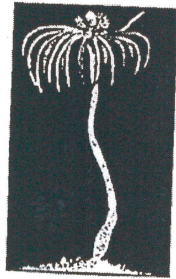




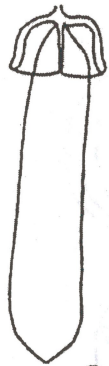
Corymorpha bigelowi
(Maas, 1905)

Corymorpha sp A
and actinula larva





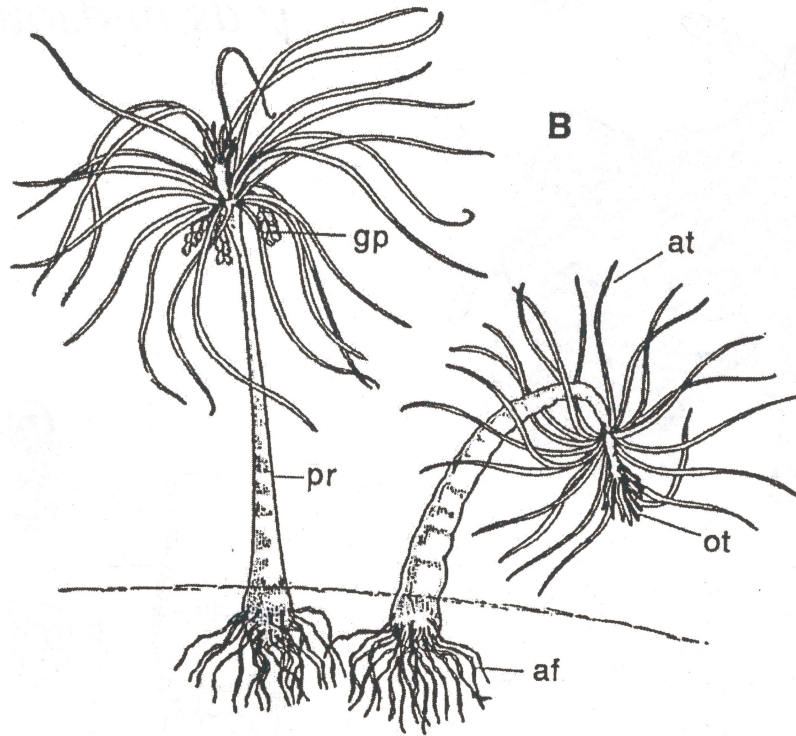
A



C



D



B

Corymorpha palma
Torrey, 1902

A KEY TO CORYMORPHINE POLYPS

1. Both whorls filiform to submoniliform, tips bulbous; papillae at base of hydrocaulus*Corymorpha 2*
1. Aboral whorl moniliform, capitate; oral whorl capitate, sub- to moniliform; papillae at top of hydrocaulus, below line of demarcation..... *Euphysa 3*
2. Gonangia are cryptomedusae (elongate, fusiform bodies) *Corymorpha palma*
2. Gonangia are quadrate eumedusoids with one tentacle longer...*Corymorpha bigelowi*
2. Very short hydrocaulus, equal to or shorter than hydranth....*Corymorpha sp. A*
3. Oral whorl tentacles profuse, long, sub- to moniliform, capitate; quadrate eumedusoids with 4 equal tentacles *Euphysa sp. B*
3. Oral tentacles 4-9. short and capitate; hydrocaulus tapering; hypostome short and blunt; about 1mm.....*Euphysa sp. A*
3. Oral tentacles 3-7. short and capitate; hydrocaulus thin with uniform diameter; hypostome ovoid.....*Euphysa ruthae*

CORYMORPHINES

- Brinckmann-Voss, A. 1970. Anthomedusae/ Athecatae (Hydrozoa, Cnidaria) of the Mediterranean. Part I. Capitata. Flora Fauna Golfo Napoli, 39: 1-36.
- Campbell, R.D. 1968. Holdfast movement in the hydroid *Corymorpha palma*: a mechanism of elongation. Biol. Bull. (Woods Hole), 134:26-34.
- Iwasa, M. 1934. Revision of *Stylactis* and its allied genera, with description of *Stylactella (Stylactis) yerii* n.sp. J. Fac. Hokkaido Univ. Ser. 6, Zool.; Vol. 2 no. 4, pp. 241-277.
- Kramp, P.L. 1949. Origin of the Family Corymorphidae. Vidensk. Medd. Dan. Naturhist. Foren., 107: 13-32.
- Miles, S.S. 1937. A new genus of hydroid and its method of asexual reproduction. Biol. Bull. (Woods Hole), 72: 327-333.
- Murbach, L. 1899. Hydroids from Woods Hole, Mass. *Hypolytus peregrinus*, a new unattached marine hydroid: *Corynitis Agassizii* and its medusa. Q.J. Microsc. Sci., 42: 341-360.
- Rees, W.J. 1937. On the systematic position of the hydroid genera *Hypolytus* Murbach, 1899 and *Dahlgrenella* Miles, 1937. Ann. Mag. Nat. Hist., 13: 102-106.
- Rees, W.J. 1957. Evolutionary trends in the classification of capitate hydroids and medusae. Bull. Br. Mus. N. Hist., Zoology, Vol. 4, no. 9, pp. 455-534.
- Naumov, D.V., 1969. Hydroids and Hydromedusae of the USSR. Israel Program for Scientific Translations, Jerusalem. 660 pp.
- Norenburg, J.L., and M.P. Morse. 1983. Systematic implications of *Euphysa ruthae* n.sp. (Athecata: Corymorphidae), a psammophilic solitary hydroid with unusual morphogenesis. Trans. Amer. Microsc. Soc., Vol. 102, no. 1, pp. 1-17.
- Petersen, K.W. 1990. Evolution and taxonomy in capitate hydroids and medusae (Cnidaria: Hydrozoa). Zool. J. Linn. Soc. Vol. 100. pp 101-231.
- Sassaman, Clay and J.T. Rees. 1978. The life cycle of *Corymorpha (=Euphysora) bigelowi* (Maas, 1905) and its significance in the systematics of Corymorphid hydromedusae. Biological Bulletin, Vol 154: 485-496.
- Torrey, H.B. 1907. Biological studies on *Corymorpha*. II. The development of *C. palma* from the egg. Univ. Cal. Publ. Zool., 3 (12): 253-298.