

OPHIUROIDS REPORTED FROM THE SCBPP SAMPLING AREA
(based on data in Maluf 1988)

- Family Asteronychidae
Asteronyx loveni Müller & Troschel, 1842
- Family Gorgonocephalidae
Gorgonocephalus eucnemis (Müller & Troschel, 1842)
- Family Ophiacanthidae
Ophiacantha diplasia H. L. Clark 1911*
Ophiacantha eurythyra H. L. Clark 1935
Ophiacantha phragma Ziesenhenné, 1940
Ophiacantha rhachophora H. L. Clark 1911
Ophiophthalmus normani (Lyman, 1879)
- Family Amphiuridae
Amphichondrius granulatus Nielsen, 1932*
Amphichondrius laevis Ziesenhenné, 1940
Amphiodia digitata Nielsen, 1932*
Amphiodia occidentalis (Lyman, 1860)*
Amphiodia psara H. L. Clark 1935*
Amphiodia sp A of Hendler
Amphiodia urtica (Lyman, 1860)*
Amphioplus hexacanthus H. L. Clark 1911*
Amphioplus strongyloplax (H. L. Clark, 1911)*
Amphioplus sp A MBC 1985*
Amphipholis platydisca Nielsen, 1932
Amphipholis pugetana (Lyman, 1860)*
Amphipholis puntarenae (Lütken, 1856)
Amphipholis squamata (Delle Chiaje, 1828)*
Amphiura arcystata H. L. Clark, 1911*
Amphiura carchara H. L. Clark, 1911
Amphiura diomedea Lütken & Mortensen, 1899*
Amphiura seminuda Lütken & Mortensen, 1899
Dougaloplus amphacanthus (McClendon, 1909)*
Dougaloplus sp 1 Pt. Loma 1992*
Ophiocnida hispida (Le Conte, 1851)
- Family Ophiactidae
Ophiactis savignyi (Müller & Troschel, 1842)()
Ophiactis simplex (Le Conte, 1851)()
Ophiopholis aculeata var. *kennerlyi* Lyman, 1860
Ophiopholis bakeri McClendon, 1909*
Ophiopholis longispina H. L. Clark, 1911
- Family Ophiotrichidae
Ophiothrix rudis Lyman, 1874
Ophiothrix spiculata Le Conte, 1851*
- Family Ophiocomidae
Ophiocoma alexandri Lyman, 1860
Ophiopsila californica A. H. Clark, 1921*
Ophiopteris papillosa (Lyman, 1875)

Family Ophioneridae

Ophionereis amphilogus (Ziesenhene, 1940)

Ophionereis annulata (Le Conte, 1851)*

Ophionereis eurybrachiplax H. L. Clark, 1911*

Family Ophiidermatidae

Ophiocryptus maculosus H. L. Clark, 1915

Ophioderma panamense Lütken, 1859

Ophioderma teres (Lyman, 1860)

Ophioderma variegatum Lütken, 1856

Ophioncus granulatus Ives, 1889

Ophiuroconis bispinosa Ziesenhene, 1937*

Family Ophiuridae

Amphiophiura superba (Lütken & Mortensen, 1899)

Ophiomusium jolliensis McClendon, 1909*

Ophiomusium lymani Thomson, 1873

Ophioplocus esmarki Lyman, 1874

Ophiura flagellata (Lyman, 1878)

Ophiura kofoidi McClendon, 1909

Ophiura leptoctenia H. L. Clark, 1911*

Ophiura luetkeni (Lyman, 1860)*

Ophiura sarsi Lütken, 1855

Stegophiura ponderosa (Lyman, 1878)

* = on the SCAMIT list

@ = Kyte (1982) suggests this properly belongs in *Ophiophthalmus*

() = genus on the SCAMIT list

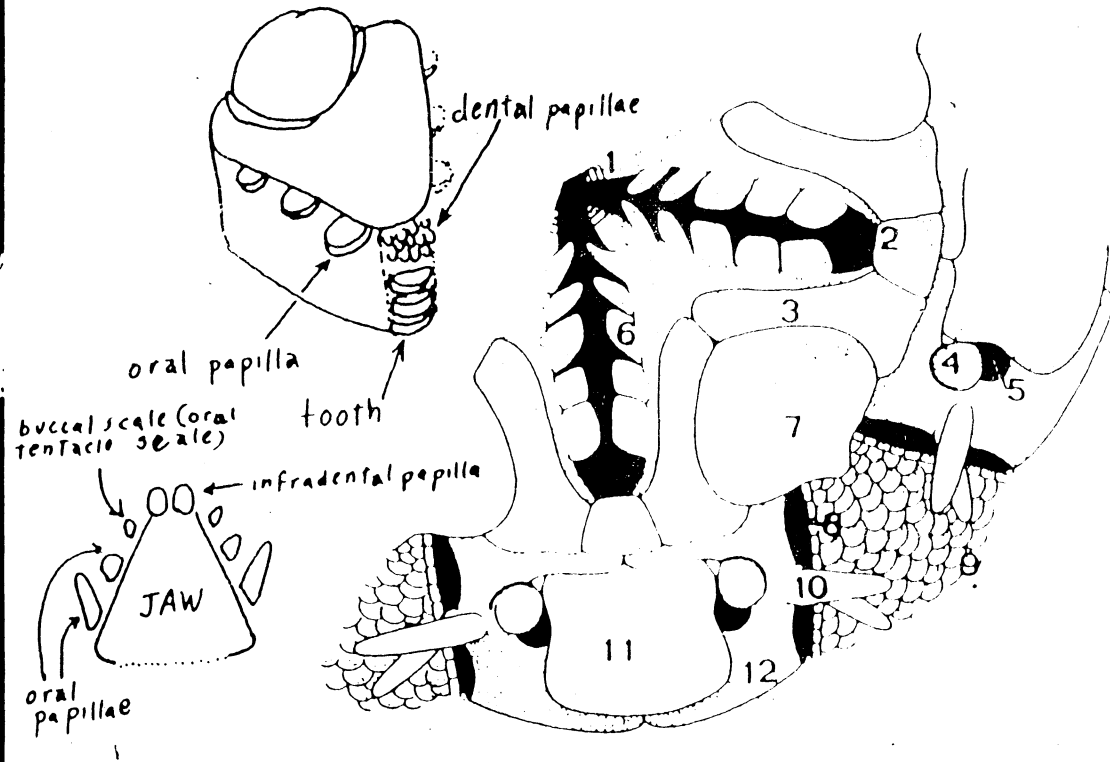
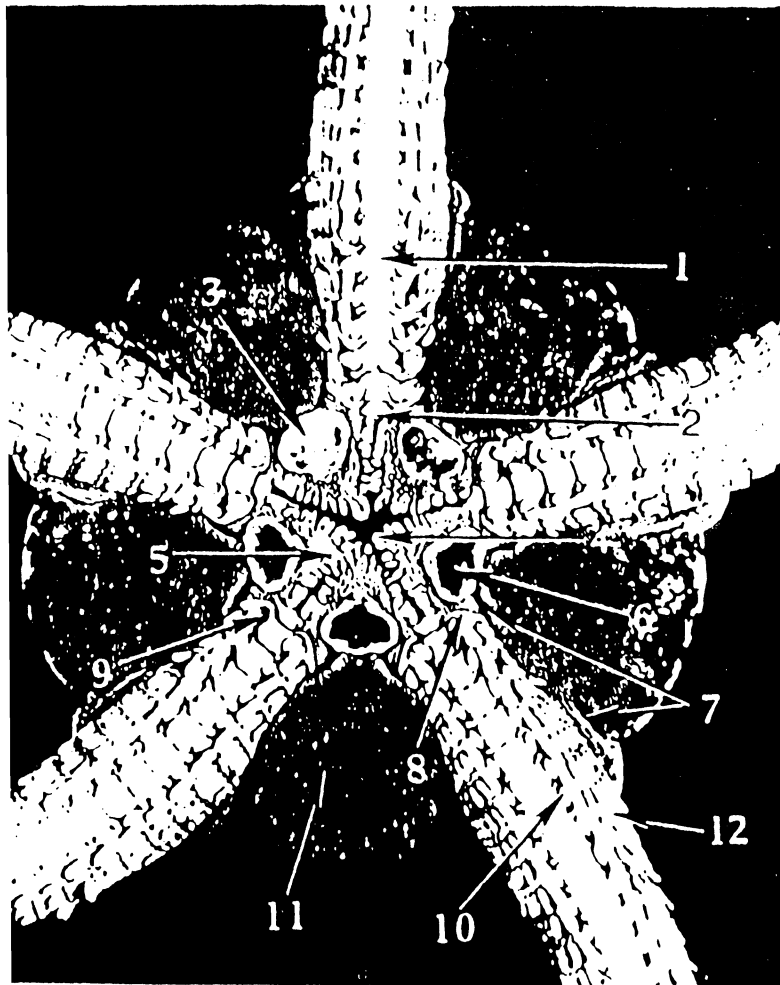


Figure 2. Two-fifths of oral aspect of a diagrammatic disc to show diagnostic parts

1. *Ophioderma panamense*. diagnostic parts

1. ventral arm plate

2. angle of mouth

3. adoral plate

4. tentacle scale

5. tentacular pit

6. oral papilla

7. genital slit

8. side arm plate

9. tentacle pore

10. tentacle scale

11. interbrachial area of disc

7. oral shield

8. genital slit

9. interradial portion of disc

10. arm spine

11. 1st oral arm plate

12. side arm plate

1. teeth

2. angle of mouth

3. adoral plate

4. tentacle scale

5. tentacular pit

6. oral papilla

7. oral shield

8. genital slit

9. interradial portion of disc

10. arm spine

11. 1st oral arm plate

12. side arm plate