

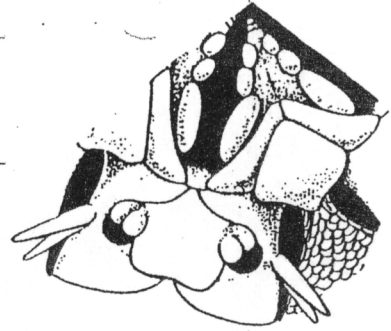
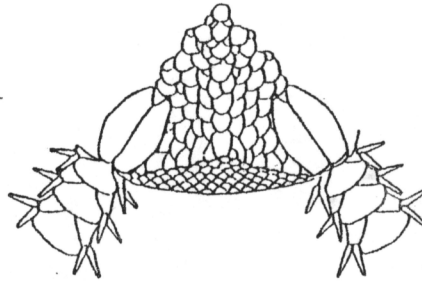
* This one has spatulate tentacle spines in the center & no cushion between upper arm plates

CLASS OPHIUROIDEA

Order Ophiurida

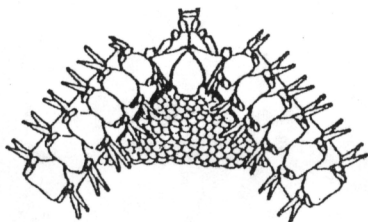
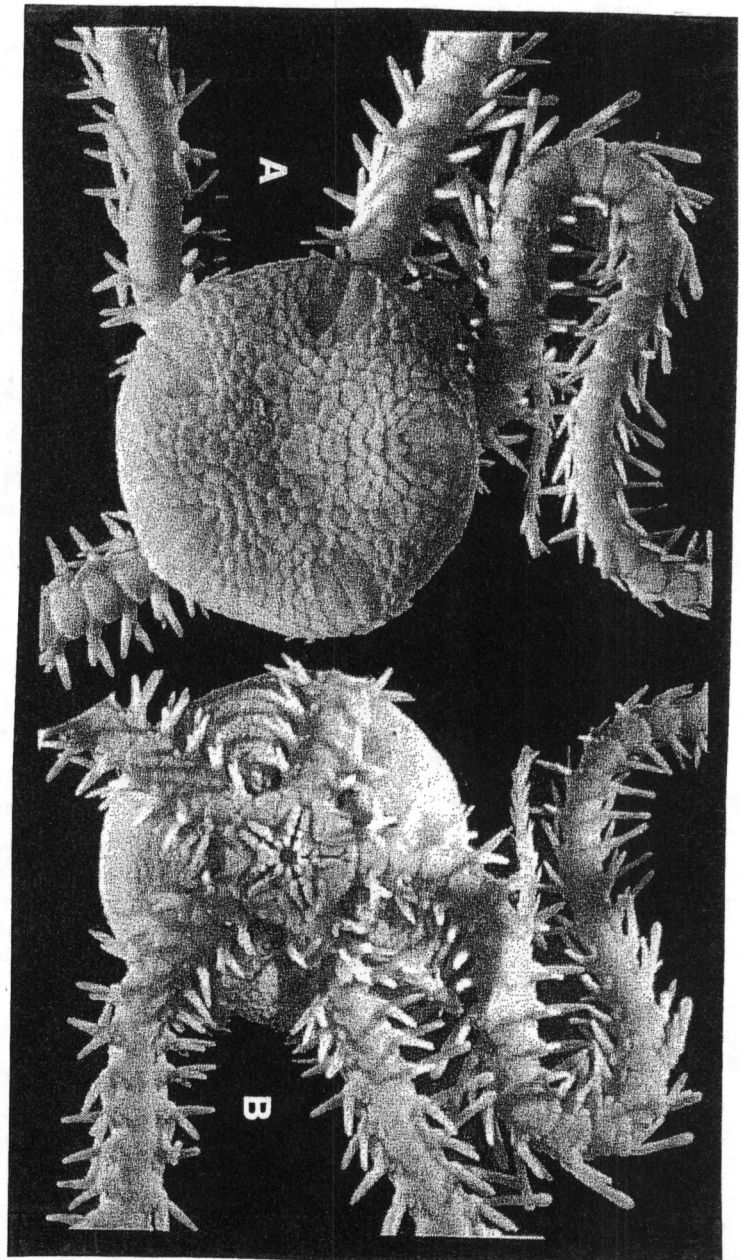
Family Amphiuridae

Amphipholis pugetana



General Description:

Character	<i>Amphipholis pugetana</i>
Pattern of Aboral Disk	Lrg.S./Rosette inflated disc
Radial Shield Pattern	Split Heart
Pattern of Oral Disk	Sm. Scales
Hyaline Forks	No
Arm Insertion to Disk	Underneath
Number of Oral Papillae	3
Arrangement of Papillae	D= lrg, wide, flat M tubular
Infradental Papillae	2sm. Block-like
Oral Shield Pattern	Sm. Triangle
Adoral Shield Spine	No
Tooth Pattern	Wedge shaped
Number of Tentacle Spines	3 to 4
Pattern of Tentacle Spines	Equal
Number of Tentacle Scales	2 med flaps
Pattern of Dorsal Tentacle	Oblong Oval
Pattern of Ventral Tentacle	Teardrop
Cushion btwn Tentacle Plates	Slightly
Color of Animal Preserved	cream



Three oral papillae on each side of jaw
3rd one long & broad

scaled disk