



CITY OF SAN DIEGO VOUCHER SHEET

Species: Microta ? alaskensis
 Authority: COE 1901
 Common Synonyms:
Lineus bilineata
Cerebratulus californiensis

Taxon: NEMERTEA: Heteronemertea
 Date: 10/28/94
 By: DEAN PASKO
 Voucher Specimen(s):

Station	Date	Storage Location	Voucher#
A-1361	7-11-94	Voucher Coll	X-94

Characters: [used in lab to confirm ID]

Color - a light yellow-brown, "rosy brown" (maybe with an orangish tinge).

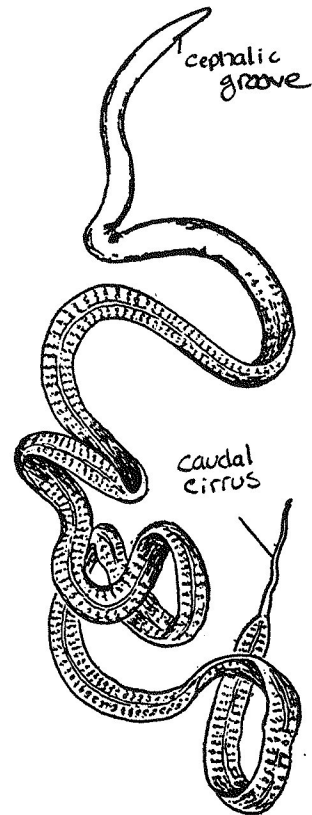
Elongate nemertean with long cephalic groove (Lineus-like) and caudal cirrus.

Lateral margins rounded - NOT flattened and ribbon-like as in Cerebratulus.

Body SOFT + Fleshy.

Eyes absent - even when cleared.

Illustration: [cite source(s)]



FROM HYMAN, 1951. THE INVERTEBRATES

Full Description: [cite source(s)]

A fairly large species, body long and slender, rounded in esophageal region, somewhat flattened in intestinal region, caudal cirrus well developed, but often broken. Head slender, with long shallow cephalic furrow; ocelli absent... when preserved this species superficially resembles Cerebratulus. However, the posterior intestinal region, although flattened, does NOT have the sharp edged typical of Cerebratulus.

BLAKE, 1993. MMS ATLAS VOL 1.

Related Species: [include character differences]

Comments: NOTE: Though the caudal cirrus of this species (as well as others w/ caudal cirri) may be broken off, a pore marking the point of the cirrus insertion is usually still evident.

References: COE, W.R. 1940. REVISION OF THE NEMERTEAN FAUNA OF THE PACIFIC COASTS OF NORTH CENTRAL, AND SOUTH AMERICA. ALAN. HANCOCK PAC. EXP. VOL 2 (13).

Species: *Micrura ?alaskensis*

Taxon: Nemerita

Date: 10/28/94

Additional Illustrations: [cite source(s)]

REF. CONTINUED:

Blake, J.A. 1993. Phylum Nemerita. IN. TAXONOMIC ATLAS OF THE BENTHIC FAUNA OF THE SANTA MARIA BASIN AND WESTERN SANTA BARBARA CHANNEL. Vol 1: Introduction, Benthic Ecology, Oceanography, Platyhelminthes, and Nemerita: pp 95-130.

Distribution:

Pt. Loma: [station/date] A-13①, 7-11-94, 164 ft.

Geographic: [cite source(s)] Alaska, British Columbia, Puget Sound. TO Southern California and Ensenada, Mexico.

Habitat: common in many localities: Beneath stones, in crevices of rocks, in sand and sandy mud.