

Amphiporus imparispinosus Griffin 1898

SCAMIT Vol. , No

Group: Nemertea: Enopla: Hoplonemertea: Amphiporidae

Date Examined: 22 June 2011
Voucher By: Tony Phillips

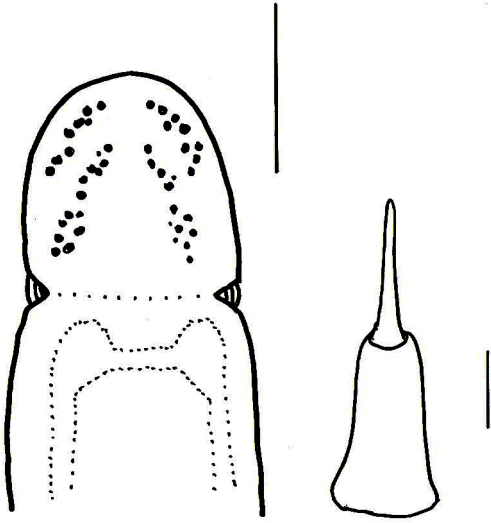
SYNONYMY: None

LITERATURE:

- Bernhardt, P. 1979. A key to the Nemertea from the intertidal zone of the coast of California. (Unpublished)
- Coe, W.R. 1905. Nemerteans of the west and northwest coasts of America. Bull. Museum Comparative Zool. Harvard. 47: 1-319, pl. 1-25.
- Coe, W.R. 1940. Revision of the nemertean fauna of the Pacific coasts of North, Central and northern South America. Allan Hancock Pacific Expeditions. 2: 247-323.
- Coe, W.R. 1944. Geographical distribution of the nemerteans of the Pacific coast of North America, with descriptions of two new species. Jour of the Washington Academy of Sciences, 34:27-32.
- Correa, D.D. 1964. Nemerteans from California and Oregon. Proc. Calif. Acad. Sci. 31:515-558.
- Crandall, F.B. & J.L. Norenburg. 2001. Checklist of the Nemertean Fauna of the United States. Nemertes (<http://nemertes.si.edu>). Smithsonian Institution, Washington, D.D. pp. 1-36.
- Crandall, F.B. et al. 2002. Checklist of the Nemertean Fauna of Japan and Northeastern Asia. Nemertes (<http://nemertes.si.edu>). Smithsonian Institution, Washington, D.D. pp. 1-44.
- Gibson, R. & F.B Crandall. 1989. The genus Amphiporus Ehrenberg (Nemertea, Enopla, Monostyliferoidea). Zoological Scripta, 18: 453-470.
- Iwata, F. 2008. On Three Monostyliferous Hoplonemerteans from the San Juan Archipelago, Washington State, USA. Publ. Seto Mar. Biol. Lab., 40(5/6):9-45.
- Kajihara, H. 2007. A Taxonomic Catalogue of Japanese Nemerteans (Phylum Nemertea). Zoological Science, 24: 287-326.
- Roe, P., J.L. Norenburg and S. Maslakova. 2007. Nemertea. In The Light and Smith Manual. Intertidal Invertebrates from Central California to Oregon. Pp. 221-233.

DIAGNOSTIC CHARACTERS:

1. Body yellowish-white to crème white, generally of uniform width; color in life light brown to pale reddish-yellow (Iwata, 2008)
2. Proboscis sheath extends almost full length of body, proboscis papillated.
3. Basis 1.25 – 2X length of stylet (s/b ratio 0.5 – 0.83), basis pear to bell shaped, with rounded base; no accessory sacs observed in any of the specimens cleared (three noted in Iwata 2008).
4. Eyes not visible unless cleared; cleared specimens with four groups of eyes on each side of head. First two groups are found along the anterior edge of the head with 6 – 12 eyes, inside and posterior of these two groups of anterior eyes, in the form of an upside down “V” or irregularly scattered in two parallel lines, are 10 – 20 eyes per group.
5. Size of specimens observed: 4 – 10 mm.



RELATED SPECIES AND CHARACTER DIFFERENCES:

Unless cleared there are a many species of Amphiporus, Tetrastemma and provisional species of Hoplonemertea that have a similar appearance. Upon being cleared there is no other species in the SCB with a similar eye pattern.

DEPTH RANGE: Intertidal – 45 meters

DISTRIBUTION: Alaska to San Diego; Bering Sea, Commander Islands to Japan