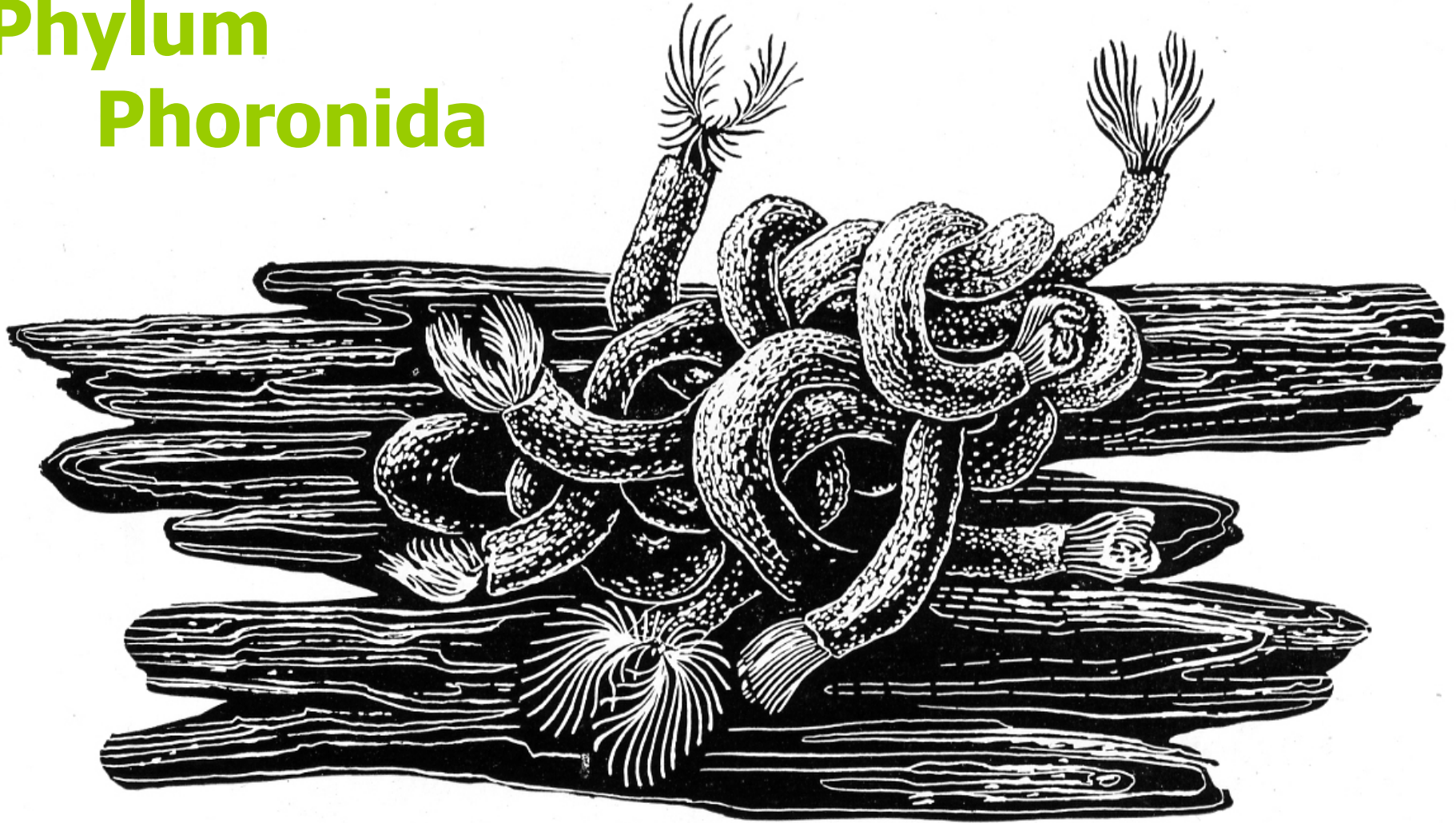


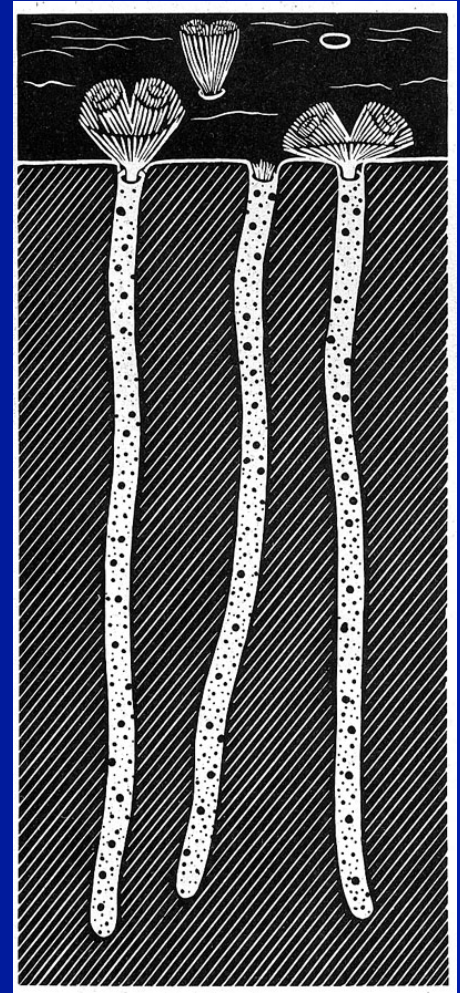
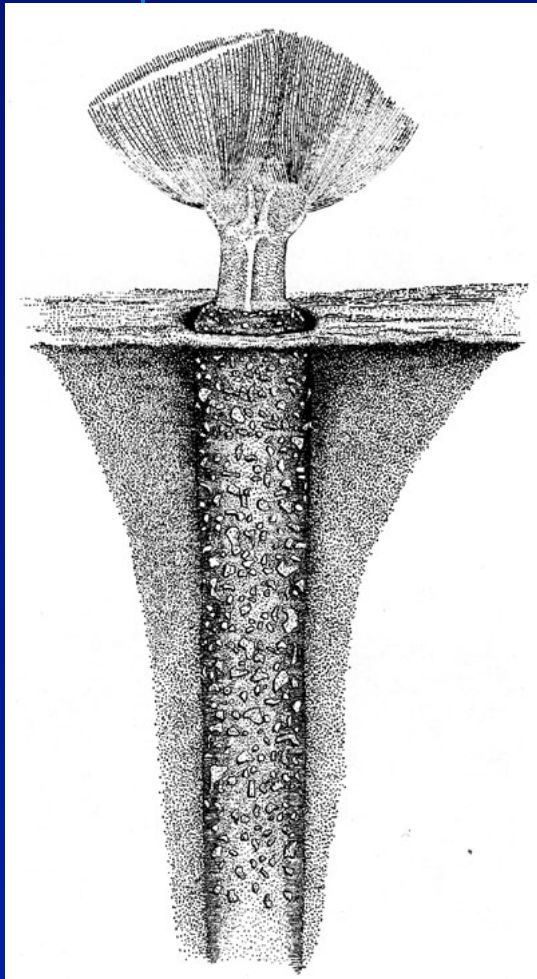
# Phylum Phoronida

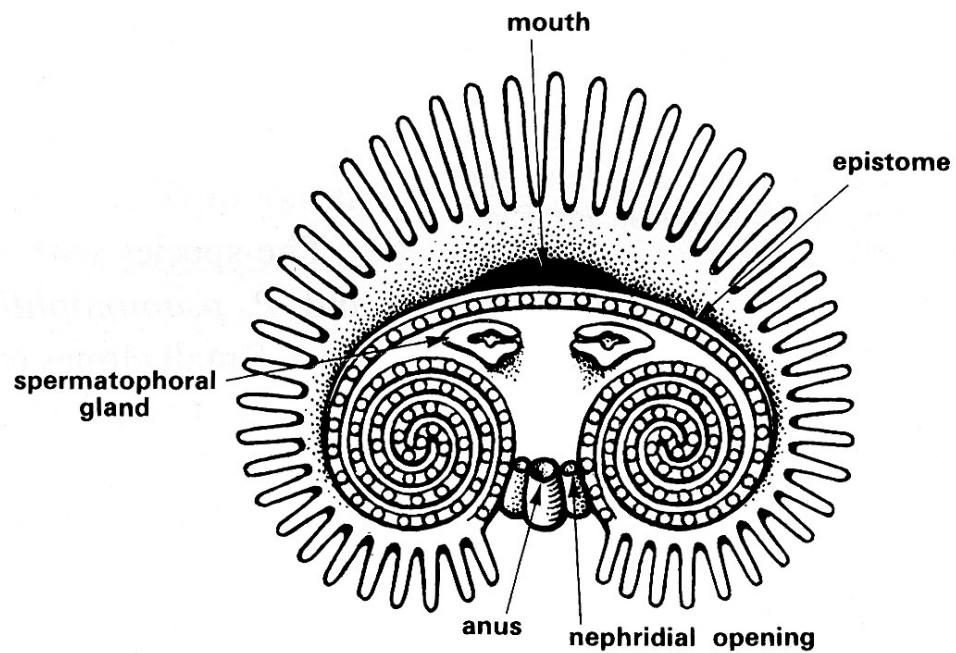
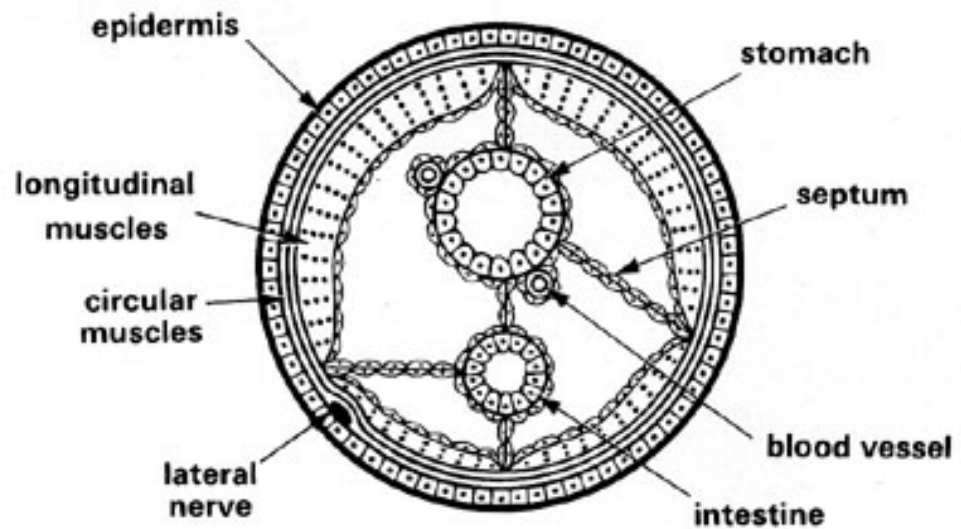
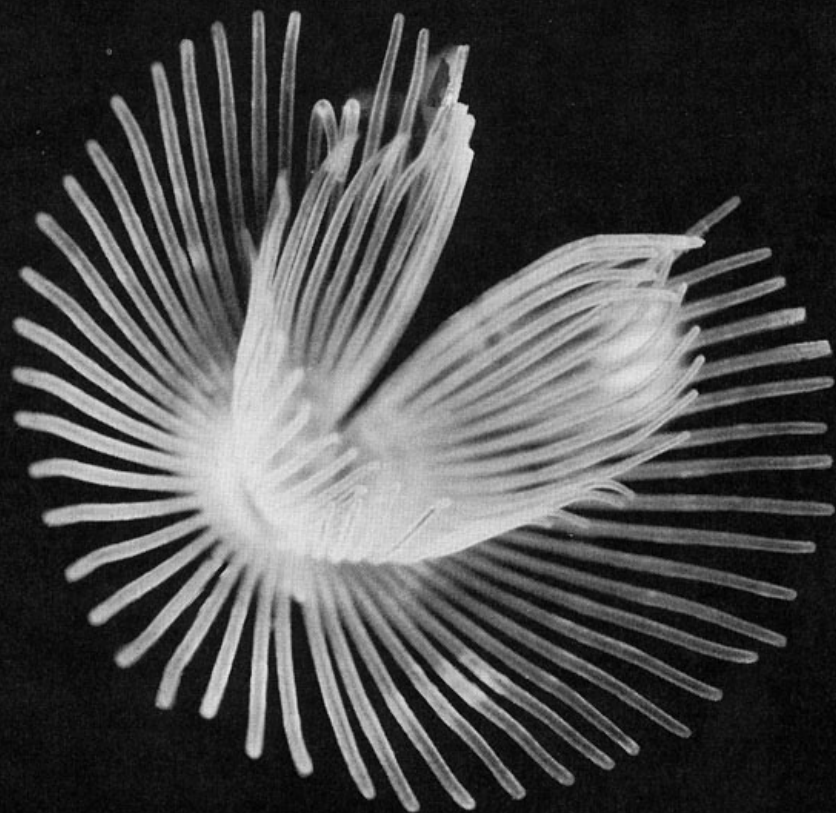


# PHYLUM PHORONIDA







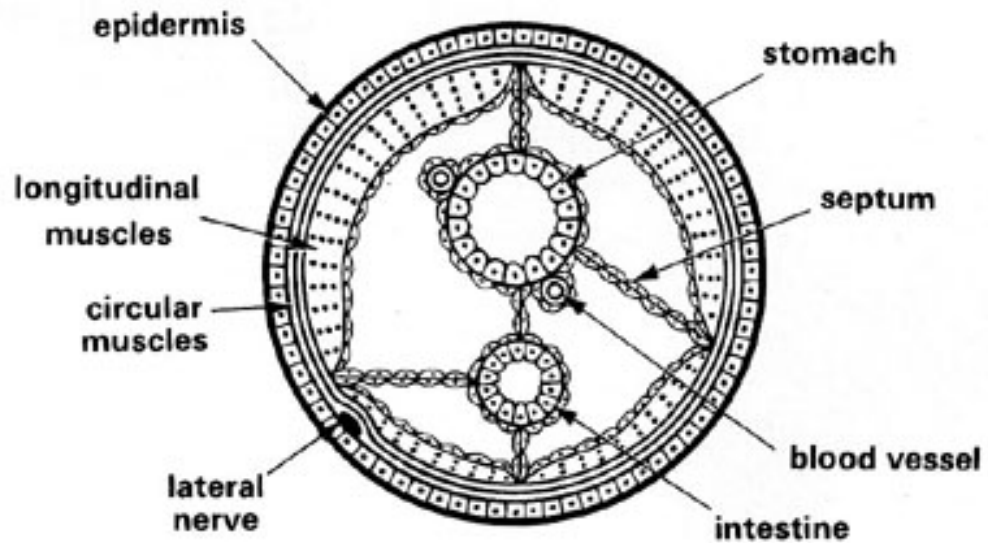
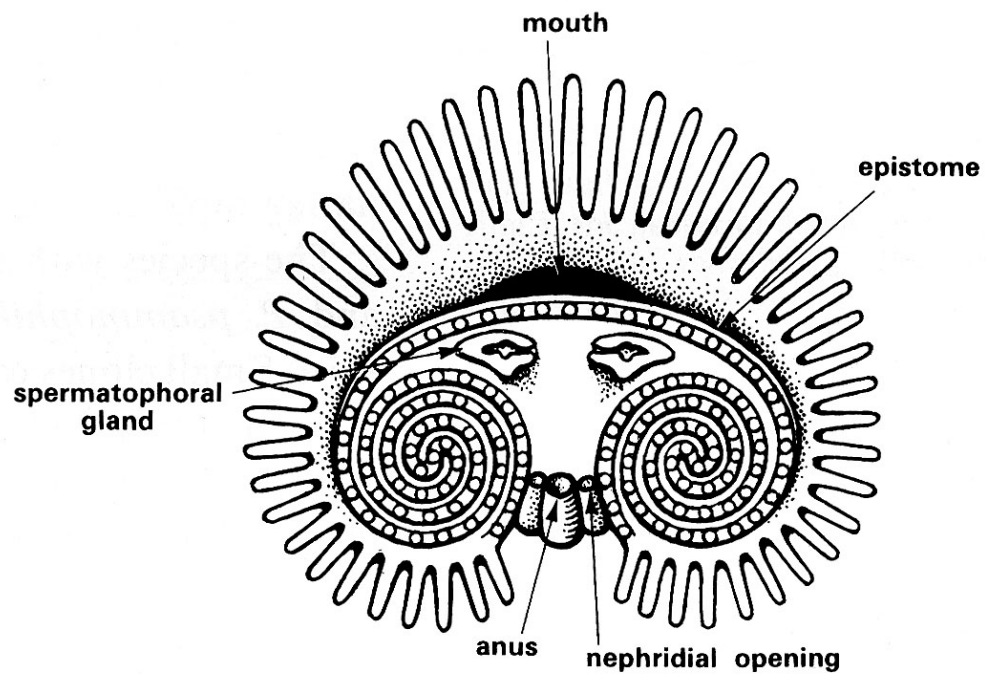
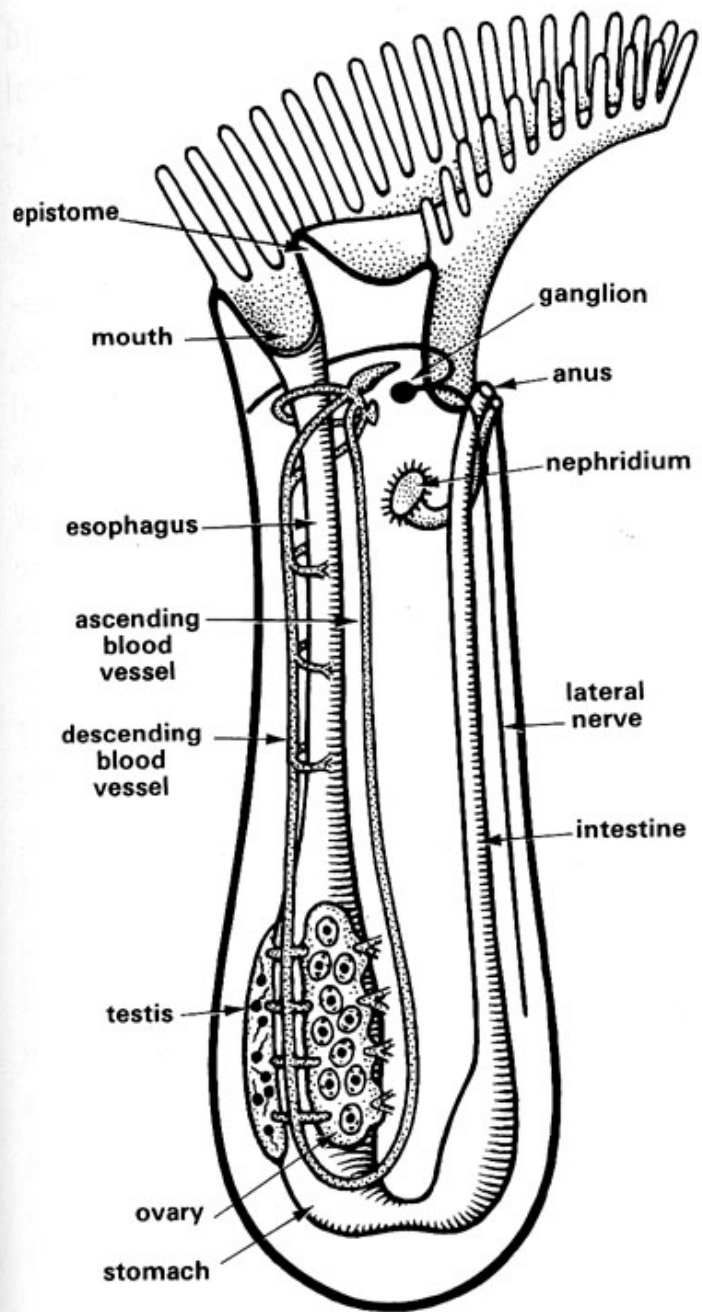






*Phoronopsis californica*

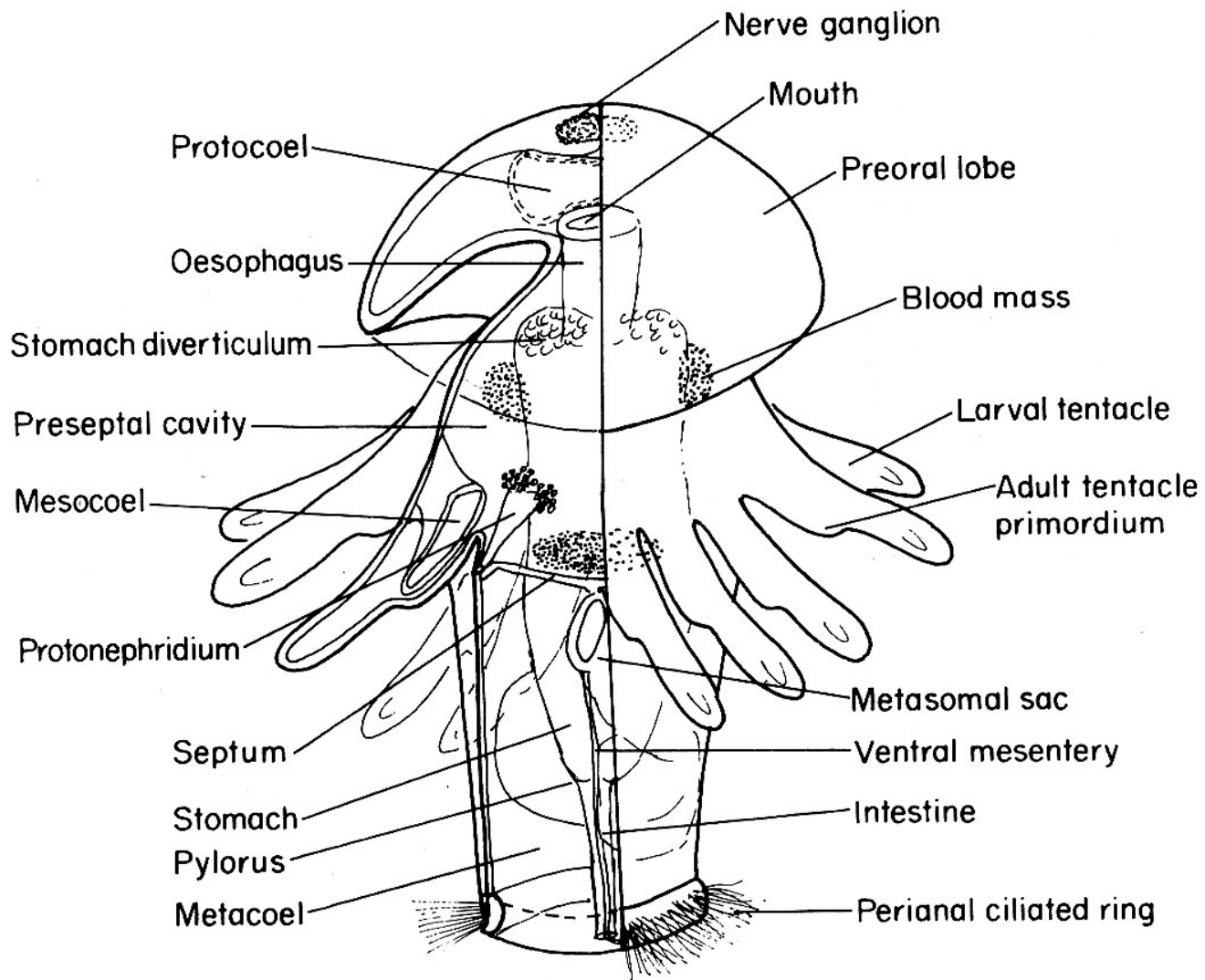




*Phoronopsis  
californica*







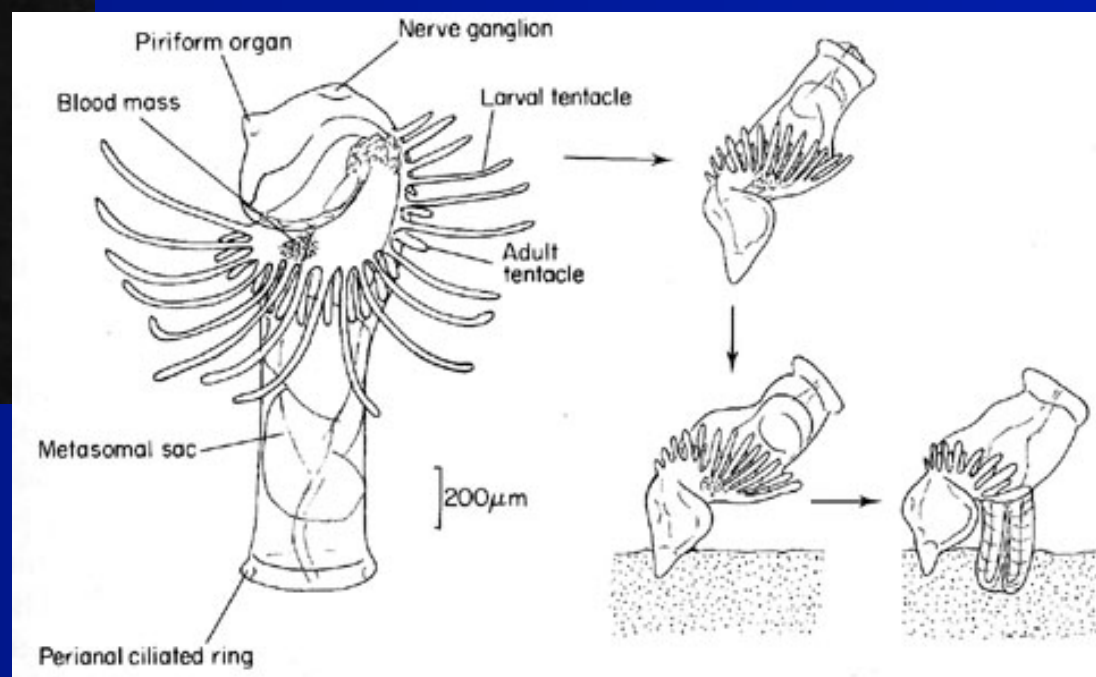


# A Guide to Marine Coastal Plankton and Marine Invertebrate Larvae

DEBOYD L. SMITH



# Actinotroch larvae and settlement



# California species of *Phoronopsis*

Species Characters	<i>californica</i>	<i>harmeri</i> = <i>viridis</i>
Habitat	fine sand & mud	same
Depth distribution	intertidal to 35 m	intertidal to 90 m
Body size (length)	8 cm	10 cm
Color	bright orange/tangerine, peach, red	white/pink, light green
Lophophore shape	complex double helix with 4-9 coils per side	same
Lophophoral organs	large, membranous	same
Tentacle color	flecked w/ white	same
Tentacle number	1500+	100-400
Tentacle length	2-2.5 mm	0.6-4.0 mm
Body wall muscles (mean)	$\frac{66}{44} \frac{66}{35} = 211$	$\frac{23}{14} \frac{23}{12} = 72$
Nidamental glands	absent	same
Spermatophoral glands	large, membranous lips	same
Sexes	separate	same
Eggs	freely spawned	same
Larva	unknown	Actinotrocha sp. A



***Phoronis  
vancouverensis***

