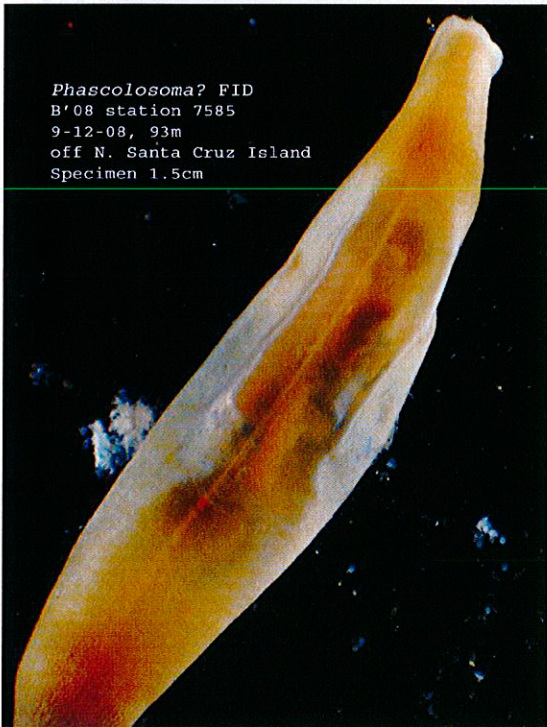
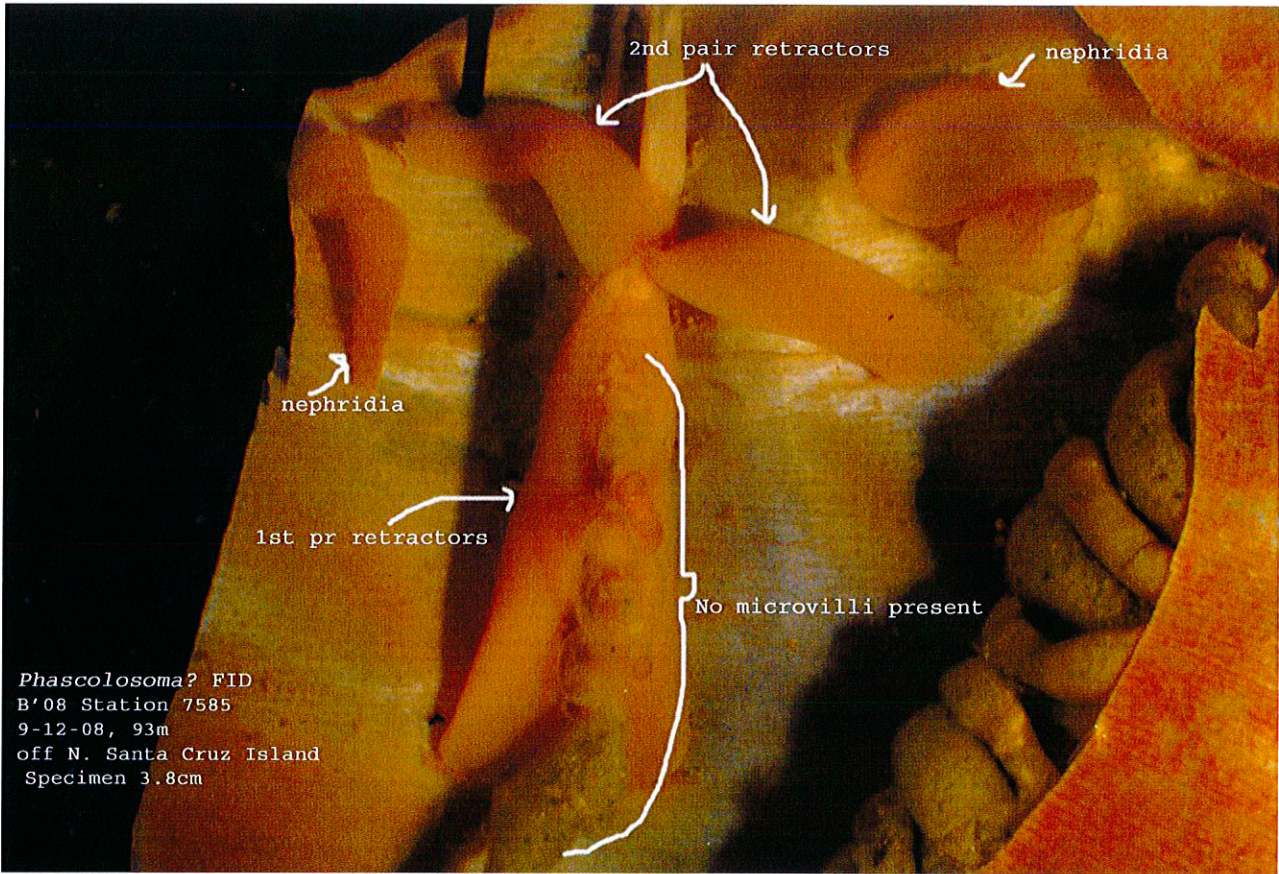


Phascolosoma? FID



Taxonomic Characters: 2 large, thick, pairs of retractor muscles which originate mid-way up the trunk. Contractile vessel lacks microvilli. 2 simple nephridia. I am unable at this time to describe the tentacles or hooks as I'm having a hard time finding either. There are 3 specimens in the sample and the animals appear to still have their introverts intact, but upon dissection I am not finding hooks and only finding thick/ruffled tissue in the area where I am looking for tentacles. Due to the fact that most of the keys in Cutler 94, rely on hooks and tentacles, I am at a loss. Introvert is shorter than the trunk (1/3-1/2?). Body wall *appears* to have longitudinal muscle bands, but I am a bit unsure of this character. There are small, scattered hooks over the surface of the trunk. They are difficult to find in the largest specimen (3.8cm) as the thickness of the skin almost precludes them.

I am basing my identification of *Phascolosoma* on the nature of the retractor muscles, the lack of microvilli, the pair of unilobed nephridia, the longitudinal muscle bands in the body wall (?), and in part, on the apparent lack of hooks on the introvert.