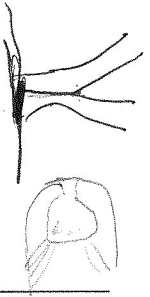




CITY OF SAN DIEGO VOUCHER SHEET



Species: *Siphonosoma ingens*

Authority: (Fisher, 1947)

Common Synonyms:

Siphonomecus ingens Fisher 1947

Siphonosoma (Siphonsoma) ingens Fisher 1952

Taxon: Sipunculida: Sipunculidae

Date: November 15, 1995

By: Elizabeth McNamara

Voucher Specimen(s):

Station	Date	Storage Location	Voucher#
A-5	7/7/92	Main	X-81
B-1	10/7/93	Main	X-81

Characters:

1. 4 introvert retractor muscles, dorsal pair originates anterior to ventral pair
2. 2 simple or branched nephridia, free & open in front of anus
3. Hooks absent on introvert
4. Trunk diameter larger than other species
5. Longitudinal musculature of body wall is thickened to form well-defined bands, visible through transparent body wall (see Fig. 4).

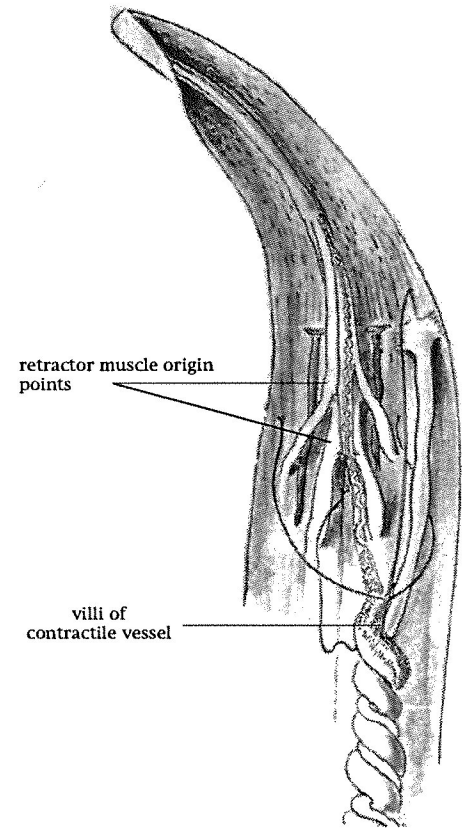
Full Description: (Fisher, 1947)

Contractile vessels contain numerous villi. Tentacles have 12 double meridional rows separated by 12 grooves. Scale-like secretory papillae on introvert. Fusiform bodies in cluster of 5; tubular shaped at posterior end. Transparent body wall. Introvert shorter than trunk.

Illustration: (Fisher, 1947)

*Fig. 1

Internal anatomy of introvert & trunk (dorsal view)



*see additional illustrations on p. 2

Related Species:

Similar to Japanese *S. mourense* except for presence of 2-4 fusiform bodies, rather than 5.

Comments:

Longitudinal muscle bands are most visible with light shining through the base of specimen.

References:

- Cutler, Edward Bayler. The Sipuncula: their systematics, biology and evolution. Ithaca: Comstock Publishing Associates, 1994.
- Stephen, A.C. & S.J. Edmonds. The Phyla Sipuncula and Echiura. London: The British Museum (Natural History), 1972.

(over)

Species: *Siphonosoma ingens*

Taxon: Sipunculida: Sipunculidae

Date: November 15, 1995

Additional Illustrations: (Fisher, 1947)

Fig. 2

Head of a small specimen (Monterey Bay, CA)

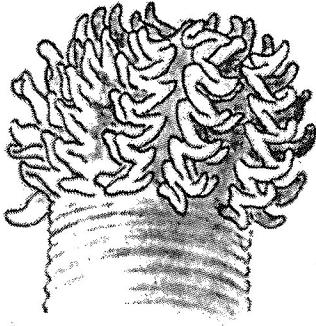


Fig. 3

Portion of Fig. 1 enlarged

CP, coelomic papillae; CV, dorsal contractile vessel; N, nephridium; NC, nerve cord; O, esophagus; RD, dorsal retractor muscle; RV, ventral retractors.

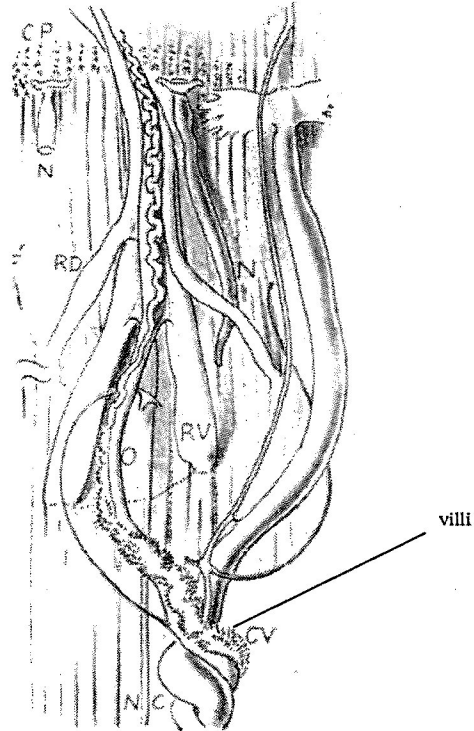
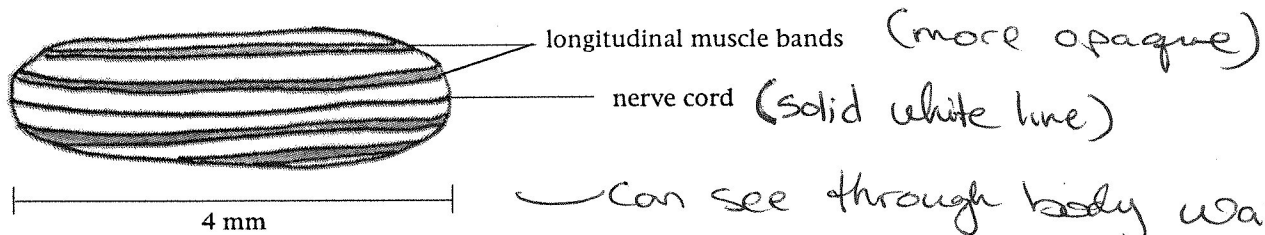


Fig. 4

Outer body wall musculature of *S. ingens*; half body width with 4 muscle bands shown.



Distribution— (Cutler, 1994)

Pt. Loma: 200 ft.

Geographic: California

Habitat: intertidal to subtidal, sand to sandy mud