

Ischyrocerus angvipes

Diagnostic Characters:

Outer ramus of U3 immersed spine, if present, never hooked; distolateral margin of ramus with 0-7 perpendicular, small blunt denticles

Coxa 5 much longer than 6

Coxa 1, $\frac{3}{4}$ as long as coxa 2

Accessory flagellum multi-segmented and elongate

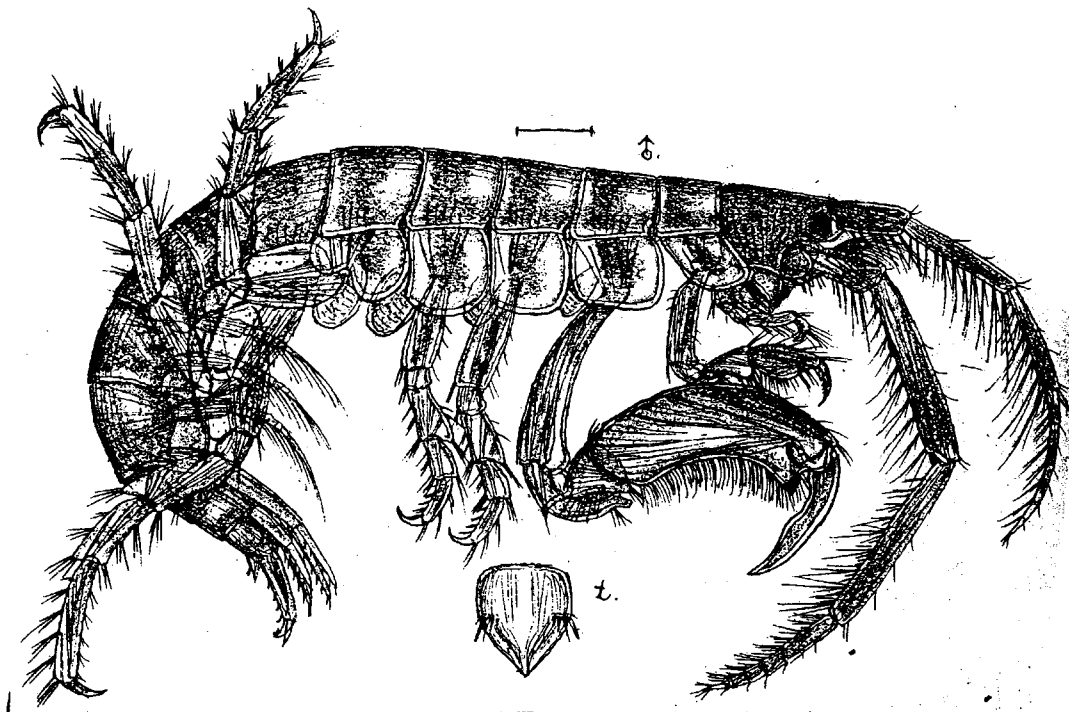
Article 5 of G1 as long as or shorter than article 6

Article 2 of Pereopod 5-7 subovate or broadly rectangular

U3 with 2 fully developed rami

Male G2 with elongate propodus, dacyl very long, not chelate

Illustration:



G.O.Sars autoogr. *Ischyrocerus angvipes*, Kröyer.